

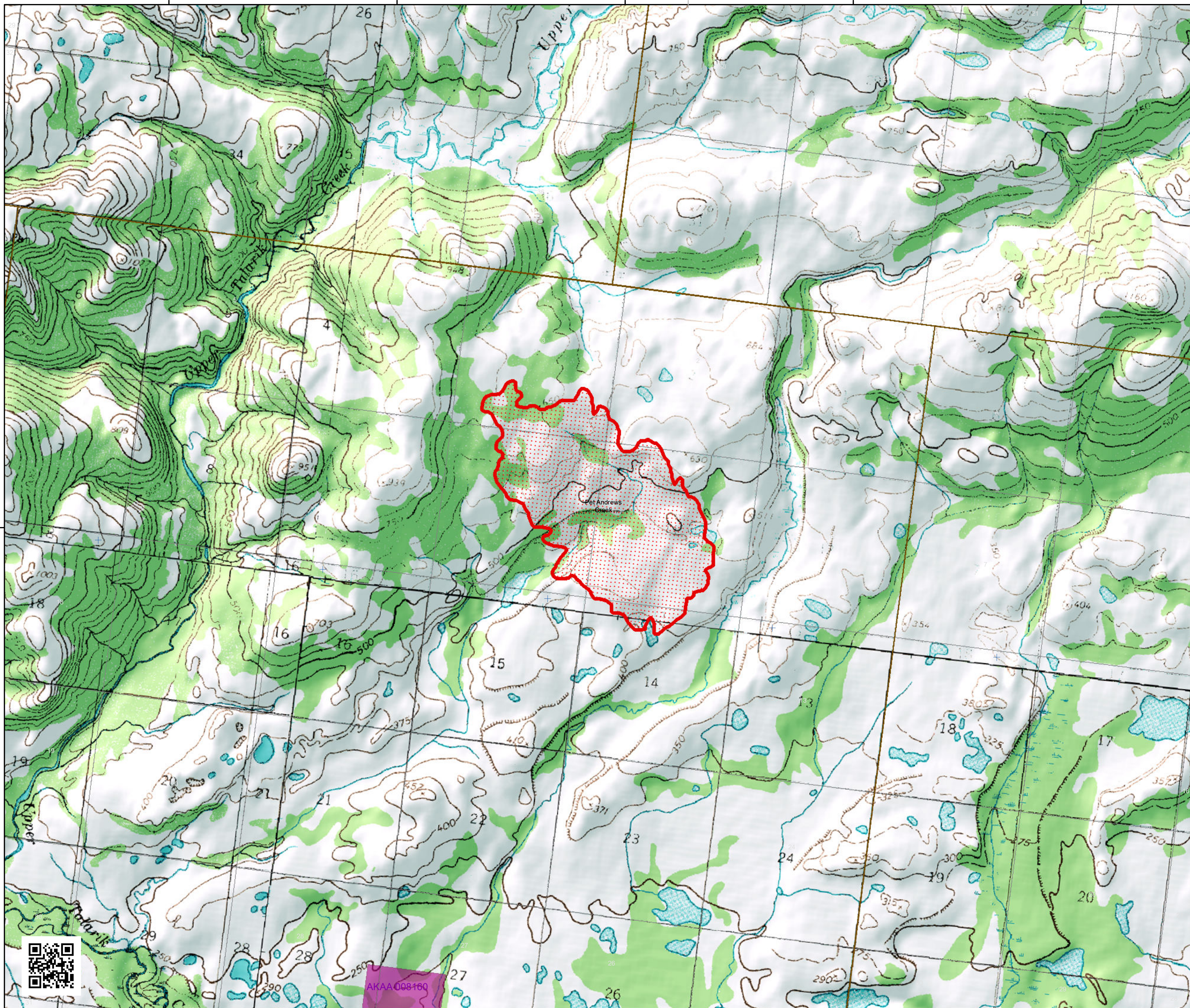
155°17'30"W

155°15'0"W

155°12'30"W

155°10'0"W

155°7'30"W

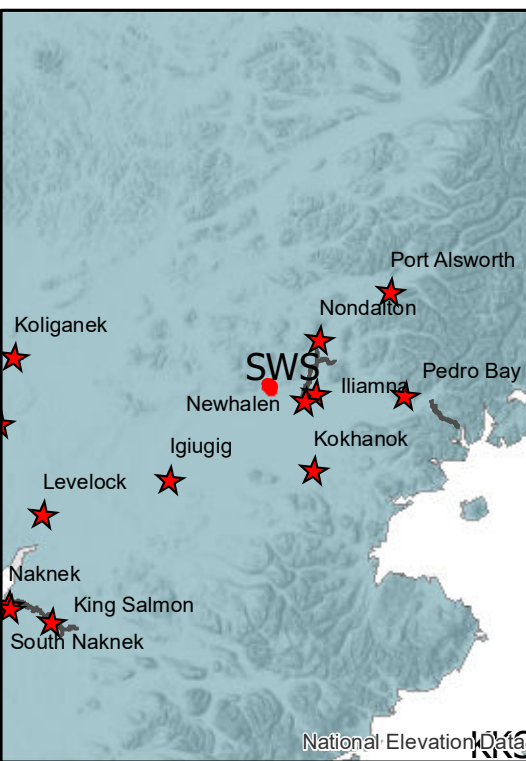


**Pet Andrews Creek  
Operations Map**  
835 ac. as of  
7/10/2019



Printed:  
7/13/2019 @ 18:39

-  Fire Perimeter
-  Allotment Boundary



Alaska Albers Projection  
NAD 83 Datum  
GISS: NWIMT12

0 0.125 0.25 0.5  
Miles

59°45'0"N

59°45'0"N

155°17'30"W

155°15'0"W

155°12'30"W

155°10'0"W

155°7'30"W

155°5'0"W