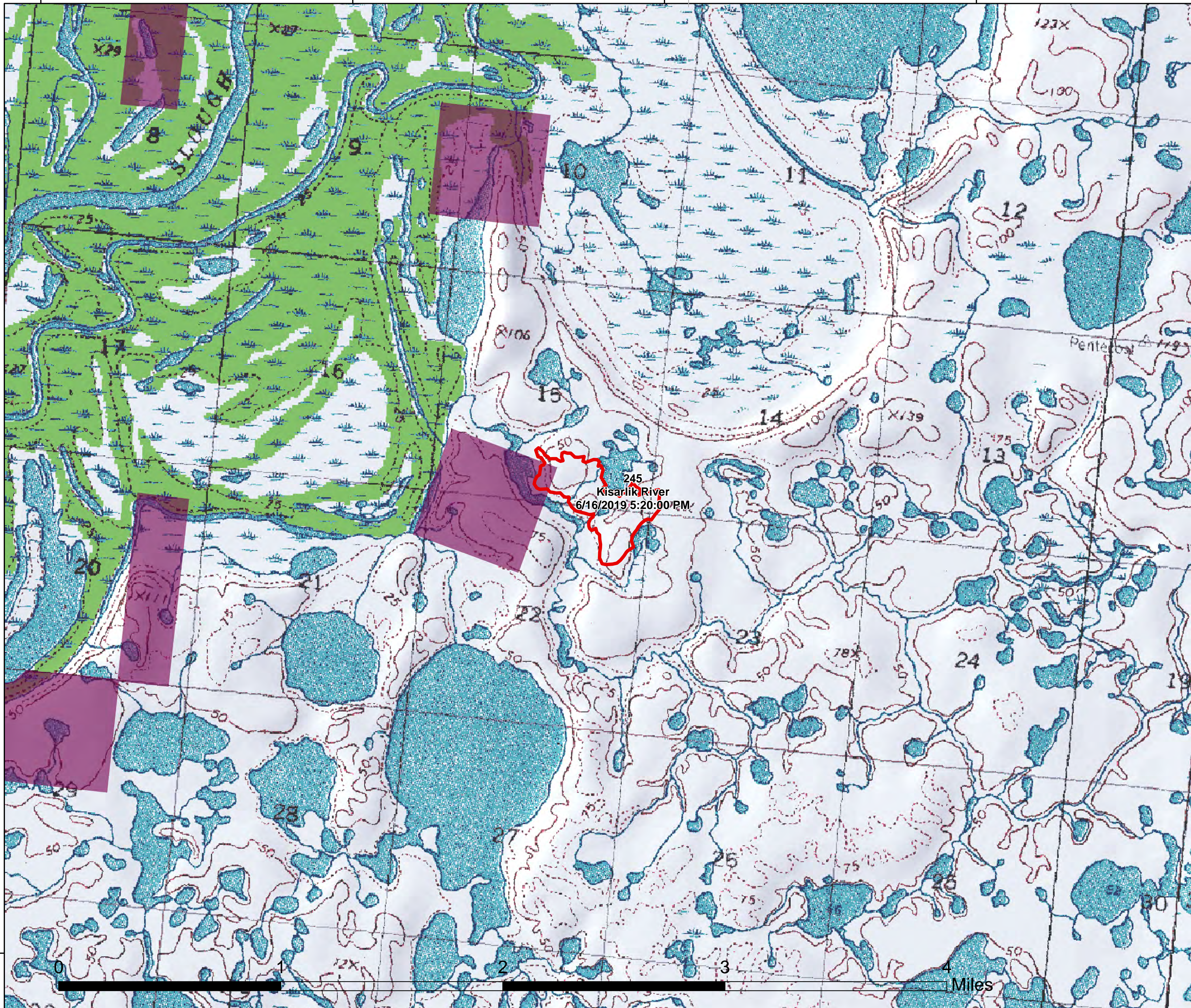


161°2'30"W

161°0'0"W

160°57'30"W



160°55'0"W



245
 Kisarlik River
 Approx. Acres: 79
 Mapped
 6/16/2019 5:20:00 PM



Printed 7/20/2019 @ 13:01

-  Fire Perimeter
-  Allotment Boundary



Alaska Albers Projection
 NAD 83 Datum
 GISS: Grupe



<https://qr.go.page.link/vsqfP>

161°0'0"W

160°57'30"W

160°55'0"W

160°52'30"W

60°55'0"N