

156°2'30"W

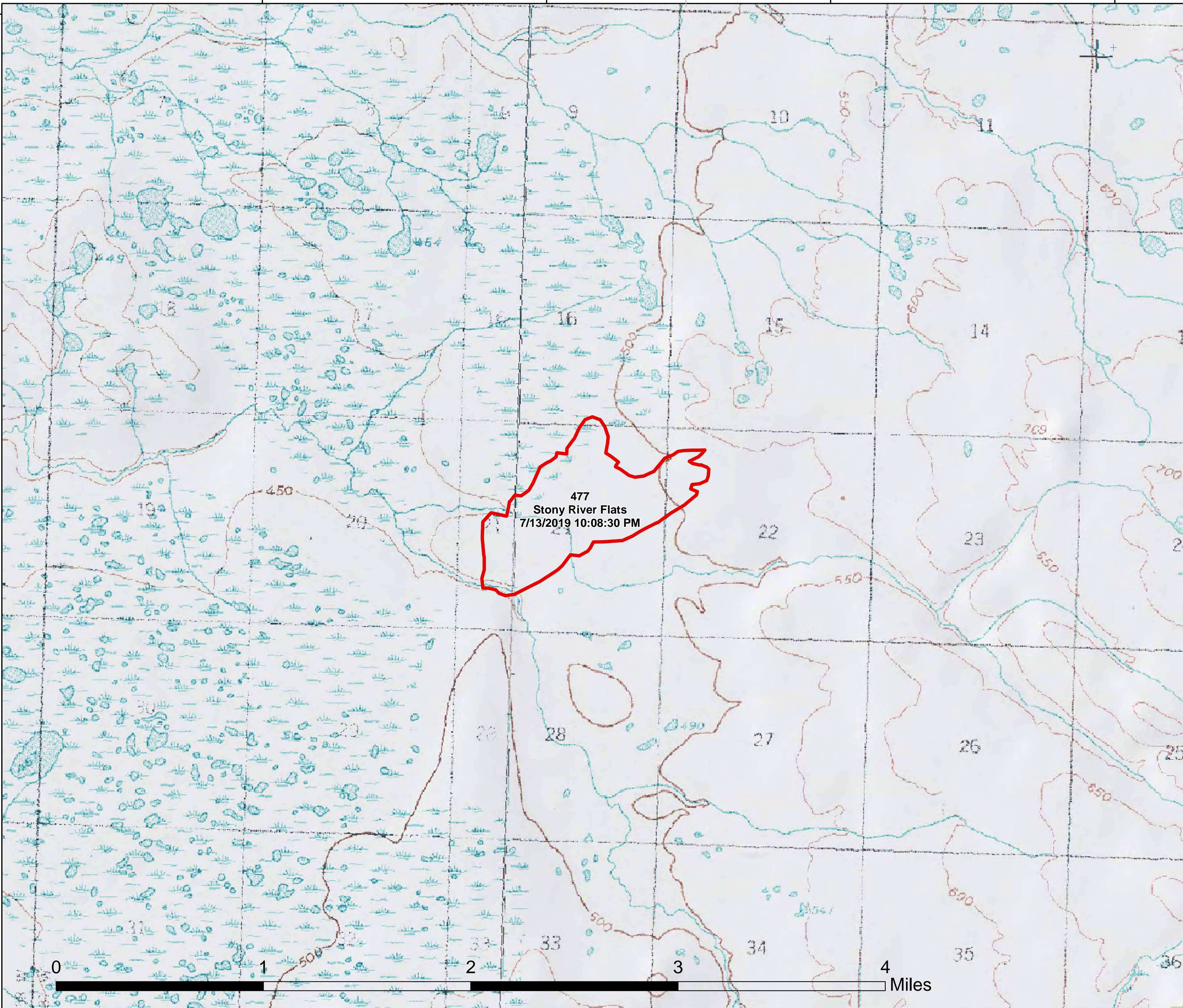
156°0'0"W

155°57'30"W

155°55'0"W

61°35'0"N


61°35'0"N



477
Stony River Flats
 Approx. Acres: **277**
 Mapped
 7/13/2019 10:08:30 PM



Printed 7/20/2019 @ 13:05

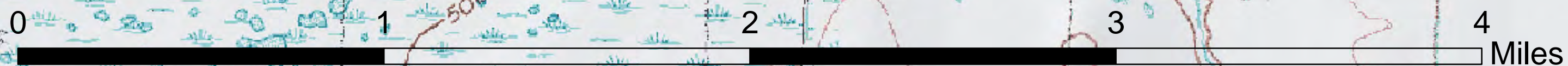
 Fire Perimeter



Alaska Albers Projection
 NAD 83 Datum
 GISS: Grube



<https://qr.go.page.link/vsqfP>



156°2'30"W

156°0'0"W

155°57'30"W

155°55'0"W