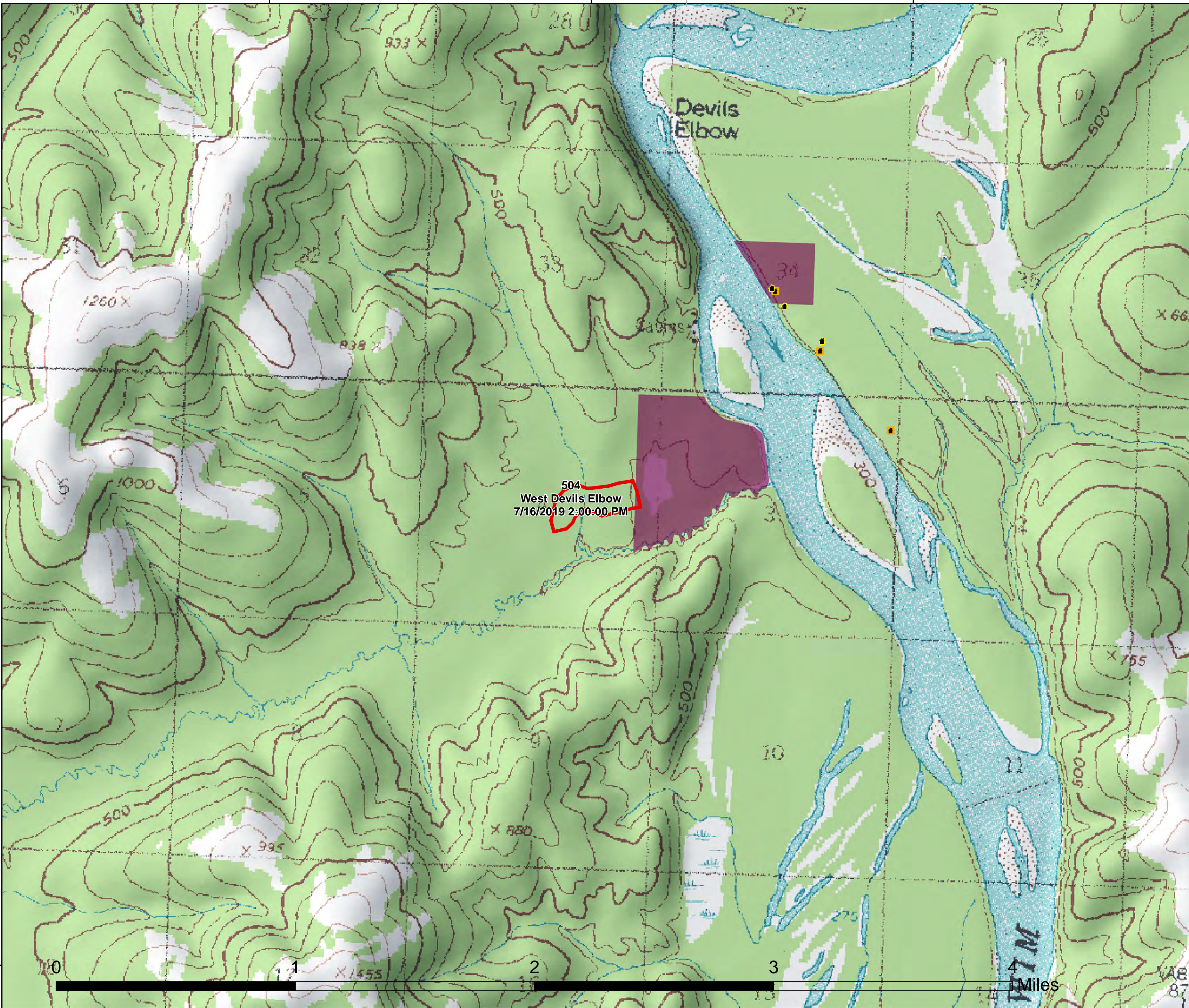


156°17'30"W

156°15'0"W





156°12'30"W



504
West Devils Elbow
 Approx. Acres: **28**
 Mapped
 7/16/2019 2:00:00 PM



Printed 7/20/2019 @ 13:09

-  Fire Perimeter
-  Structure from Known Sites
-  Structure from NonConfidentialSites
-  Allotment Boundary



Alaska Albers Projection
 NAD 83 Datum
 GISS: Grube



<https://qrqo.page.link/vsqfP>

156°17'30"W

156°15'0"W

156°12'30"W

62°50'N

62°50'N