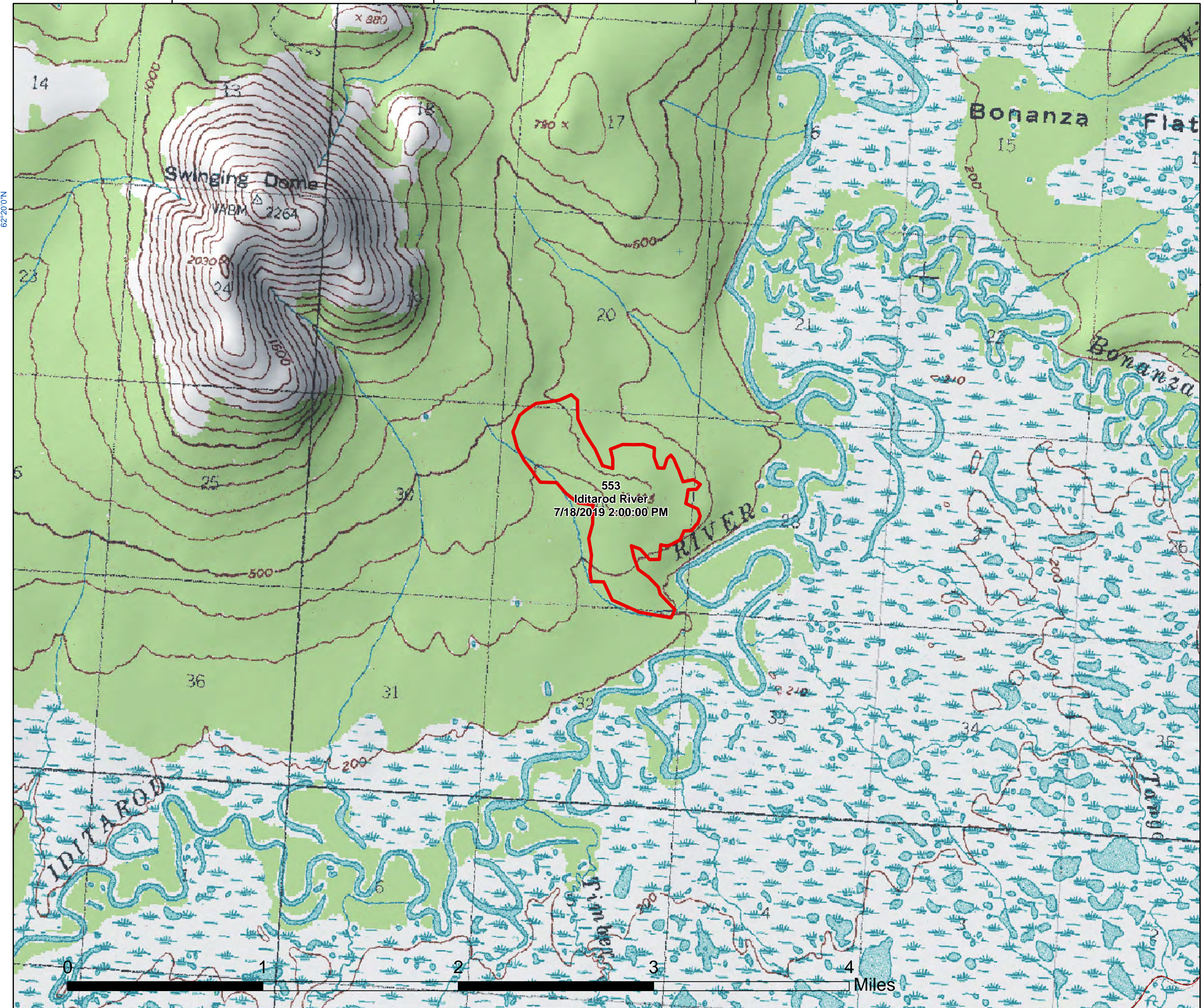


158°17'30"W

158°15'0"W

158°12'30"W




158°10'0"W



553
Iditarod River
 Approx. Acres: **303**
 Mapped
 7/18/2019 2:00:00 PM



Printed 7/20/2019 @ 13:16

-  Fire Perimeter
-  RS2477
-  Trails



Alaska Albers Projection
 NAD 83 Datum
 GISS: Grupe



<https://qr.go.page.link/vsqfP>

158°17'30"W

158°15'0"W

158°12'30"W

158°10'0"W

158°7'30"W