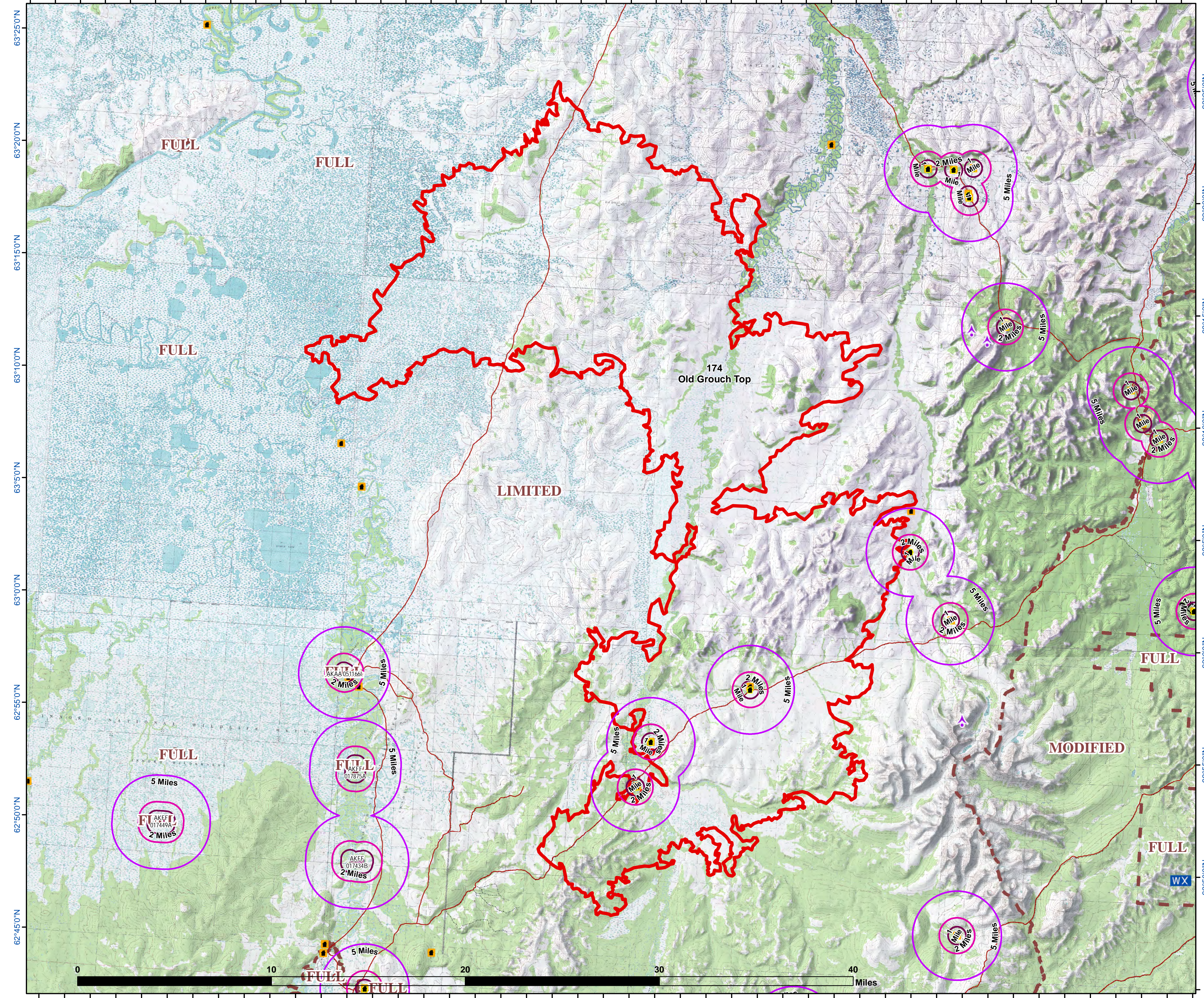


158°35'0"W 158°30'0"W 158°25'0"W 158°20'0"W 158°15'0"W 158°10'0"W 158°5'0"W 158°0'0"W 157°55'0"W 157°50'0"W 157°45'0"W 157°40'0"W 157°35'0"W 157°30'0"W 157°25'0"W 157°20'0"W 157°15'0"W 157°10'0"W 157°5'0"W 157°0'0"W 156°55'0"W 156°50'0"W 156°45'0"W 156°40'0"W



174
Old Grouch Top
Approx. Acres: 307,969
Mapped
7/16/2019 2:00:00 PM



Printed 7/24/2019 @ 09:28
Page 1 of 59

- Fire Perimeter
- Structures & Allotments Buffer**
- 1 Mile
- 2 Miles
- 5 Miles
- Fire Management Options
- Allotment Boundary
- Structure from Known Sites
- Communications
- Mining Camp/Equipment
- Wildland Fire Structure Other
- RAWs
- Structure from NonConfidentialSites
- Road_Centerlines
- RS2477
- Trails

FULL
LIMITED
MODIFIED
FULL
FULL
WX

Alaska Albers Projection
NAD 83 Datum
GISS: Grube



<https://qrqo.page.link/u16Tm>

158°25'0"W 158°20'0"W 158°15'0"W 158°10'0"W 158°5'0"W 158°0'0"W 157°55'0"W 157°50'0"W 157°45'0"W 157°40'0"W 157°35'0"W 157°30'0"W 157°25'0"W 157°20'0"W 157°15'0"W 157°10'0"W 157°5'0"W 157°0'0"W 156°55'0"W 156°50'0"W 156°45'0"W 156°40'0"W 156°35'0"W