

158°45'0"W 158°42'30"W 158°40'0"W 158°37'30"W 158°35'0"W 158°32'30"W 158°30'0"W 158°27'30"W 158°25'0"W 158°22'30"W 158°20'0"W 158°17'30"W 158°15'0"W 158°12'30"W 158°10'0"W 158°7'30"W 158°5'0"W 158°2'30"W 158°0'0"W 157°57'30"W 157°55'0"W 157°52'30"W 157°50'0"W 157°47'30"W

534
Smith Creek
Approx. Acres: 49,444
Mapped
7/23/2019 2:00:00 PM



Printed 7/24/2019 @ 10:04
Page 49 of 59

62°15'0"N

62°10'0"N

62°5'0"N

62°0'0"N

62°15'0"N

62°10'0"N

62°5'0"N

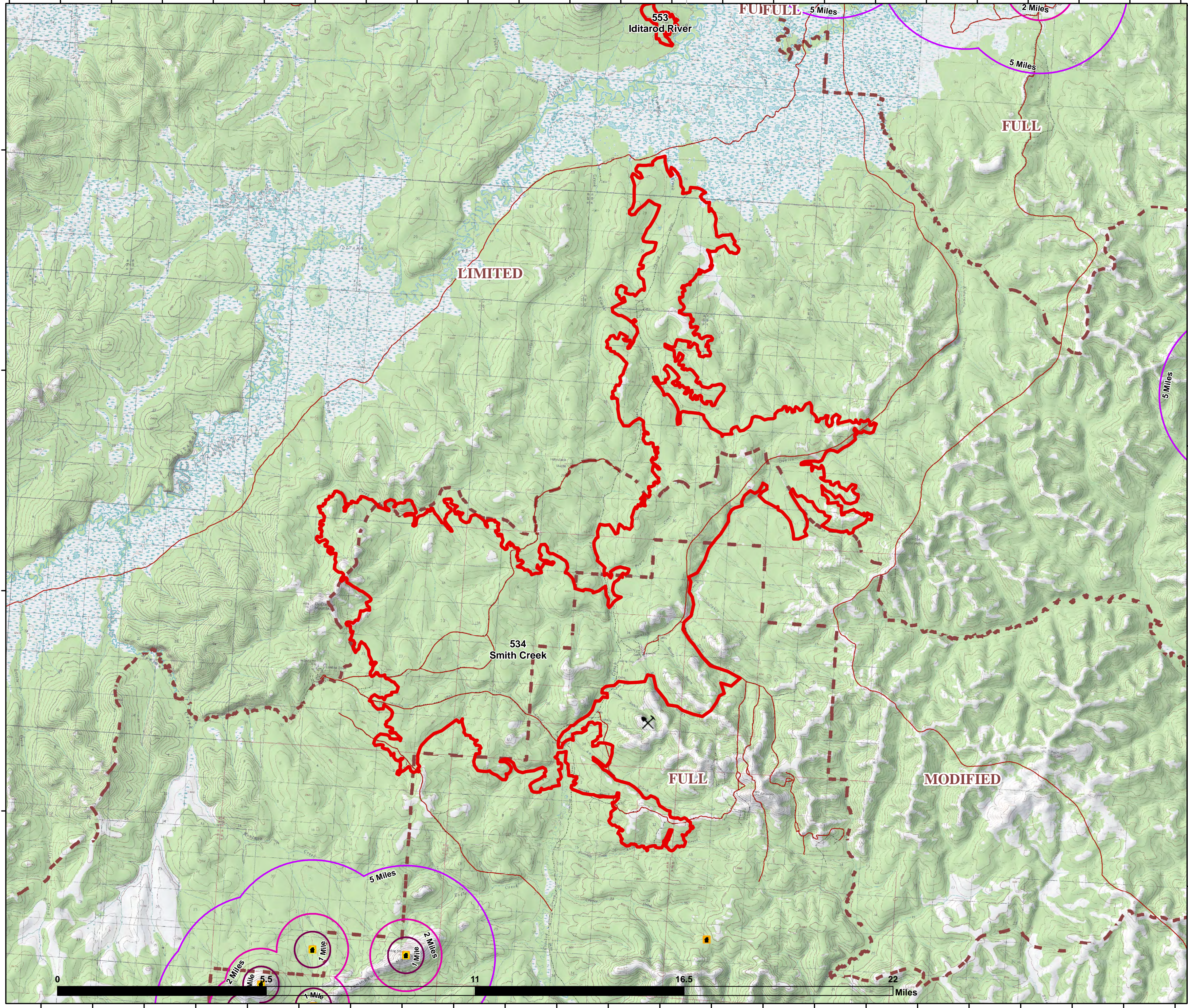
62°0'0"N

- Fire Perimeter
- Structures & Allotments Buffer**
- 1 Mile
- 2 Miles
- 5 Miles
- Fire Management Options
- Structure from Known Sites
- Mining Camp/Equipment
- Structure from NonConfidentialSites
- RS2477
- Trails

Alaska Albers Projection
NAD 83 Datum
GISS: Grube



<https://qrqo.page.link/u16Tm>



553
Iditarod River

LIMITED

FUFUEL 5 Miles

FULL

534
Smith Creek

FULL

MODIFIED

0 11 16.5 22 Miles

158°40'0"W 158°37'30"W 158°35'0"W 158°32'30"W 158°30'0"W 158°27'30"W 158°25'0"W 158°22'30"W 158°20'0"W 158°17'30"W 158°15'0"W 158°12'30"W 158°10'0"W 158°7'30"W 158°5'0"W 158°2'30"W 158°0'0"W 157°57'30"W 157°55'0"W 157°52'30"W 157°50'0"W 157°47'30"W 157°45'0"W