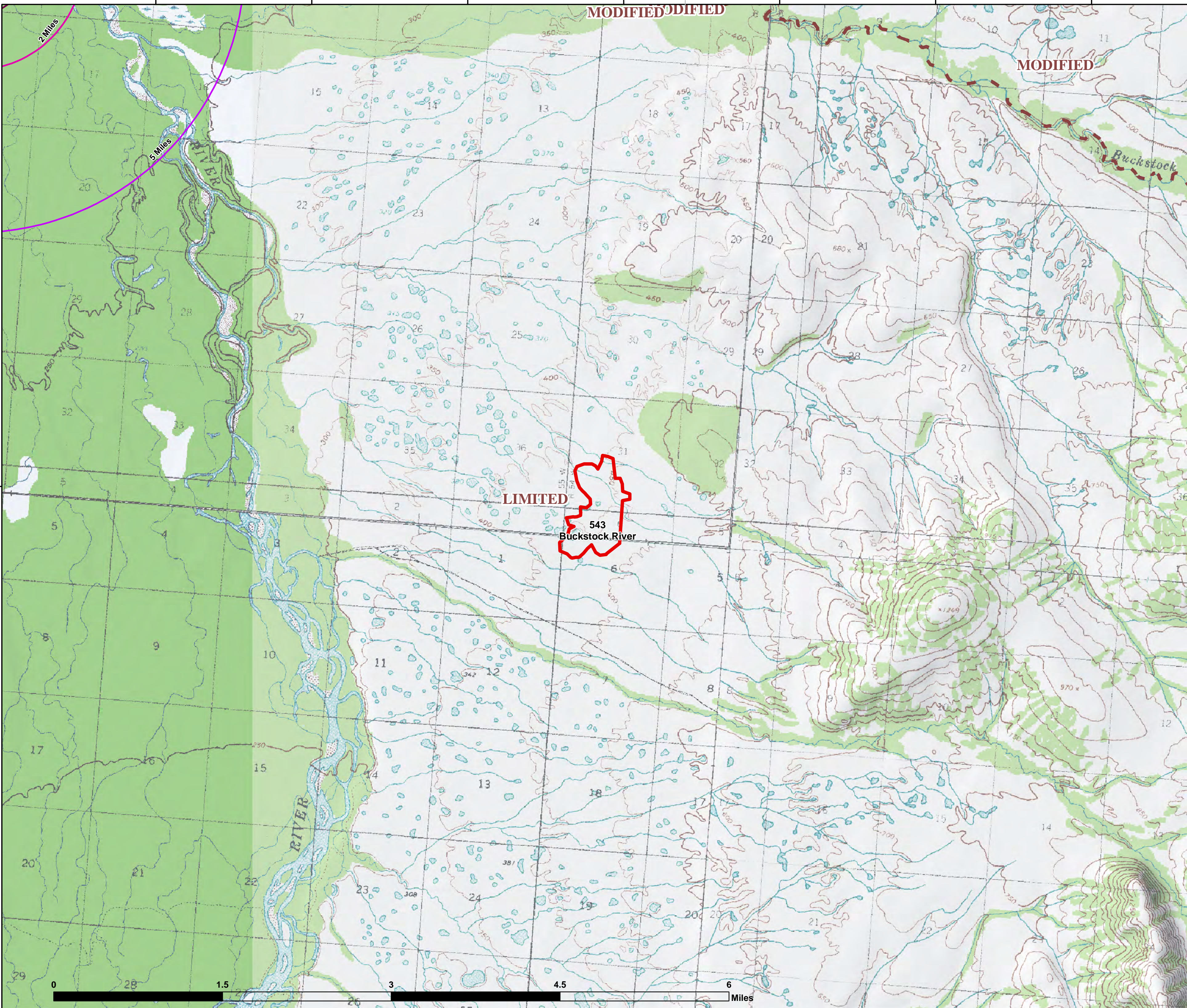


159°10'0"W 159°7'30"W 159°5'0"W 159°2'30"W 159°0'0"W 158°57'30"W 158°55'0"W




543
Buckstock River
Approx. Acres: 208
Mapped
7/17/2019 2:00:00 PM




Printed 7/24/2019 @ 10:06
Page 51 of 59

 Fire Perimeter

Structures & Allotments
Buffer

 1 Mile

 2 Miles

 5 Miles

 Fire Management Options

 Trails

Alaska Albers Projection
NAD 83 Datum
GISS: Grube



<https://qrgo.page.link/u16Tm>

159°10'0"W 159°7'30"W 159°5'0"W 159°2'30"W 159°0'0"W 158°57'30"W 158°55'0"W 158°52'30"W