

156°5'0"W 156°2'30"W 156°0'0"W 155°57'30"W 155°55'0"W 155°52'30"W 155°50'0"W 155°47'30"W 155°45'0"W 155°42'30"W 155°40'0"W 155°37'30"W 155°35'0"W 155°32'30"W 155°30'0"W 155°27'30"W 155°25'0"W 155°22'30"W 155°20'0"W 155°17'30"W

63°20'0"N

63°15'0"N

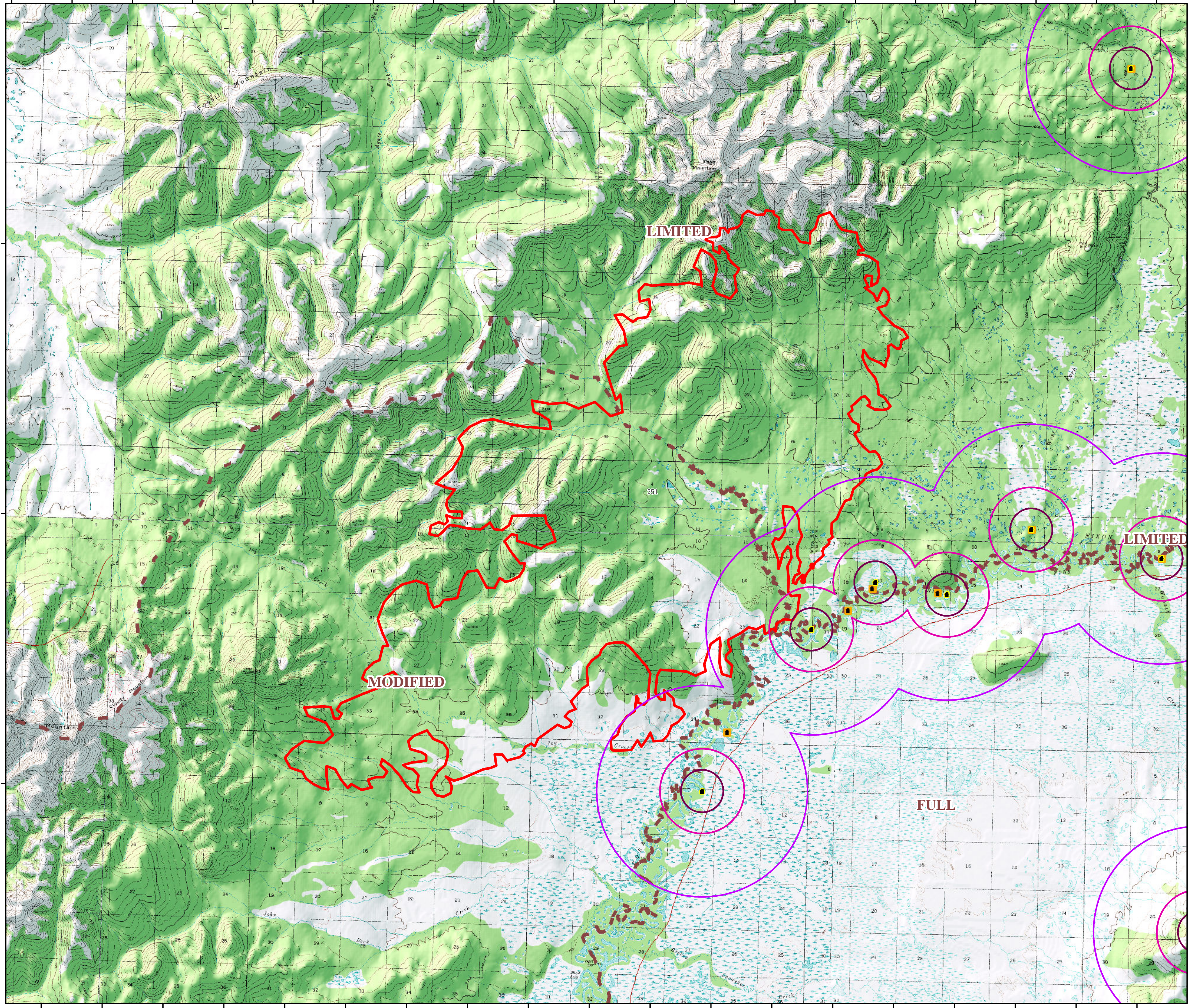
63°10'0"N

63°20'0"N

63°15'0"N

63°10'0"N

156°2'30"W 156°0'0"W 155°57'30"W 155°55'0"W 155°52'30"W 155°50'0"W 155°47'30"W 155°45'0"W 155°42'30"W 155°40'0"W 155°37'30"W 155°35'0"W 155°32'30"W 155°30'0"W 155°27'30"W 155°25'0"W 155°22'30"W 155°20'0"W 155°17'30"W



351
Page Mountain
46897 Acres

Perimeter Date: 7/13/2019



Printed 7/27/2019 @ 13:08
Page 8 of 55

Structures & Allotments Buffer

- .5 Mile
- 1 Miles
- 2.5 Miles
- Fire Perimeter
- Fire Management Options
- Structure from Known Sites



Alaska Albers Projection
NAD 83 Datum
GISS: LaBarre



<https://qrqo.page.link/u16Tm>
00.23.9.751
 Miles