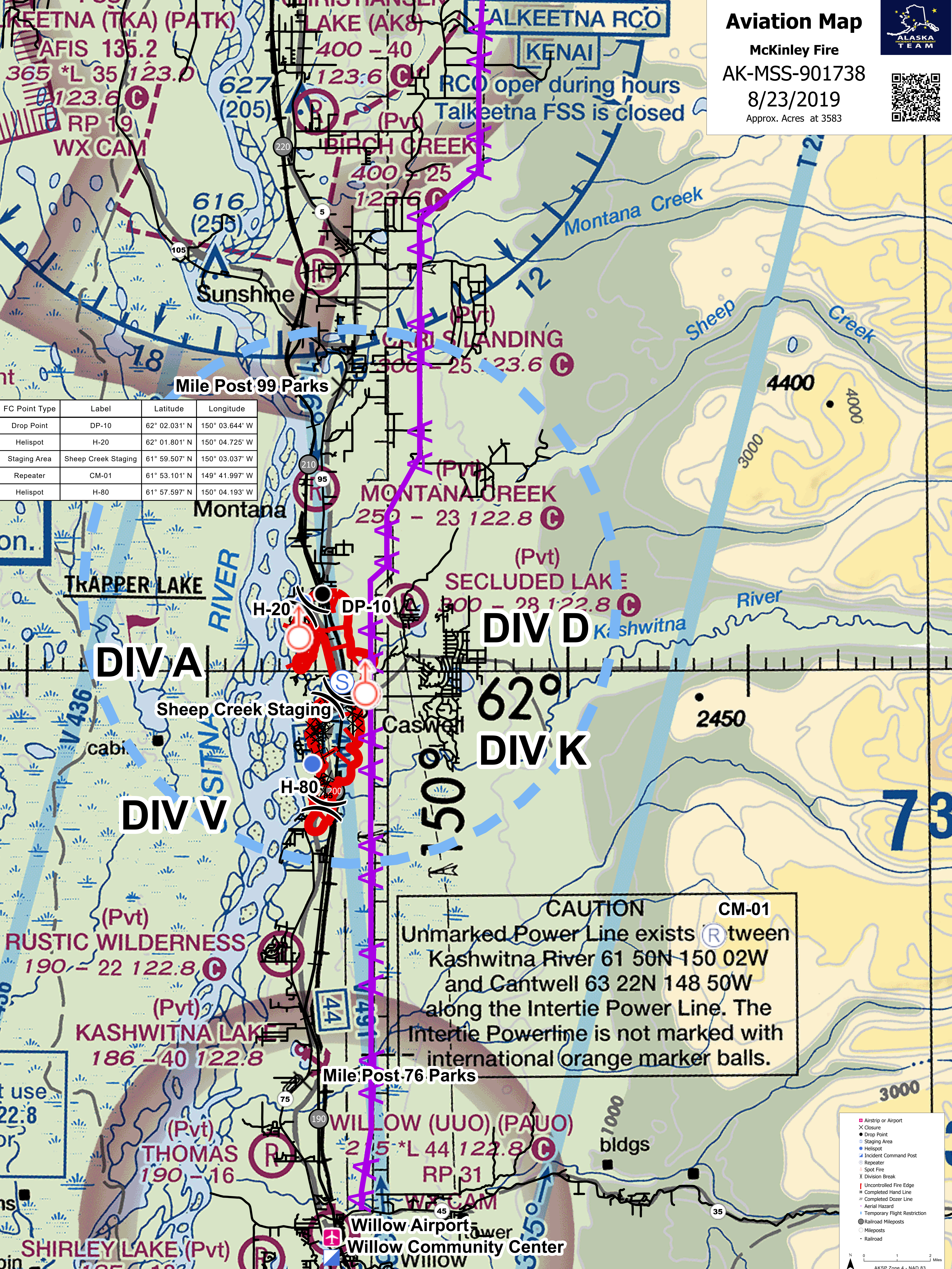


Aviation Map

McKinley Fire
AK-MSS-901738
8/23/2019
 Approx. Acres at 3583



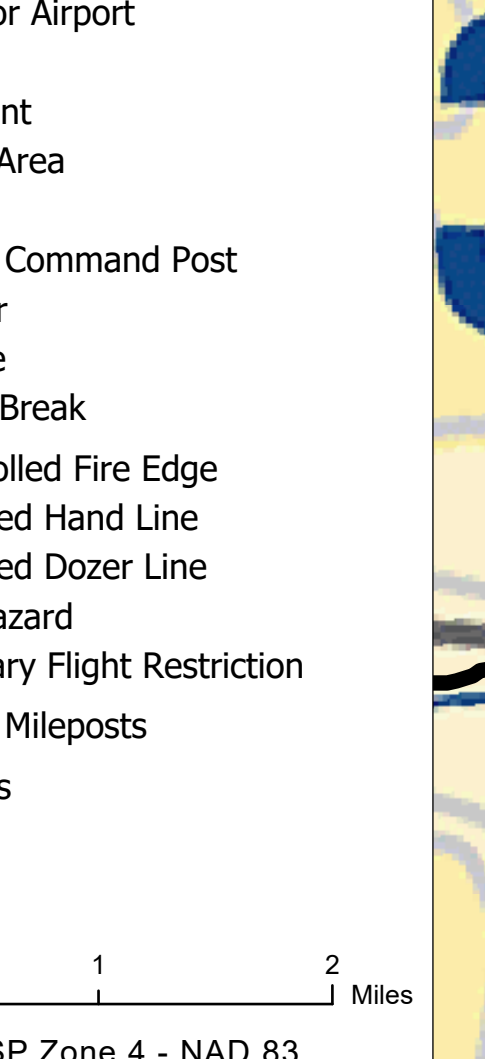


Mile Post 99 Parks

FC Point Type	Label	Latitude	Longitude
Drop Point	DP-10	62° 02.031' N	150° 03.644' W
Helispot	H-20	62° 01.801' N	150° 04.725' W
Staging Area	Sheep Creek Staging	61° 59.507' N	150° 03.037' W
Repeater	CM-01	61° 53.101' N	149° 41.997' W
Helispot	H-80	61° 57.597' N	150° 04.193' W

CAUTION **CM-01**

Unmarked Power Line exists between
 Kashwitna River 61 50N 150 02W
 and Cantwell 63 22N 148 50W
 along the Intertie Power Line. The
 Intertie Powerline is not marked with
 international orange marker balls.



- ✕ Airstrip or Airport
- ✕ Closure
- Drop Point
- Staging Area
- Helispot
- Incident Command Post
- Repeater
- Spot Fire
- | Division Break
- | Uncontrolled Fire Edge
- | Completed Hand Line
- | Completed Dozer Line
- | Aerial Hazard
- | Temporary Flight Restriction
- Mileposts
- Railroad

0 1 2 Miles
 AKSP Zone 4 - NAD 83