

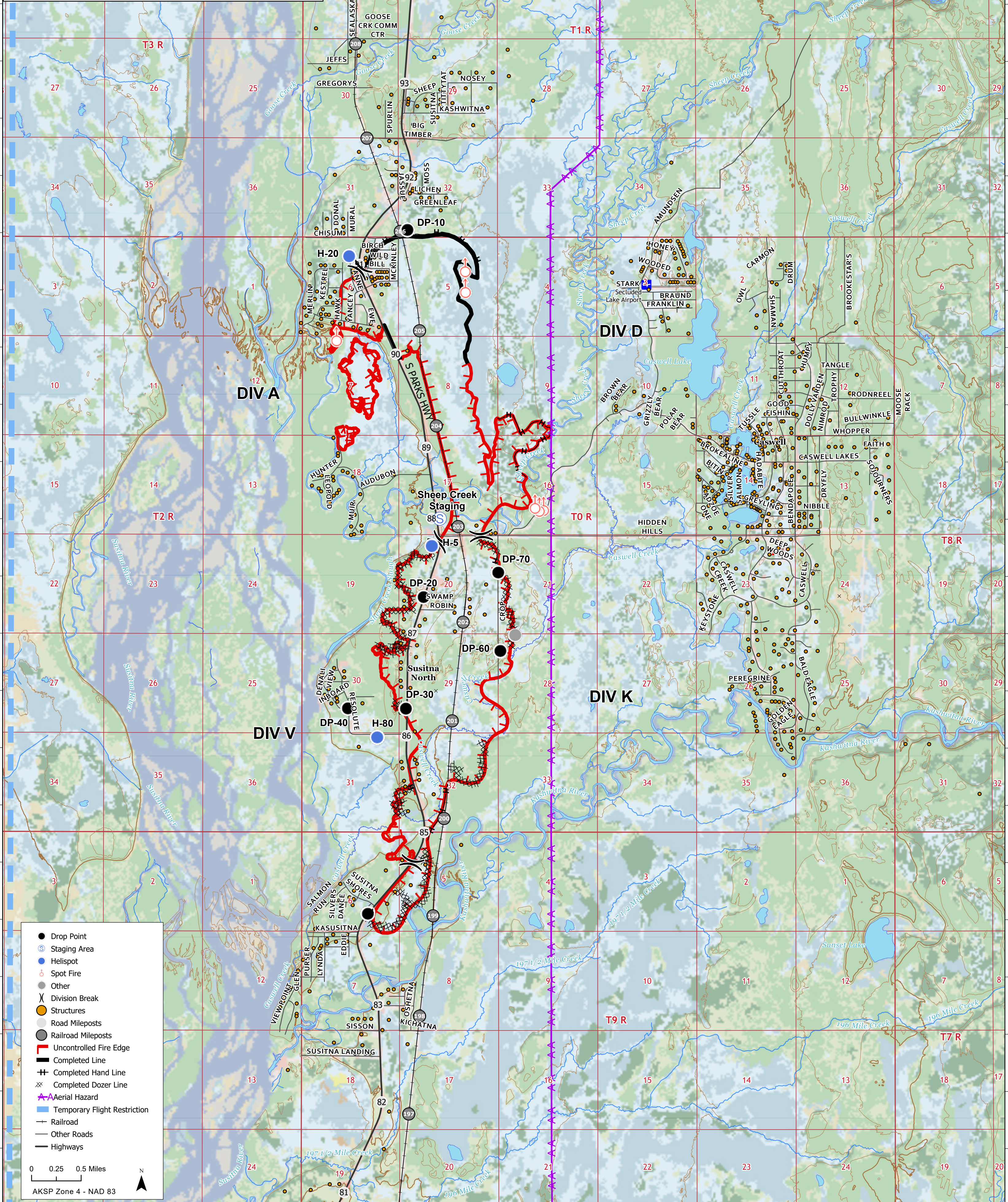
-150°11' -150°10'30" -150°10' -150°9'30" -150°9' -150°8'30" -150°8' -150°7'30" -150°7' -150°6'30" -150°6' -150°5'30" -150°5' -150°4'30" -150°4' -150°3'30" -150°3' -150°2'30" -150°2' -150°1'30" -150°1' -150°0'30" -150°0' -149°59'30" -149°59' -149°58'30" -149°58' -149°57'30" -149°57' -149°56'30" -149°56' -149°55'30" -149°55' -149°54'30" -149°54' -149°53'30" -149°53'

# McKinley Fire

AK-MSS-901738

## Operations Map

8/24/2019  
Approx. Acres 3,369



- Drop Point
- ⊙ Staging Area
- Helispot
- Spot Fire
- Other
- ⌘ Division Break
- Structures
- Road Mileposts
- Railroad Mileposts
- Uncontrolled Fire Edge
- Completed Line
- Completed Hand Line
- Completed Dozer Line
- Aerial Hazard
- Temporary Flight Restriction
- Railroad
- Other Roads
- Highways

0 0.25 0.5 Miles  
AKSP Zone 4 - NAD 83

-150°11' -150°10'30" -150°10' -150°9'30" -150°9' -150°8'30" -150°8' -150°7'30" -150°7' -150°6'30" -150°6' -150°5'30" -150°5' -150°4'30" -150°4' -150°3'30" -150°3' -150°2'30" -150°2' -150°1'30" -150°1' -150°0'30" -150°0' -149°59'30" -149°59' -149°58'30" -149°58' -149°57'30" -149°57' -149°56'30" -149°56' -149°55'30" -149°55' -149°54'30" -149°54' -149°53'30" -149°53'