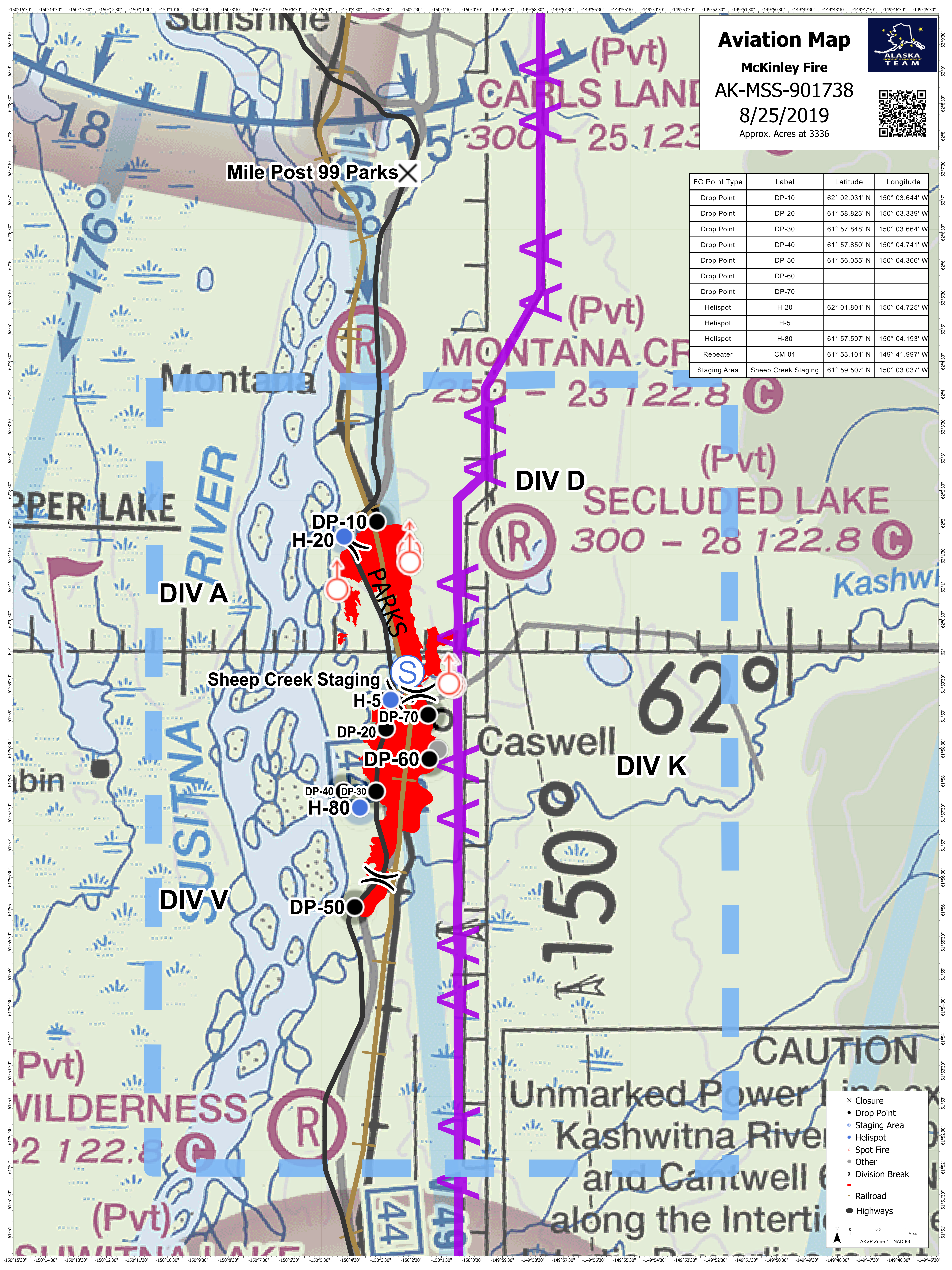


Aviation Map

McKinley Fire
AK-MSS-901738
8/25/2019
 Approx. Acres at 3336




FC Point Type	Label	Latitude	Longitude
Drop Point	DP-10	62° 02.031' N	150° 03.644' W
Drop Point	DP-20	61° 58.823' N	150° 03.339' W
Drop Point	DP-30	61° 57.848' N	150° 03.664' W
Drop Point	DP-40	61° 57.850' N	150° 04.741' W
Drop Point	DP-50	61° 56.055' N	150° 04.366' W
Drop Point	DP-60		
Drop Point	DP-70		
Helispot	H-20	62° 01.801' N	150° 04.725' W
Helispot	H-5		
Helispot	H-80	61° 57.597' N	150° 04.193' W
Repeater	CM-01	61° 53.101' N	149° 41.997' W
Staging Area	Sheep Creek Staging	61° 59.507' N	150° 03.037' W



- ✕ Closure
- Drop Point
- Staging Area
- Helispot
- Spot Fire
- Other
- ✕ Division Break
- Railroad
- Highways

0 0.5 1 Miles
 AKSP Zone 4 - NAD 83