

-150°11' -150°10'30" -150°10' -150°9'30" -150°9' -150°8'30" -150°8' -150°7'30" -150°7' -150°6'30" -150°6' -150°5'30" -150°5' -150°4'30" -150°4' -150°3'30" -150°3' -150°2'30" -150°2' -150°1'30" -150°1' -150°0'30" -150°0' -149°59'30" -149°59' -149°58'30" -149°58' -149°57'30" -149°57' -149°56'30" -149°56' -149°55'30" -149°55' -149°54'30" -149°54' -149°53'30" -149°53'

McKinley Fire

Operations Map

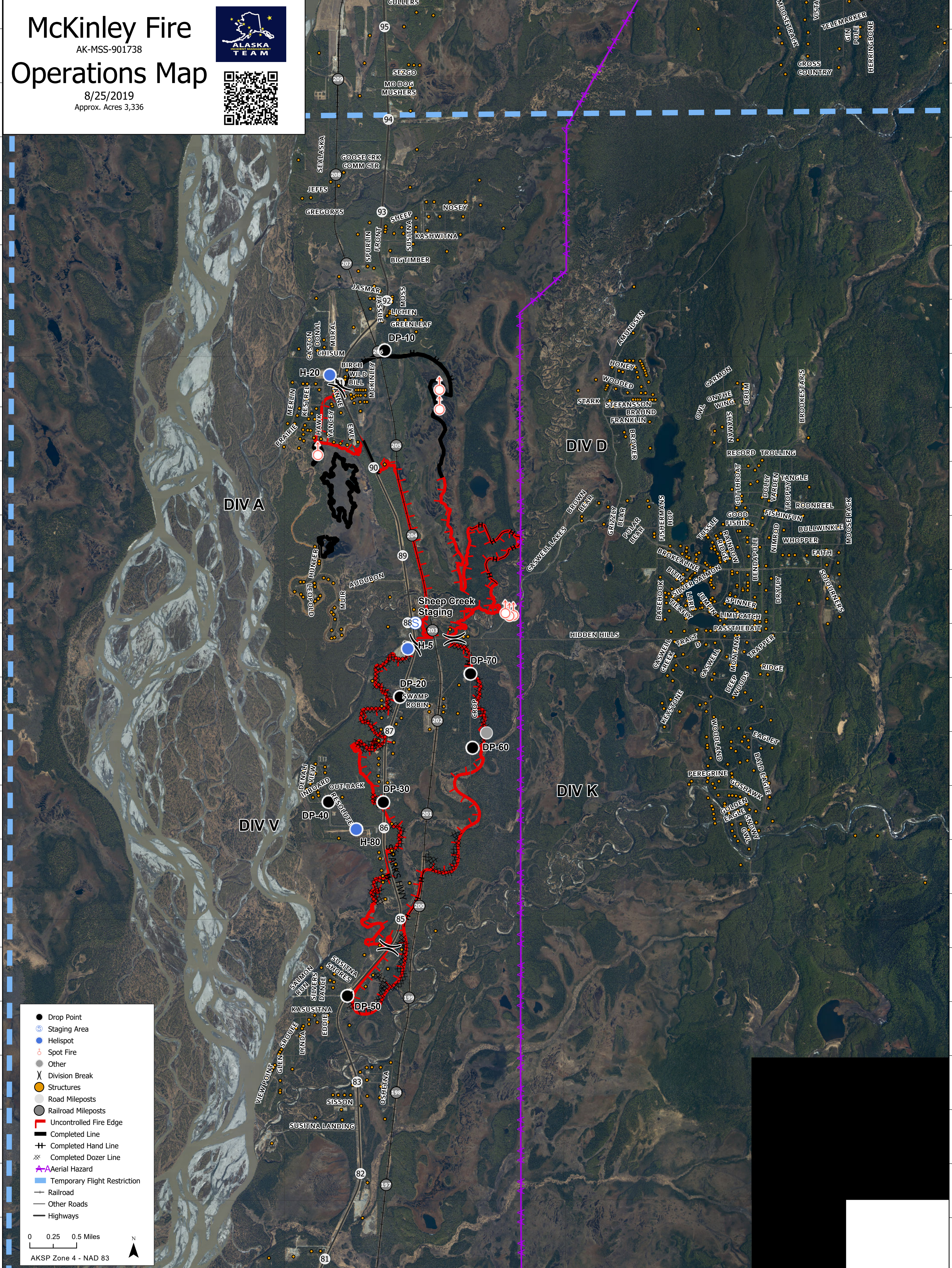
AK-MSS-901738

8/25/2019
Approx. Acres 3,336

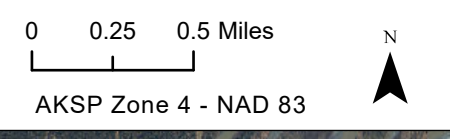


62°5' 62°4'30" 62°4' 62°3'30" 62°3' 62°2'30" 62°2' 62°1'30" 62°1' 62°0'30" 62°0' 61°59'30" 61°59' 61°58'30" 61°58' 61°57'30" 61°57' 61°56'30" 61°56' 61°55'30" 61°55' 61°54'30" 61°54'

62°5' 62°4'30" 62°4' 62°3'30" 62°3' 62°2'30" 62°2' 62°1'30" 62°1' 62°0'30" 62°0' 61°59'30" 61°59' 61°58'30" 61°58' 61°57'30" 61°57' 61°56'30" 61°56' 61°55'30" 61°55' 61°54'30" 61°54'



- Drop Point
- ⊙ Staging Area
- Helispot
- Spot Fire
- Other
- X Division Break
- Structures
- Road Mileposts
- Railroad Mileposts
- Uncontrolled Fire Edge
- Completed Line
- Completed Hand Line
- Completed Dozer Line
- ⚡ Aerial Hazard
- Temporary Flight Restriction
- Railroad
- Other Roads
- Highways



-150°11' -150°10'30" -150°10' -150°9'30" -150°9' -150°8'30" -150°8' -150°7'30" -150°7' -150°6'30" -150°6' -150°5'30" -150°5' -150°4'30" -150°4' -150°3'30" -150°3' -150°2'30" -150°2' -150°1'30" -150°1' -150°0'30" -150°0' -149°59'30" -149°59' -149°58'30" -149°58' -149°57'30" -149°57' -149°56'30" -149°56' -149°55'30" -149°55' -149°54'30" -149°54' -149°53'30" -149°53'