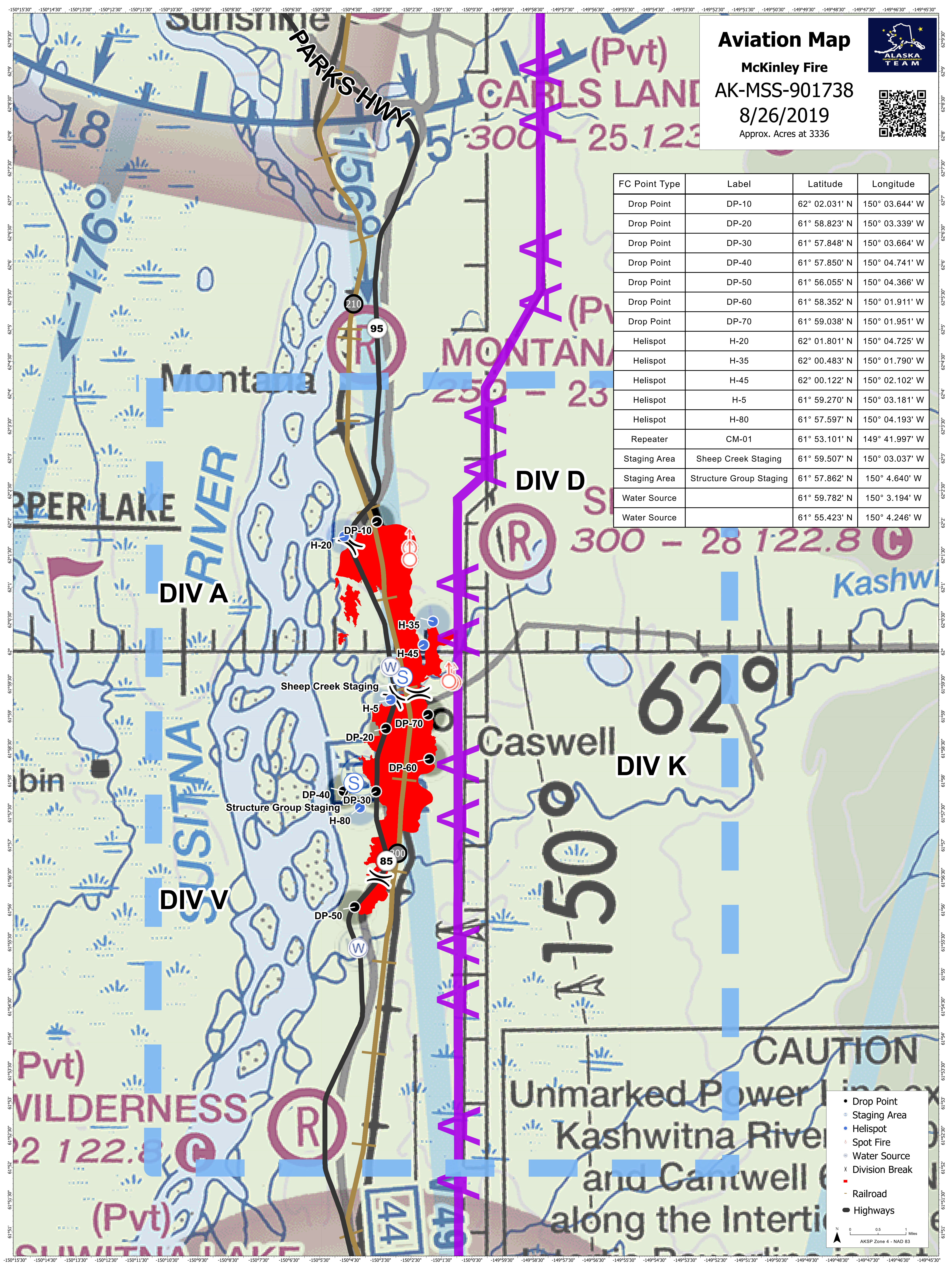


# Aviation Map

**McKinley Fire**  
**AK-MSS-901738**  
**8/26/2019**  
 Approx. Acres at 3336




FC Point Type	Label	Latitude	Longitude
Drop Point	DP-10	62° 02.031' N	150° 03.644' W
Drop Point	DP-20	61° 58.823' N	150° 03.339' W
Drop Point	DP-30	61° 57.848' N	150° 03.664' W
Drop Point	DP-40	61° 57.850' N	150° 04.741' W
Drop Point	DP-50	61° 56.055' N	150° 04.366' W
Drop Point	DP-60	61° 58.352' N	150° 01.911' W
Drop Point	DP-70	61° 59.038' N	150° 01.951' W
Helispot	H-20	62° 01.801' N	150° 04.725' W
Helispot	H-35	62° 00.483' N	150° 01.790' W
Helispot	H-45	62° 00.122' N	150° 02.102' W
Helispot	H-5	61° 59.270' N	150° 03.181' W
Helispot	H-80	61° 57.597' N	150° 04.193' W
Repeater	CM-01	61° 53.101' N	149° 41.997' W
Staging Area	Sheep Creek Staging	61° 59.507' N	150° 03.037' W
Staging Area	Structure Group Staging	61° 57.862' N	150° 4.640' W
Water Source		61° 59.782' N	150° 3.194' W
Water Source		61° 55.423' N	150° 4.246' W



- Drop Point
- Staging Area
- Helispot
- Spot Fire
- Water Source
- x Division Break
- Railroad
- Highways

0 0.5 1 Miles  
 AKSP Zone 4 - NAD 83