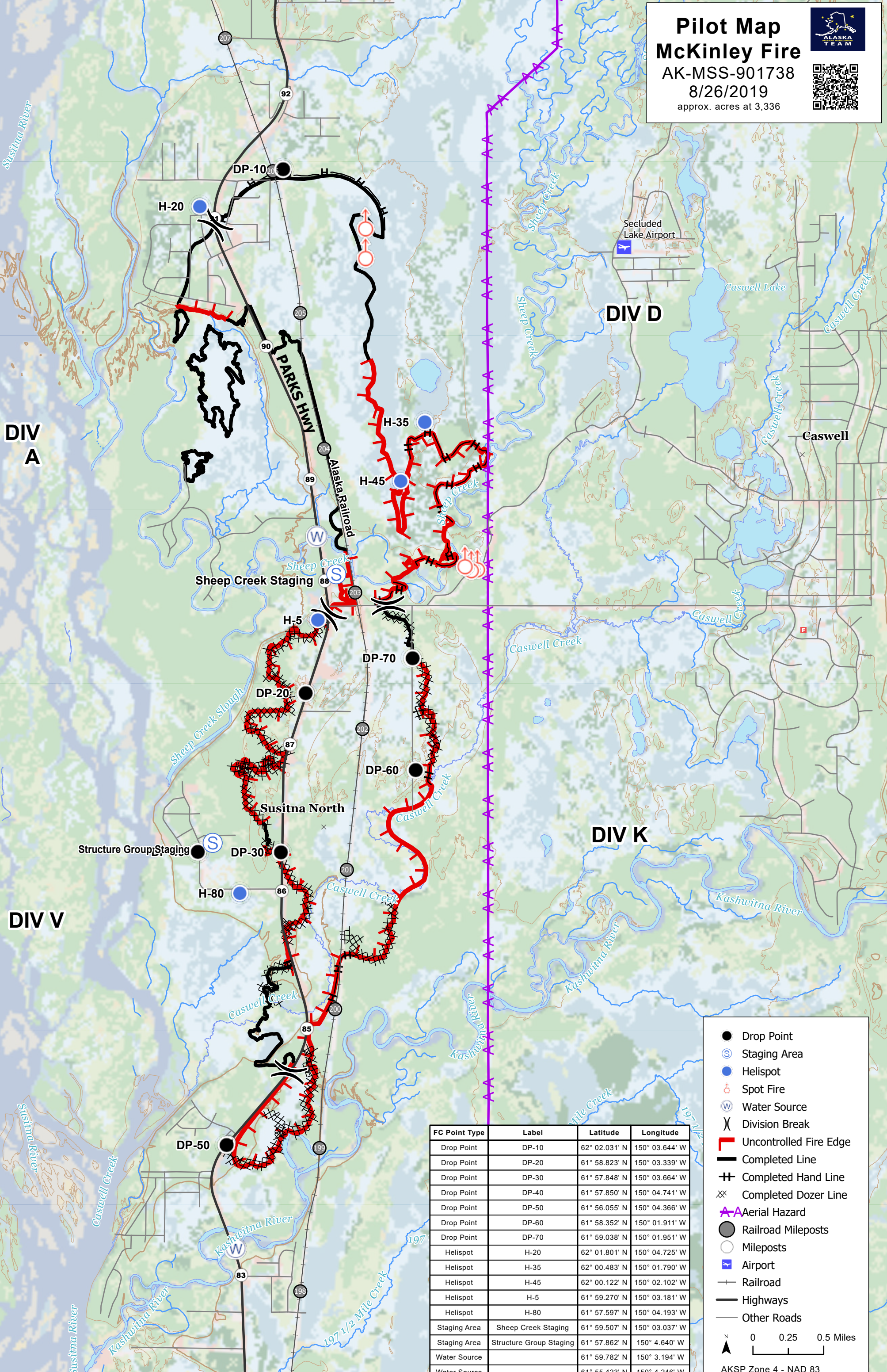


**Pilot Map**  
**McKinley Fire**  
 AK-MSS-901738  
 8/26/2019  
 approx. acres at 3,336



FC Point Type	Label	Latitude	Longitude
Drop Point	DP-10	62° 02.031' N	150° 03.644' W
Drop Point	DP-20	61° 58.823' N	150° 03.339' W
Drop Point	DP-30	61° 57.848' N	150° 03.664' W
Drop Point	DP-40	61° 57.850' N	150° 04.741' W
Drop Point	DP-50	61° 56.055' N	150° 04.366' W
Drop Point	DP-60	61° 58.352' N	150° 01.911' W
Drop Point	DP-70	61° 59.038' N	150° 01.951' W
Helispot	H-20	62° 01.801' N	150° 04.725' W
Helispot	H-35	62° 00.483' N	150° 01.790' W
Helispot	H-45	62° 00.122' N	150° 02.102' W
Helispot	H-5	61° 59.270' N	150° 03.181' W
Helispot	H-80	61° 57.597' N	150° 04.193' W
Staging Area	Sheep Creek Staging	61° 59.507' N	150° 03.037' W
Staging Area	Structure Group Staging	61° 57.862' N	150° 04.640' W
Water Source		61° 59.782' N	150° 03.194' W
Water Source		61° 55.423' N	150° 04.246' W

- Drop Point
- Ⓢ Staging Area
- Helispot
- ⊕ Spot Fire
- Ⓜ Water Source
- ⌘ Division Break
- ▬ Uncontrolled Fire Edge
- ▬ Completed Line
- ⊕ Completed Hand Line
- ⊗ Completed Dozer Line
- ⚡ Aerial Hazard
- Railroad Mileposts
- Mileposts
- ✈ Airport
- Railroad
- Highways
- Other Roads

0 0.25 0.5 Miles

AKSP Zone 4 - NAD 83