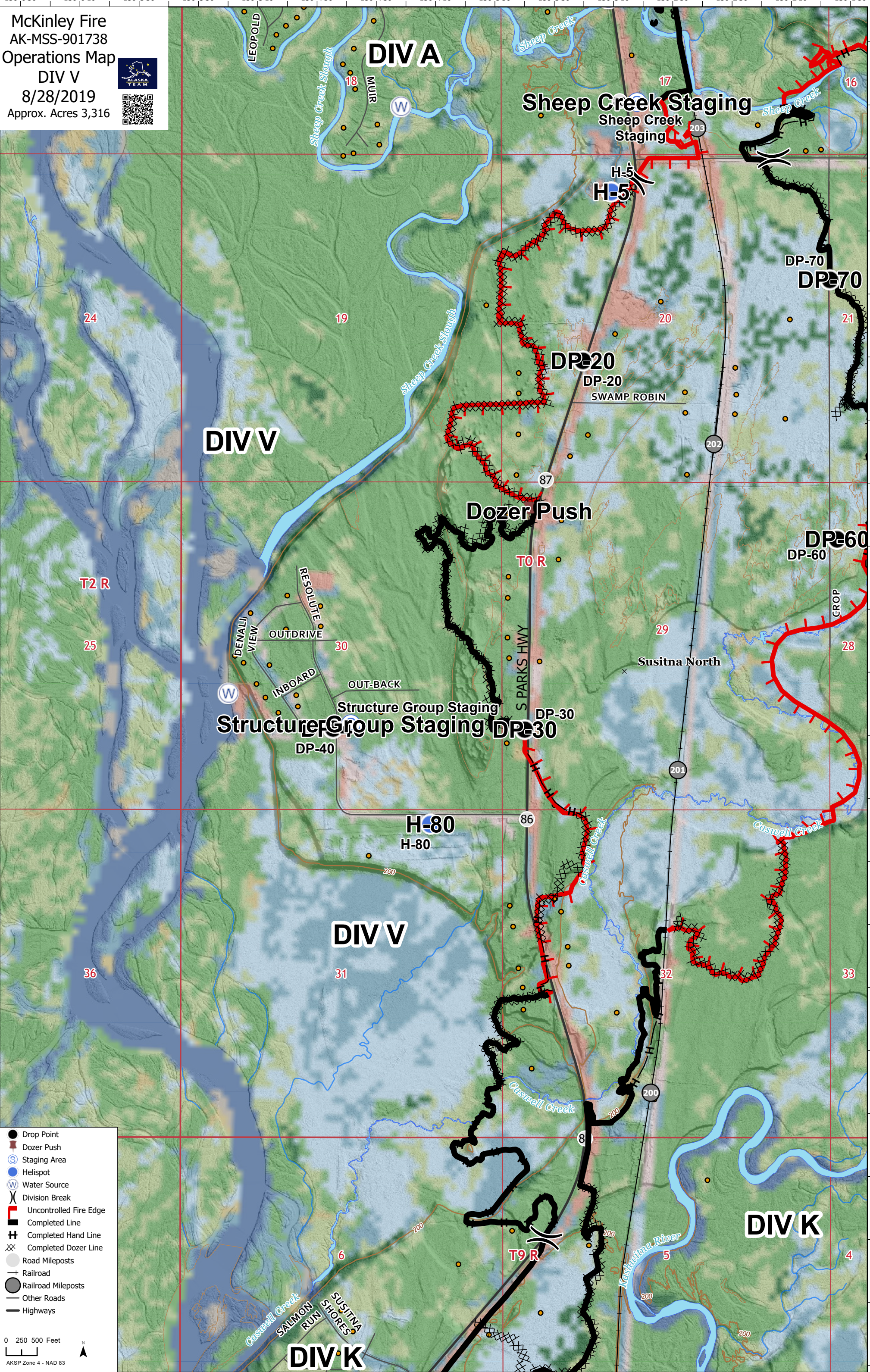


McKinley Fire
 AK-MSS-901738
 Operations Map
 DIV V
 8/28/2019
 Approx. Acres 3,316



Legend

- Drop Point
- Dozer Push
- ⊙ Staging Area
- ⊙ Helispot
- ⊙ Water Source
- ⌘ Division Break
- ▬ Uncontrolled Fire Edge
- ▬ Completed Line
- ⊕ Completed Hand Line
- ⊗ Completed Dozer Line
- Road Mileposts
- ⊕ Railroad
- Railroad Mileposts
- Other Roads
- ▬ Highways

0 250 500 Feet
 AKSP Zone 4 - NAD 83

-150°6'30" -150°6'10" -150°5'50" -150°5'30" -150°5'10" -150°4'50" -150°4'30" -150°4'10" -150°3'50" -150°3'30" -150°3'10" -150°2'50" -150°2'30" -150°2'10" -150°1'50"

61°59'40" 61°59'30" 61°59'20" 61°59'10" 61°59' 61°58'50" 61°58'40" 61°58'30" 61°58'20" 61°58'10" 61°58' 61°57'50" 61°57'40" 61°57'30" 61°57'20" 61°57'10" 61°57' 61°56'50" 61°56'40" 61°56'30" 61°56'20" 61°56'10"