

# Aviation Map



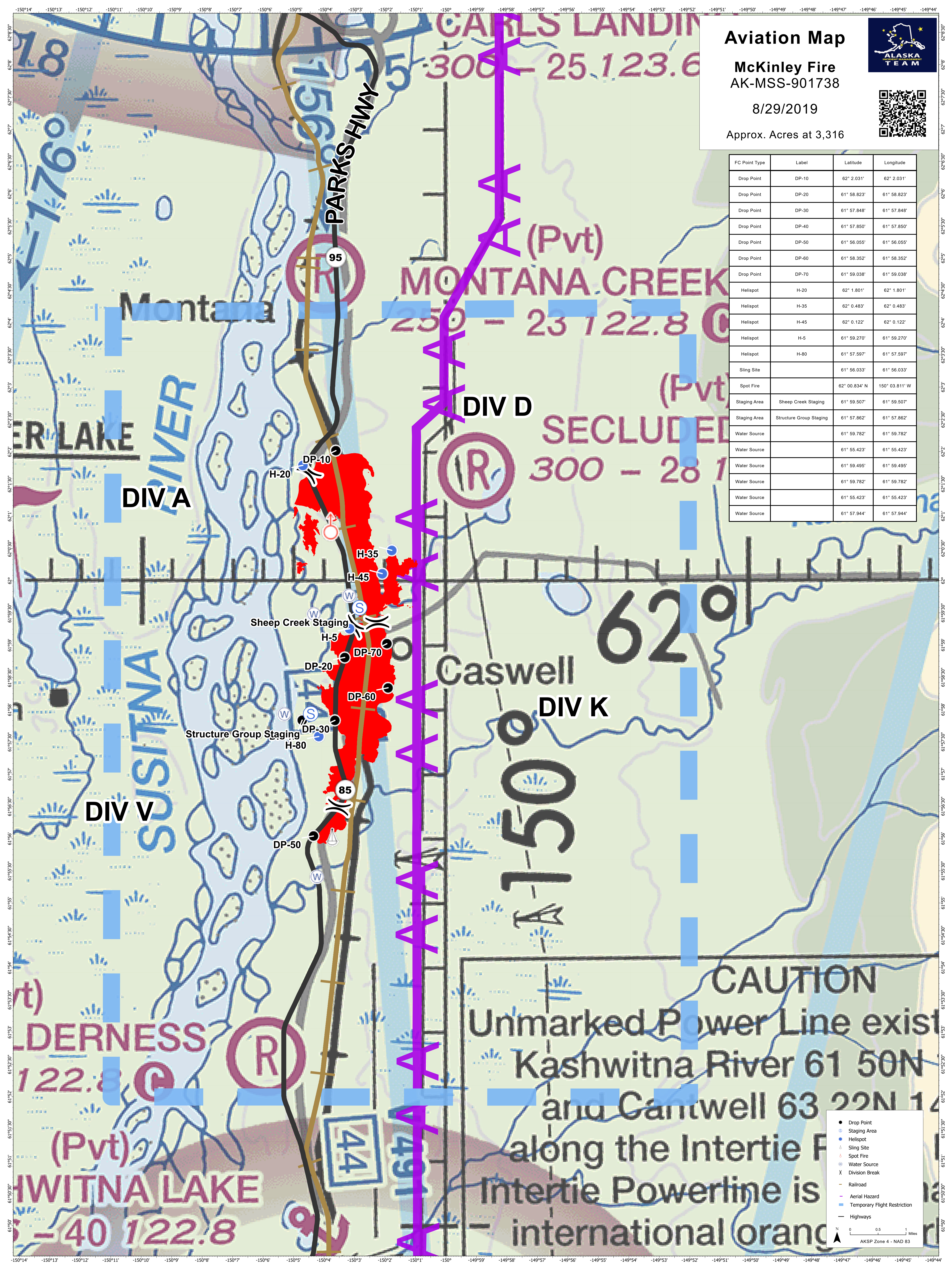
**McKinley Fire**  
AK-MSS-901738

8/29/2019

Approx. Acres at 3,316



FC Point Type	Label	Latitude	Longitude
Drop Point	DP-10	62° 2.031'	62° 2.031'
Drop Point	DP-20	61° 58.823'	61° 58.823'
Drop Point	DP-30	61° 57.848'	61° 57.848'
Drop Point	DP-40	61° 57.850'	61° 57.850'
Drop Point	DP-50	61° 56.055'	61° 56.055'
Drop Point	DP-60	61° 58.352'	61° 58.352'
Drop Point	DP-70	61° 59.038'	61° 59.038'
Helispot	H-20	62° 1.801'	62° 1.801'
Helispot	H-35	62° 0.483'	62° 0.483'
Helispot	H-45	62° 0.122'	62° 0.122'
Helispot	H-5	61° 59.270'	61° 59.270'
Helispot	H-80	61° 57.597'	61° 57.597'
Sling Site		61° 56.033'	61° 56.033'
Spot Fire		62° 00.834' N	150° 03.811' W
Staging Area	Sheep Creek Staging	61° 59.507'	61° 59.507'
Staging Area	Structure Group Staging	61° 57.862'	61° 57.862'
Water Source		61° 59.782'	61° 59.782'
Water Source		61° 55.423'	61° 55.423'
Water Source		61° 59.495'	61° 59.495'
Water Source		61° 59.782'	61° 59.782'
Water Source		61° 55.423'	61° 55.423'
Water Source		61° 57.944'	61° 57.944'



**Legend**

- Drop Point
- Staging Area
- Helispot
- ▲ Sling Site
- ▲ Spot Fire
- Water Source
- X Division Break
- Railroad
- Aerial Hazard
- Temporary Flight Restriction
- Highways

0 0.5 1 Miles  
AKSP Zone 4 - NAD 83