

McKinley Fire  
 AK-MSS-901738  
 Operations Map  
 DIV K  
 8/29/2019  
 Approx. Acres 3,316



**DIV V**

**DIV D**

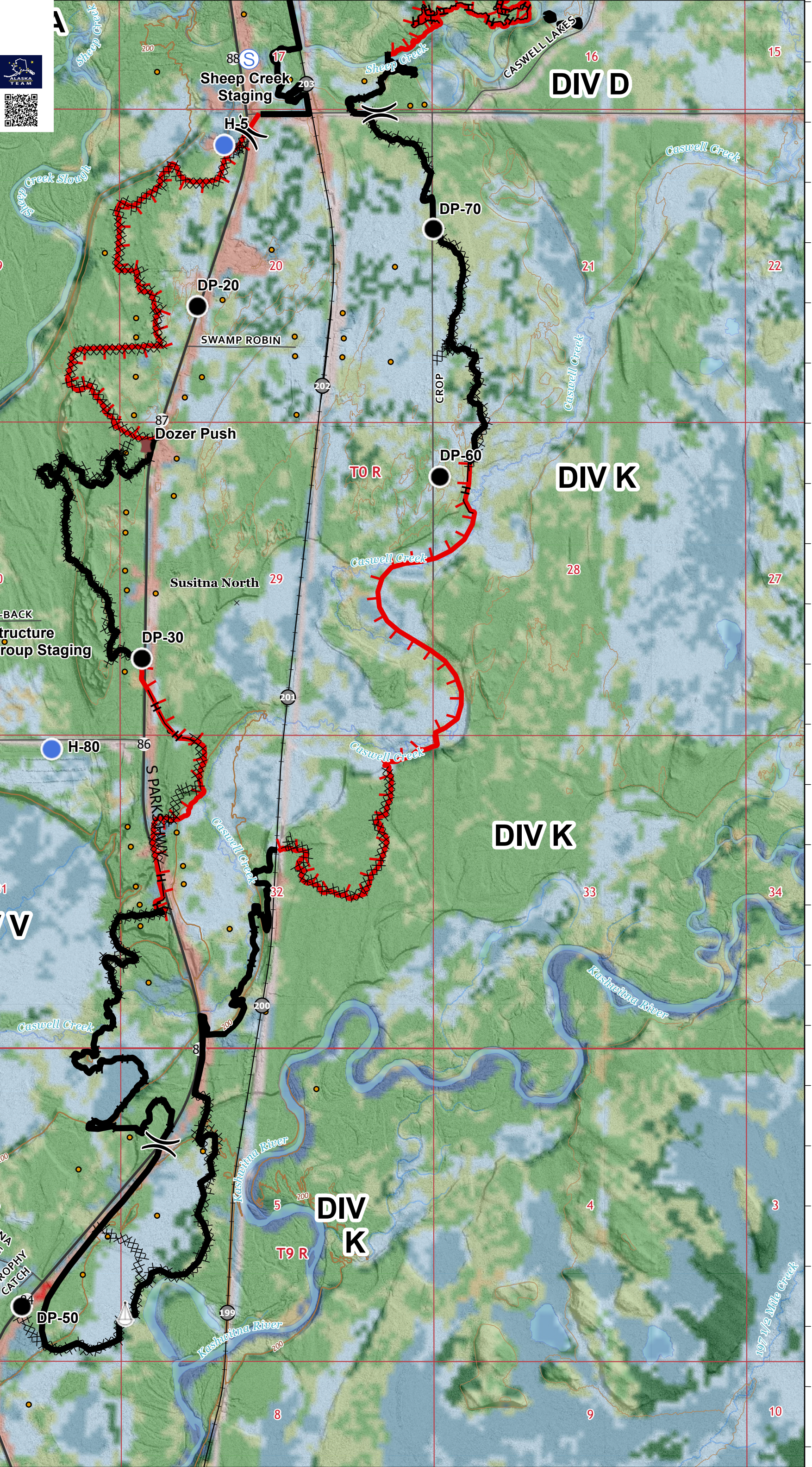
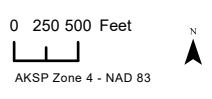
**DIV K**

**DIV K**

**DIV V**

**DIV K**

- Drop Point
- Dozer Push
- ⊙ Staging Area
- Helispot
- ▲ Sling Site
- ⊕ Water Source
- ⌘ Division Break
- ▬ Uncontrolled Fire Edge
- ▬ Completed Line
- ⊕ Completed Hand Line
- ⊗ Completed Dozer Line
- Road Mileposts
- ⊕ Railroad
- Railroad Mileposts
- Other Roads
- Highways



61°59'40" 61°59'30" 61°59'20" 61°59'10" 61°59' 61°58'50" 61°58'40" 61°58'30" 61°58'20" 61°58'10" 61°58' 61°57'50" 61°57'40" 61°57'30" 61°57'20" 61°57'10" 61°57' 61°56'50" 61°56'40" 61°56'30" 61°56'20" 61°56'10" 61°56' 61°55'50" 61°55'40"

-150°5'10" -150°4'50" -150°4'30" -150°4'10" -150°3'50" -150°3'30" -150°3'10" -150°2'50" -150°2'30" -150°2'10" -150°1'50" -150°1'30" -150°1'10" -150°0'50" -150°0'30" -150°0'10" -149°59'50"