

Aviation Map



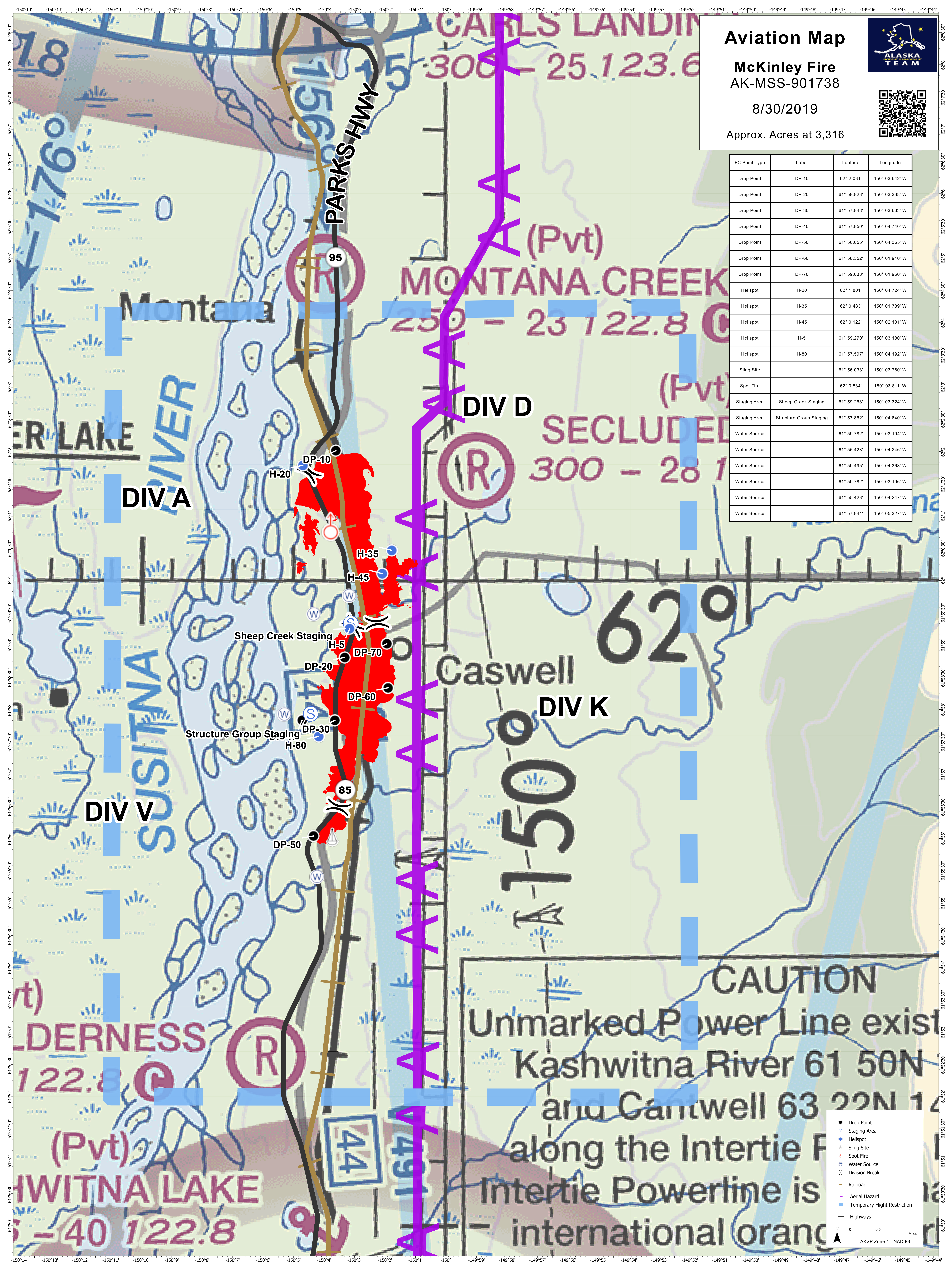
McKinley Fire
AK-MSS-901738

8/30/2019

Approx. Acres at 3,316



FC Point Type	Label	Latitude	Longitude
Drop Point	DP-10	62° 2.031'	150° 03.642' W
Drop Point	DP-20	61° 58.823'	150° 03.338' W
Drop Point	DP-30	61° 57.848'	150° 03.663' W
Drop Point	DP-40	61° 57.850'	150° 04.740' W
Drop Point	DP-50	61° 56.055'	150° 04.365' W
Drop Point	DP-60	61° 58.352'	150° 01.910' W
Drop Point	DP-70	61° 59.038'	150° 01.950' W
Helispot	H-20	62° 1.801'	150° 04.724' W
Helispot	H-35	62° 0.483'	150° 01.789' W
Helispot	H-45	62° 0.122'	150° 02.101' W
Helispot	H-5	61° 59.270'	150° 03.180' W
Helispot	H-80	61° 57.597'	150° 04.192' W
Sling Site		61° 56.033'	150° 03.760' W
Spot Fire		62° 0.834'	150° 03.811' W
Staging Area	Sheep Creek Staging	61° 59.268'	150° 03.324' W
Staging Area	Structure Group Staging	61° 57.862'	150° 04.640' W
Water Source		61° 59.782'	150° 03.194' W
Water Source		61° 55.423'	150° 04.246' W
Water Source		61° 59.495'	150° 04.363' W
Water Source		61° 59.782'	150° 03.196' W
Water Source		61° 55.423'	150° 04.247' W
Water Source		61° 57.944'	150° 05.327' W



Legend

- Drop Point
- Staging Area
- Helispot
- ▲ Sling Site
- ▲ Spot Fire
- Water Source
- X Division Break
- Railroad
- Aerial Hazard
- Temporary Flight Restriction
- Highways

0 0.5 1 Miles
AKSP Zone 4 - NAD 83