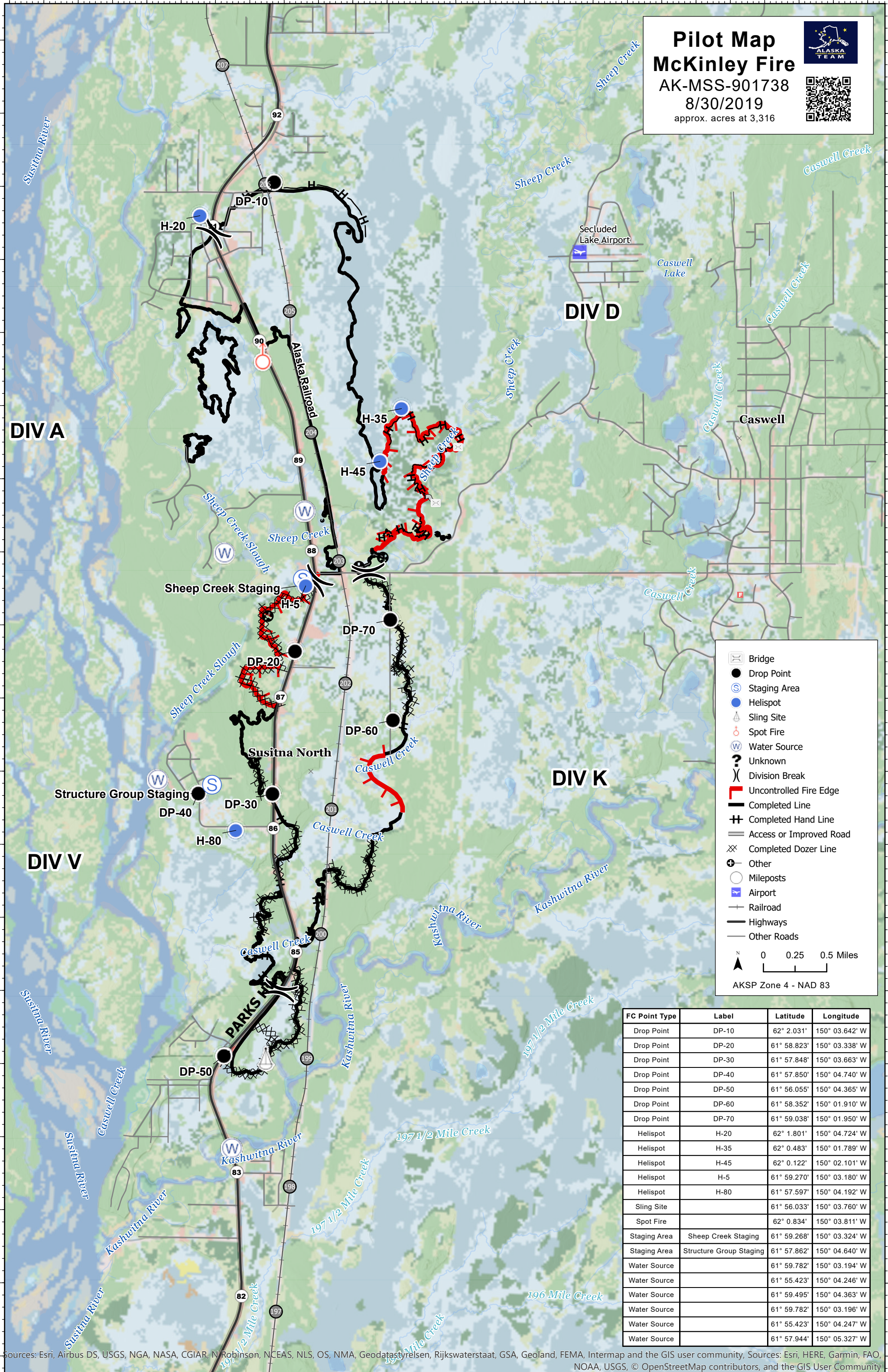


Pilot Map McKinley Fire

AK-MSS-901738
8/30/2019
approx. acres at 3,316



	Bridge
	Drop Point
	Staging Area
	Helispot
	Sling Site
	Spot Fire
	Water Source
	Unknown
	Division Break
	Uncontrolled Fire Edge
	Completed Line
	Completed Hand Line
	Access or Improved Road
	Completed Dozer Line
	Other
	Mileposts
	Airport
	Railroad
	Highways
	Other Roads

0 0.25 0.5 Miles
AKSP Zone 4 - NAD 83

FC Point Type	Label	Latitude	Longitude
Drop Point	DP-10	62° 2.031'	150° 03.642' W
Drop Point	DP-20	61° 58.823'	150° 03.338' W
Drop Point	DP-30	61° 57.848'	150° 03.663' W
Drop Point	DP-40	61° 57.850'	150° 04.740' W
Drop Point	DP-50	61° 56.055'	150° 04.365' W
Drop Point	DP-60	61° 58.352'	150° 01.910' W
Drop Point	DP-70	61° 59.038'	150° 01.950' W
Helispot	H-20	62° 1.801'	150° 04.724' W
Helispot	H-35	62° 0.483'	150° 01.789' W
Helispot	H-45	62° 0.122'	150° 02.101' W
Helispot	H-5	61° 59.270'	150° 03.180' W
Helispot	H-80	61° 57.597'	150° 04.192' W
Sling Site		61° 56.033'	150° 03.760' W
Spot Fire		62° 0.834'	150° 03.811' W
Staging Area	Sheep Creek Staging	61° 59.268'	150° 03.324' W
Staging Area	Structure Group Staging	61° 57.862'	150° 04.640' W
Water Source		61° 59.782'	150° 03.194' W
Water Source		61° 55.423'	150° 04.246' W
Water Source		61° 59.495'	150° 04.363' W
Water Source		61° 59.782'	150° 03.196' W
Water Source		61° 55.423'	150° 04.247' W
Water Source		61° 57.944'	150° 05.327' W

Sources: Esri, Airbus DS, USGS, NGA, NASA, CGIAR, N Robinson, NCEAS, NLS, OS, NMA, Geodatastyrelsen, Rijkswaterstaat, GSA, Geoland, FEMA, Intermap and the GIS user community, Sources: Esri, HERE, Garmin, FAO, NOAA, USGS, © OpenStreetMap contributors, and the GIS User Community