

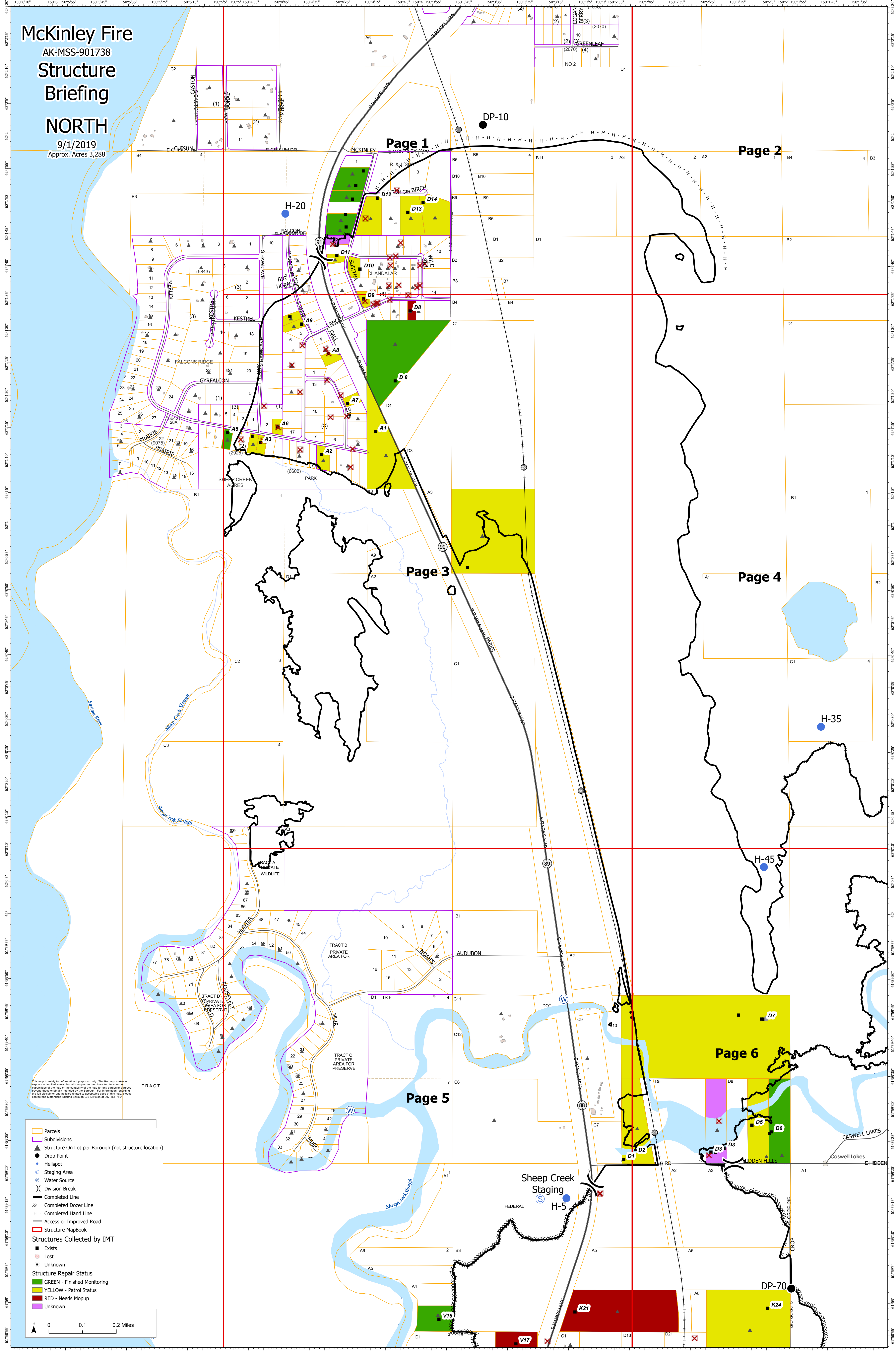
# McKinley Fire

AK-MSS-901738

## Structure Briefing

### NORTH

9/1/2019  
Approx. Acres 3,288



**Parcels**  
Subdivisions  
Structure On Lot per Borough (not structure location)  
Drop Point  
Helispot  
Staging Area  
Water Source  
Division Break  
Completed Line  
Completed Dozer Line  
Completed Hand Line  
Access or Improved Road  
Structure MapBook

**Structures Collected by IMT**  
Exists  
Lost  
Unknown

**Structure Repair Status**  
GREEN - Finished Monitoring  
YELLOW - Patrol Status  
RED - Needs Mopup  
Unknown

0 0.1 0.2 Miles

This map is solely for informational purposes only. The Borough makes no express or implied warranties with respect to the character, function, or use of the map or the suitability of the map for any particular purpose beyond those originally intended by the Borough. For information regarding the full disclaimer and policies please refer to applicable areas of this map. Please contact the Matanuska-Susitna Borough GIS Division at 907-981-1700.