

# McKinley Fire

AK-MSS-901738

## Structure Briefing

### SOUTH

9/02/2019  
Approx. Acres 3,288



**Legend**

- ✗ Lost Structures per Borough
- ▭ Parcels
- ▭ Subdivisions
- ▲ Structure On Lot per Borough (not structure location)
- Drop Point
- Dozer Push
- Helispot
- Sling Site
- Staging Area
- Water Source
- Division Break
- Completed Line
- Completed Dozer Line
- H · Completed Hand Line
- ▭ Structure MapBook

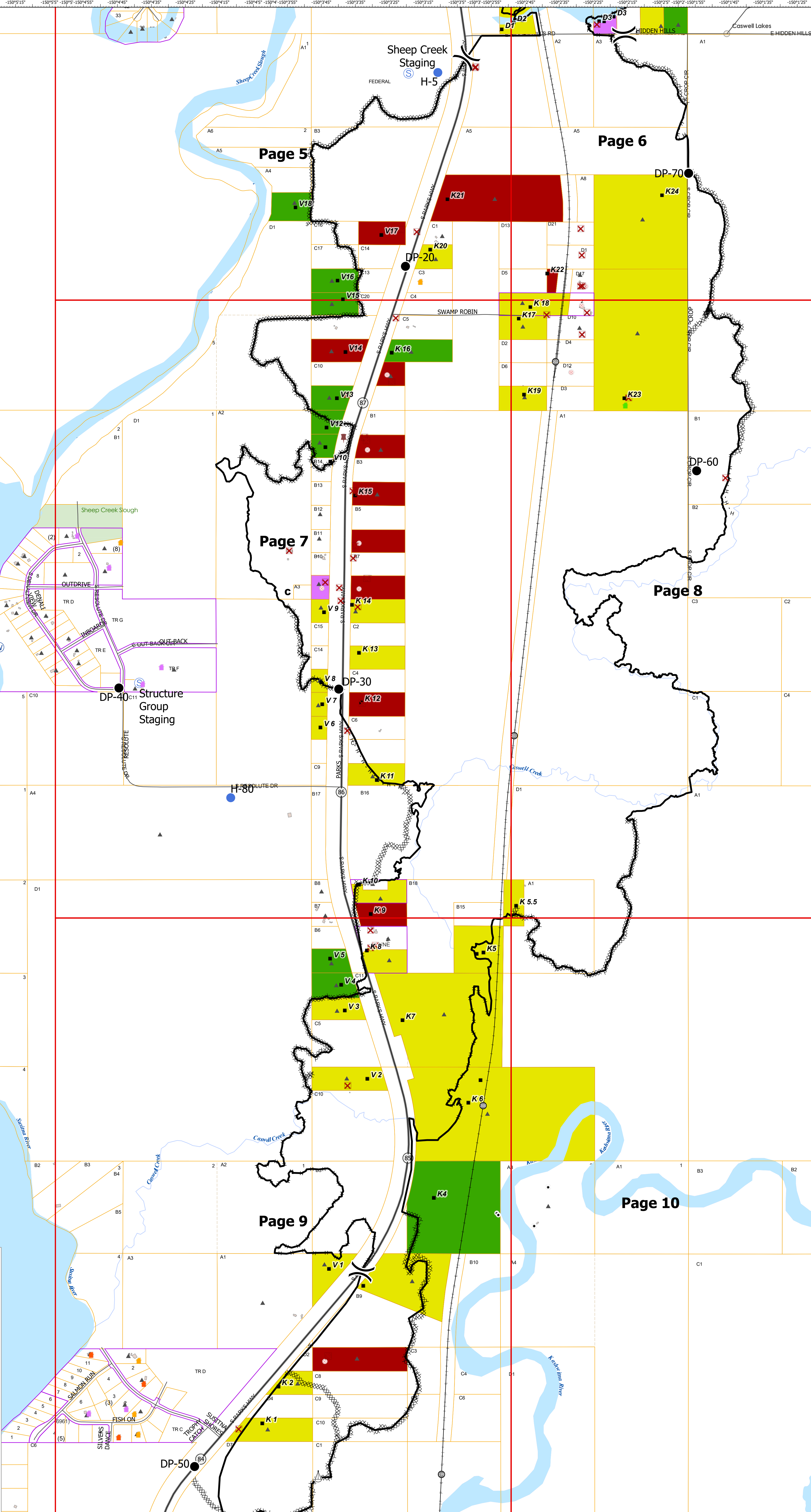
**Structures Collected by IMT**

- Exists
- Lost
- Unknown

**Structure Repair Status by IMT**

- GREEN - Finished Monitoring
- YELLOW - Patrol Status
- RED - Needs Mopup
- Unknown

0 0.1 0.2 Miles



This map is solely for informational purposes only. The Borough makes no express or implied warranties with respect to the character, function, or accuracy of the map or the availability of the map for any particular purpose beyond those originally intended by the Borough. For information regarding the full disclaimer and policies please refer to applicable laws of this state. Please contact the Matanuska-Susitna Borough GIS Division at 907-981-1701.