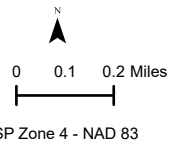


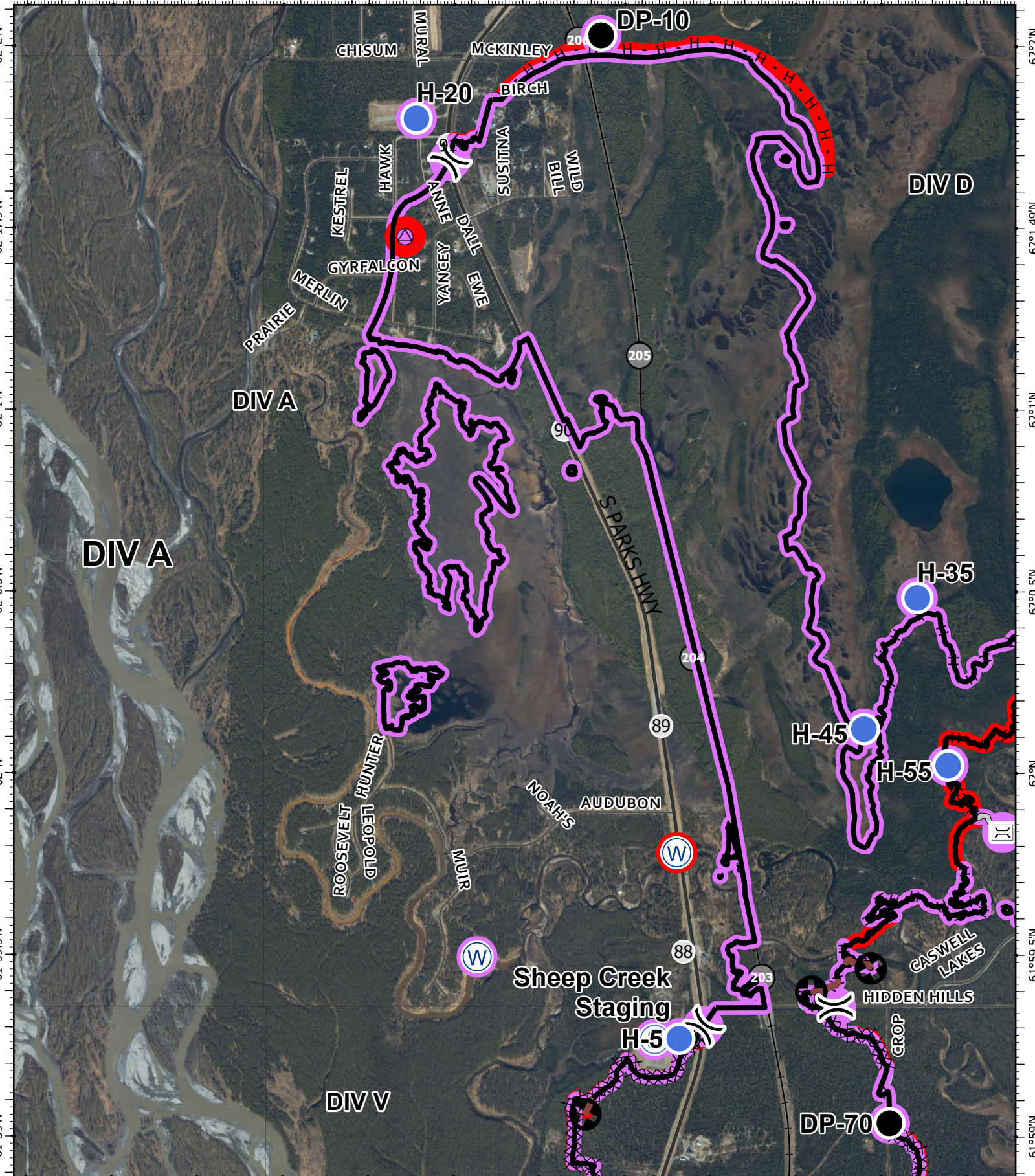
**Suppression Repair**  
**McKinley Fire**  
 AK-MSS-901738  
 9/2/2019

**DIV A**

- |                |                        |                           |                      |               |
|----------------|------------------------|---------------------------|----------------------|---------------|
| ⊠ Bridge       | ⊙ Water Source         | — Access or Improved Road | ⬢ No Repair Needed   | — Railroad    |
| ● Drop Point   | ) Division Break       | ⊙ Other                   | ⬢ Unknown            | — Highways    |
| • Helispot     | — Completed Line       | ● Repair Needed           | ○ Road Mileposts     | — Other Roads |
| ⊙ Repair Point | ⊗ Completed Dozer Line | ● Unknown                 | ● Railroad Mileposts | DIV_Arcs      |
| ⊙ Staging Area | H Completed Hand Line  | ● Repair Needed           |                      |               |



150°7'W 150°6.5'W 150°6.01'W 150°5.5'W 150°5'W 150°4.5'W 150°4'W 150°3.5'W 150°3'W 150°2.5'W 150°2'W 150°1.5'W



150°7'W 150°6.5'W 150°6.01'W 150°5.5'W 150°5'W 150°4.5'W 150°4'W 150°3.5'W 150°3'W 150°2.5'W 150°2'W 150°1.5'W

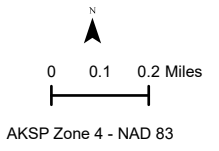
62°2'N  
62°1'N  
62°0.5'N  
62°N  
61°59.5'N  
61°59'N

62°2'N  
62°1'N  
62°0.5'N  
62°N  
61°59.5'N  
61°59'N

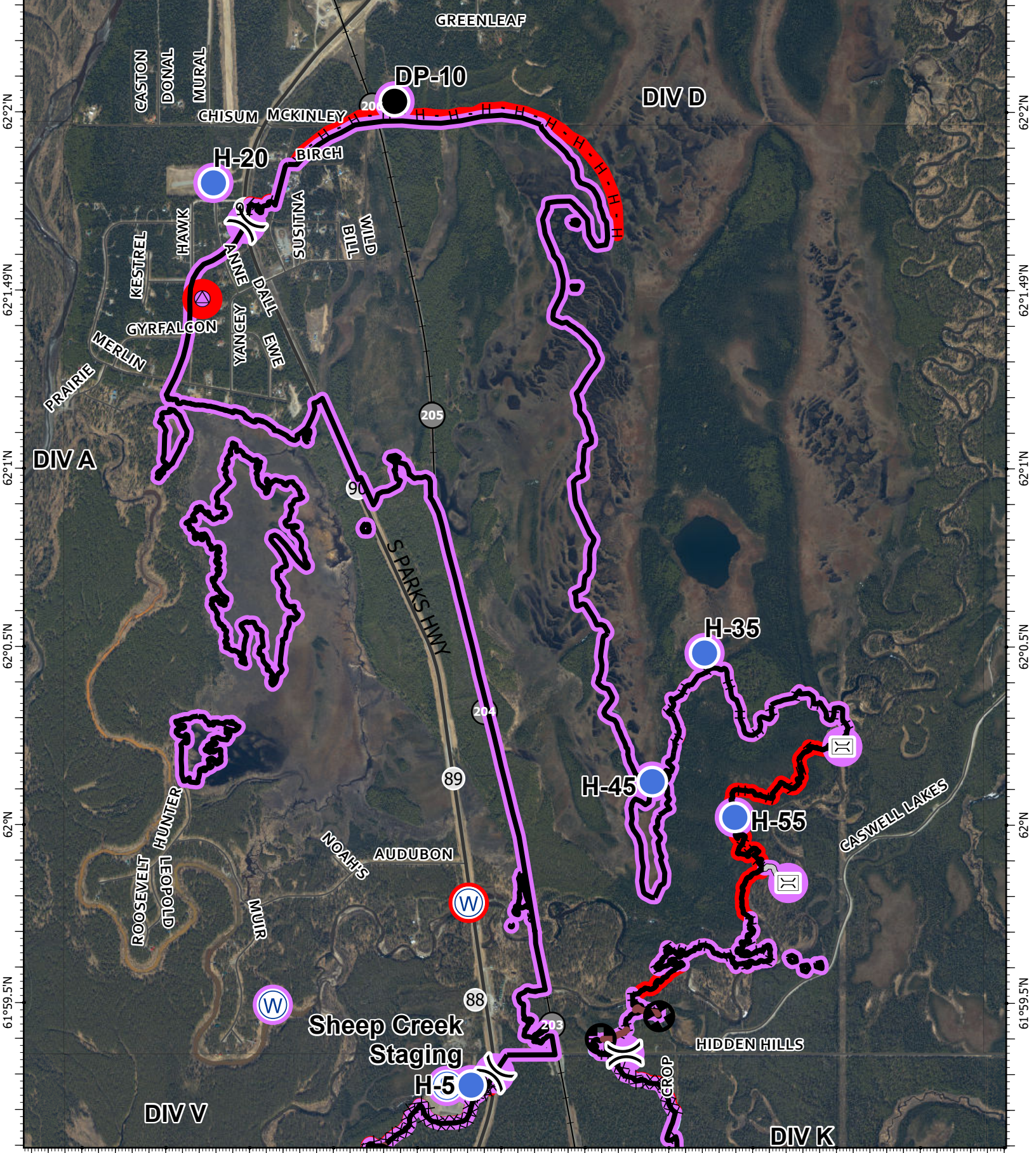
**Suppression Repair**  
 McKinley Fire  
 AK-MSS-901738  
 9/2/2019

**DIV D**

- |                |                        |                           |                      |               |
|----------------|------------------------|---------------------------|----------------------|---------------|
| ⊠ Bridge       | ⊙ Water Source         | — Access or Improved Road | ⬢ No Repair Needed   | — Railroad    |
| ● Drop Point   | ) Division Break       | ⊙ Other                   | ⬢ Unknown            | — Highways    |
| • Helispot     | — Completed Line       | ● Repair Needed           | ○ Road Mileposts     | — Other Roads |
| ⊙ Repair Point | ⊗ Completed Dozer Line | ● Unknown                 | ○ Railroad Mileposts | DIV_Arcs      |
| ⊙ Staging Area | H Completed Hand Line  | ● Repair Needed           |                      |               |



150°5.5'W 150°5'W 150°4.5'W 150°4'W 150°3.5'W 150°3'W 150°2.5'W 150°2'W 150°1.5'W 150°1'W 150°0.5'W 150°W

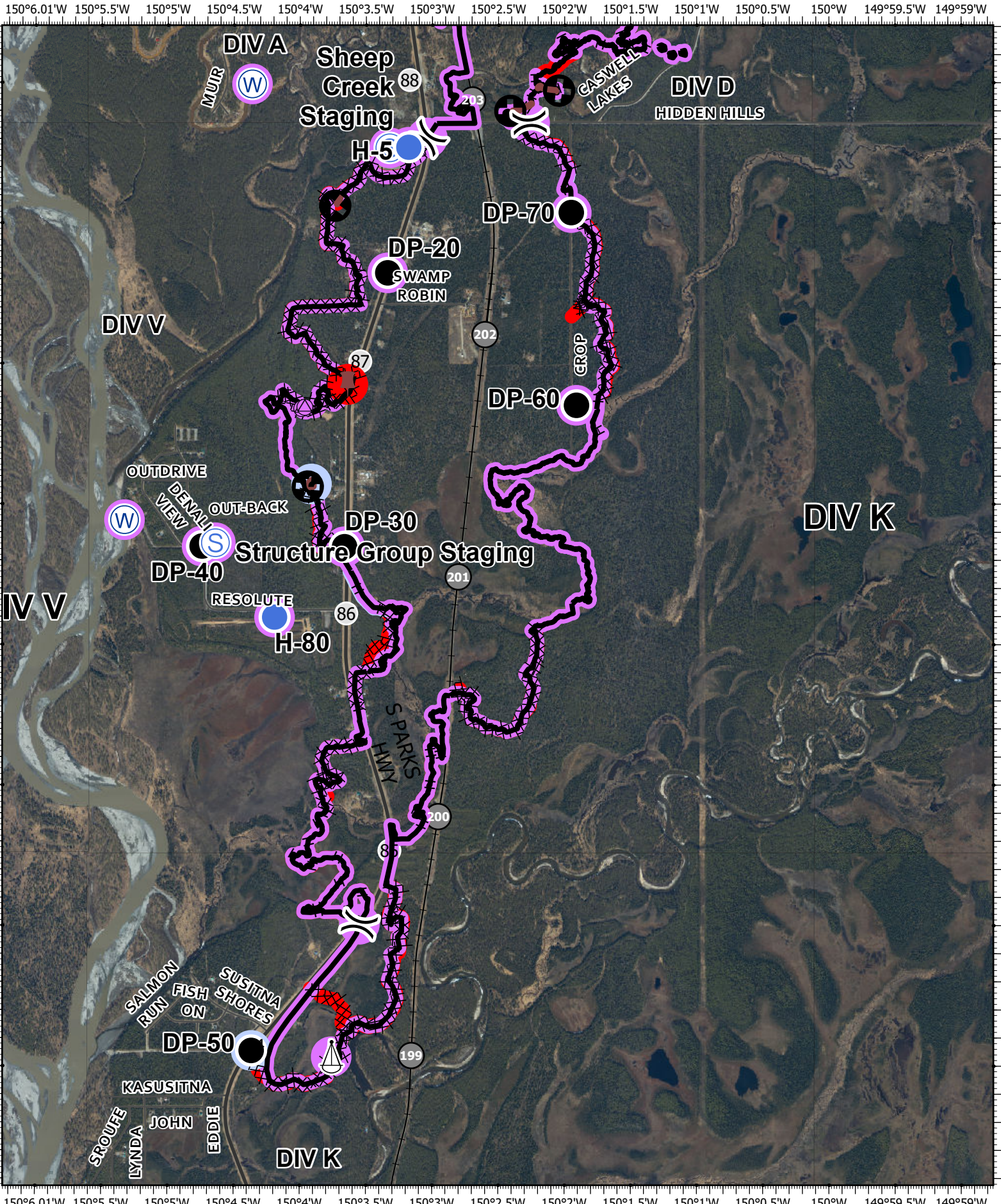


150°5.5'W 150°5'W 150°4.5'W 150°4'W 150°3.5'W 150°3'W 150°2.5'W 150°2'W 150°1.5'W 150°1'W 150°0.5'W 150°W

**Suppression Repair**  
 McKinley Fire  
 AK-MSS-901738  
 9/2/2019

**DIV K**

- |                |                  |                        |                    |                      |                               |
|----------------|------------------|------------------------|--------------------|----------------------|-------------------------------|
| ● Drop Point   | ⊙ Staging Area   | — Completed Line       | ● Repair Needed    | ▭ No Repair Needed   | — Railroad                    |
| ■ Dozer Push   | ⊙ Water Source   | ⊗ Completed Dozer Line | ● No Repair Needed | ▭ Unknown            | — Highways                    |
| ● Helispot     | ? Unknown        | H Completed Hand Line  | ● Unknown          | ● Road Mileposts     | — Other Roads                 |
| ⊙ Repair Point | ) Division Break | ⊕ Other                | ● Repair Needed    | ● Railroad Mileposts | DIV_Arcs AKSP Zone 4 - NAD 83 |
| ⊙ Sling Site   |                  |                        |                    |                      |                               |



**Suppression Repair**  
 McKinley Fire  
 AK-MSS-901738  
 9/2/2019

**DIV V**

- Drop Point
- Dozer Push
- Helispot
- ⊗ Repair Point
- ⊙ Staging Area
- ⊙ Water Source
- ⊙ Unknown
- ⊗ Division Break
- Completed Line

- ⊗ Completed Dozer Line
- H Completed Hand Line
- ⊗ Other
- Repair Needed

- No Repair Needed
- Unknown
- Unknown
- Unknown

- Repair Needed
- No Repair Needed

- Unknown
- Road Mileposts
- Railroad Mileposts

- Railroad
- Highways
- Other Roads



0 0.1 0.2 Miles

DIV\_Arcs AKSP Zone 4 - NAD 83

