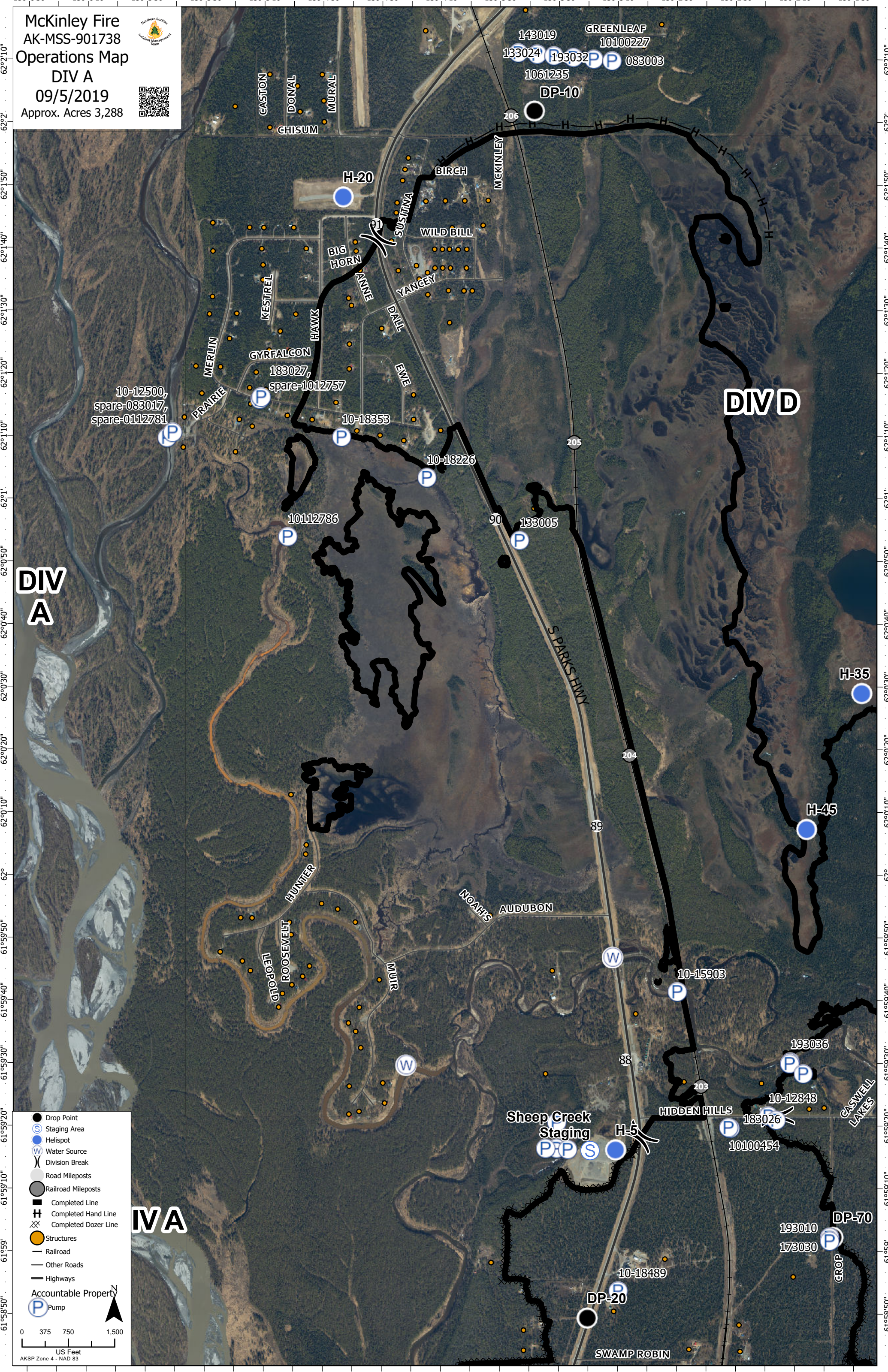


McKinley Fire
 AK-MSS-901738
 Operations Map
 DIV A
 09/5/2019
 Approx. Acres 3,288

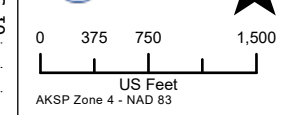


DIV A

DIV D

- Drop Point
- ⊙ Staging Area
- Helispot
- ⊙ Water Source
- ⌘ Division Break
- ⊙ Road Mileposts
- ⊙ Railroad Mileposts
- Completed Line
- Completed Hand Line
- ⌘ Completed Dozer Line
- Structures
- Railroad
- Other Roads
- Highways
- Accountable Property
- ⊙ Pump

DIV A



-150°6'30" -150°6'10" -150°5'50" -150°5'30" -150°5'10" -150°4'50" -150°4'30" -150°4'10" -150°3'50" -150°3'30" -150°3'10" -150°2'50" -150°2'30" -150°2'10" -150°1'50"

62°2'10"
62°2'
62°1'50"
62°1'40"
62°1'30"
62°1'20"
62°1'10"
62°1'
62°0'50"
62°0'40"
62°0'30"
62°0'20"
62°0'10"
62°0'
61°59'50"
61°59'40"
61°59'30"
61°59'20"
61°59'10"
61°59'
61°58'50"

62°2'10"
62°2'
62°1'50"
62°1'40"
62°1'30"
62°1'20"
62°1'10"
62°1'
62°0'50"
62°0'40"
62°0'30"
62°0'20"
62°0'10"
62°0'
61°59'50"
61°59'40"
61°59'30"
61°59'20"
61°59'10"
61°59'
61°58'50"