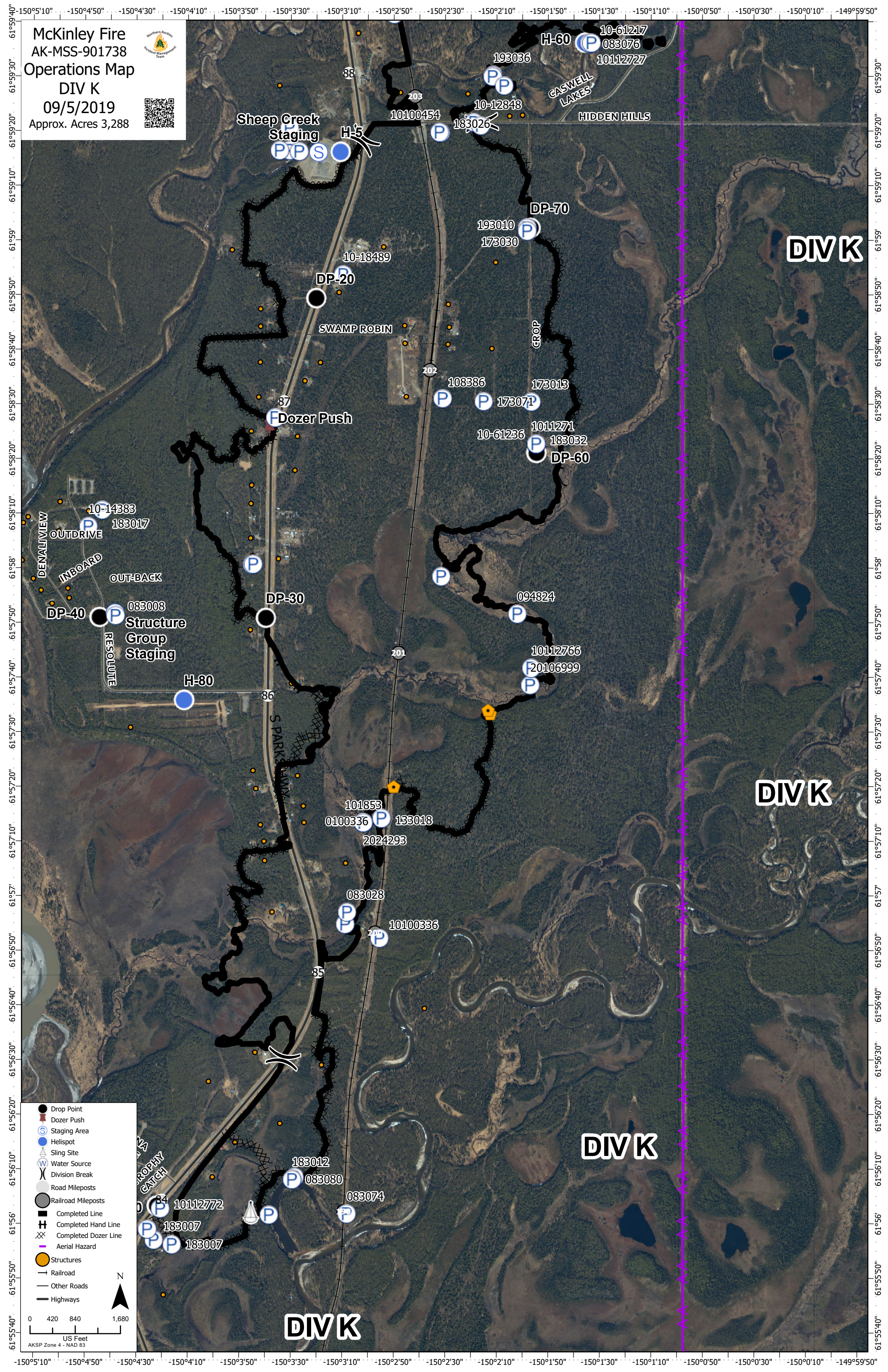


McKinley Fire  
 AK-MSS-901738  
 Operations Map  
 DIV K  
 09/5/2019  
 Approx. Acres 3,288



**DIV K**

**DIV K**

**DIV K**

**DIV K**

- Drop Point
- Dozer Push
- Staging Area
- Helispot
- Sling Site
- Water Source
- Division Break
- Road Mileposts
- Railroad Mileposts
- Completed Line
- Completed Hand Line
- Completed Dozer Line
- Aerial Hazard
- Structures
- Railroad
- Other Roads
- Highways

0 420 840 1,680  
 US Feet  
 AKSP Zone 4 - NAD 83

Map labels include: Sheep Creek Staging, SWAMP ROBIN, Dozer Push, Structure Group Staging, CASWELL LAKES, HIDDEN HILLS, DENALIVIEW, OUTDRIVE, INBOARD, OUT-BACK, RESOLUTE, S PARK, PROPHY CATCH, and various drop point codes (DP-20, DP-30, DP-40, DP-60, DP-70) and helispot codes (H-5, H-80).