

Aviation Map



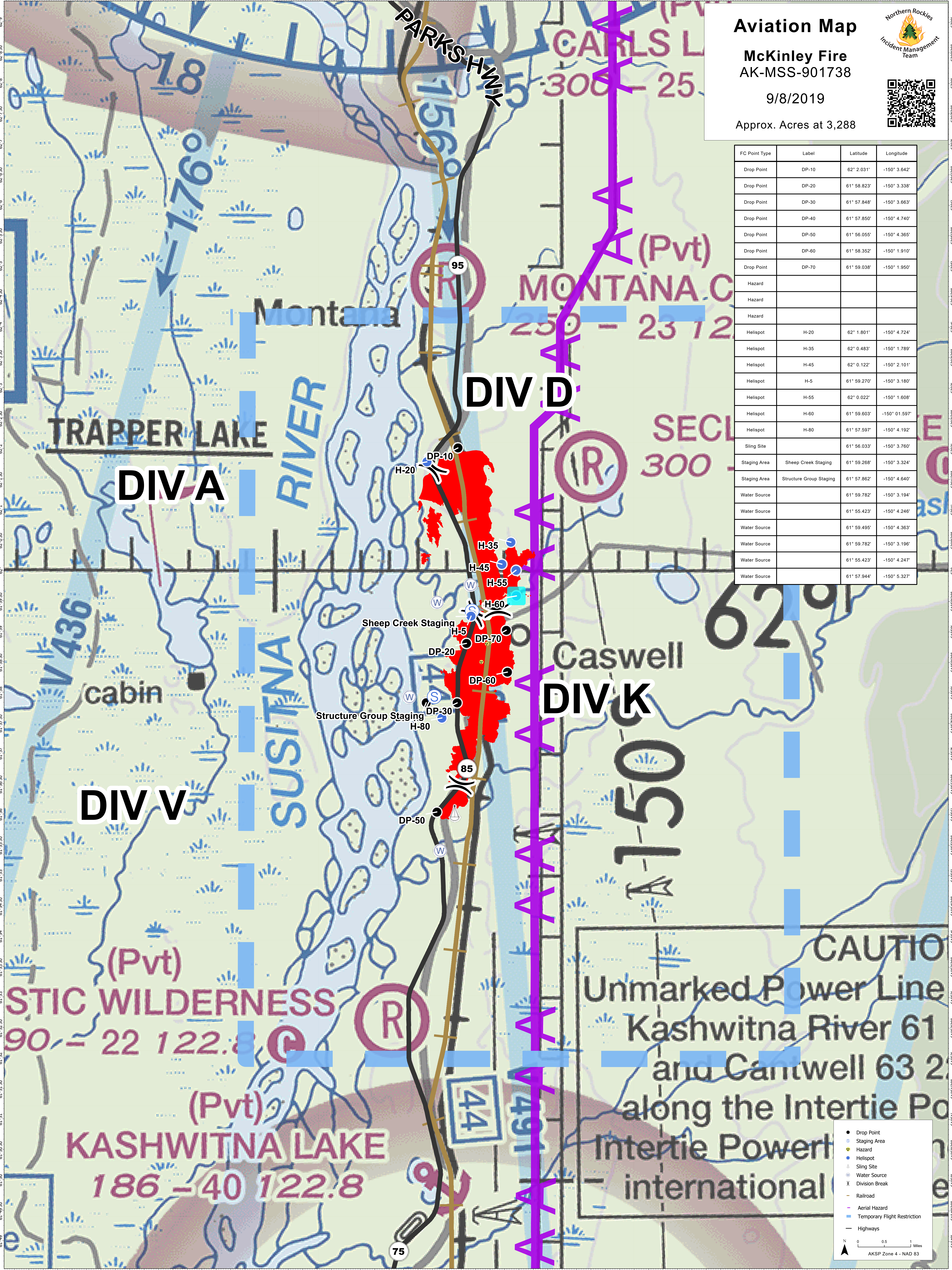
McKinley Fire
AK-MSS-901738

9/8/2019

Approx. Acres at 3,288



FC Point Type	Label	Latitude	Longitude
Drop Point	DP-10	62° 2.031'	-150° 3.642'
Drop Point	DP-20	61° 58.823'	-150° 3.338'
Drop Point	DP-30	61° 57.848'	-150° 3.663'
Drop Point	DP-40	61° 57.850'	-150° 4.740'
Drop Point	DP-50	61° 56.055'	-150° 4.365'
Drop Point	DP-60	61° 58.352'	-150° 1.910'
Drop Point	DP-70	61° 59.038'	-150° 1.950'
Hazard			
Hazard			
Hazard			
Helispot	H-20	62° 1.801'	-150° 4.724'
Helispot	H-35	62° 0.483'	-150° 1.789'
Helispot	H-45	62° 0.122'	-150° 2.101'
Helispot	H-5	61° 59.270'	-150° 3.180'
Helispot	H-55	62° 0.022'	-150° 1.608'
Helispot	H-60	61° 59.603'	-150° 01.597'
Helispot	H-80	61° 57.597'	-150° 4.192'
Sling Site		61° 56.033'	-150° 3.760'
Staging Area	Sheep Creek Staging	61° 59.268'	-150° 3.324'
Staging Area	Structure Group Staging	61° 57.862'	-150° 4.640'
Water Source		61° 59.782'	-150° 3.194'
Water Source		61° 55.423'	-150° 4.246'
Water Source		61° 59.495'	-150° 4.363'
Water Source		61° 59.782'	-150° 3.196'
Water Source		61° 55.423'	-150° 4.247'
Water Source		61° 57.944'	-150° 5.327'



DIV A

DIV D

DIV K

DIV V

● Drop Point
○ Staging Area
▲ Hazard
● Helispot
▲ Sling Site
○ Water Source
X Division Break
— Railroad
— Aerial Hazard
— Temporary Flight Restriction
— Highways

0 0.5 1 Miles
 AKSP Zone 4 - NAD 83