

Aviation Map



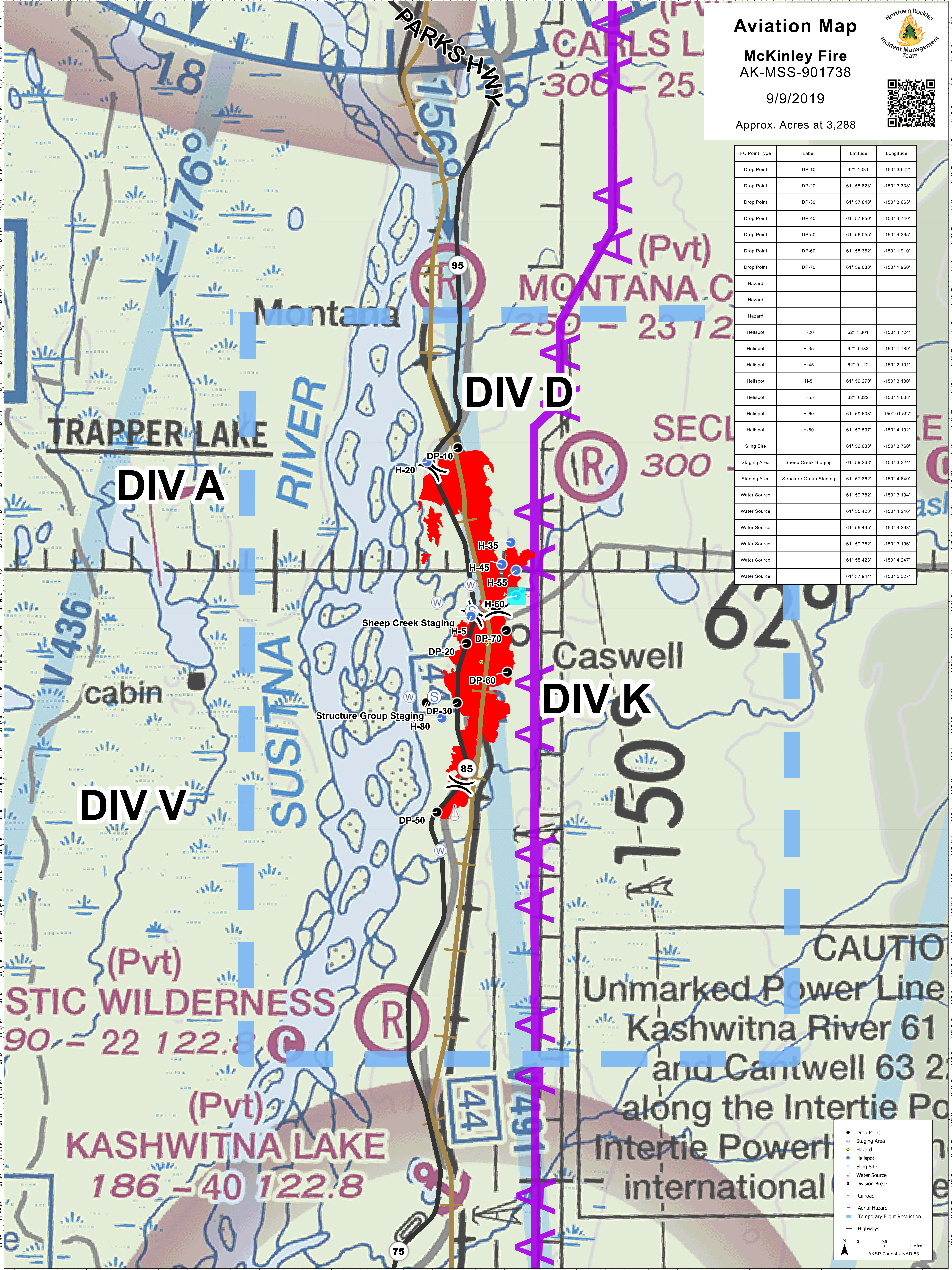
McKinley Fire
AK-MSS-901738

9/9/2019

Approx. Acres at 3,288



| FC Point Type | Label | Latitude | Longitude |
|---------------|-------------------------|-------------|---------------|
| Drop Point | DP-10 | 62° 2.031' | -150° 3.642' |
| Drop Point | DP-20 | 61° 58.823' | -150° 3.338' |
| Drop Point | DP-30 | 61° 57.848' | -150° 3.663' |
| Drop Point | DP-40 | 61° 57.850' | -150° 4.740' |
| Drop Point | DP-50 | 61° 56.055' | -150° 4.365' |
| Drop Point | DP-60 | 61° 58.352' | -150° 1.910' |
| Drop Point | DP-70 | 61° 59.038' | -150° 1.950' |
| Hazard | | | |
| Hazard | | | |
| Hazard | | | |
| Helispot | H-20 | 62° 1.801' | -150° 4.724' |
| Helispot | H-35 | 62° 0.483' | -150° 1.789' |
| Helispot | H-45 | 62° 0.122' | -150° 2.101' |
| Helispot | H-5 | 61° 59.270' | -150° 3.180' |
| Helispot | H-55 | 62° 0.022' | -150° 1.608' |
| Helispot | H-60 | 61° 59.603' | -150° 01.597' |
| Helispot | H-80 | 61° 57.597' | -150° 4.192' |
| Sling Site | | 61° 56.033' | -150° 3.760' |
| Staging Area | Sheep Creek Staging | 61° 59.268' | -150° 3.324' |
| Staging Area | Structure Group Staging | 61° 57.862' | -150° 4.640' |
| Water Source | | 61° 59.782' | -150° 3.194' |
| Water Source | | 61° 55.423' | -150° 4.246' |
| Water Source | | 61° 59.495' | -150° 4.363' |
| Water Source | | 61° 59.782' | -150° 3.196' |
| Water Source | | 61° 55.423' | -150° 4.247' |
| Water Source | | 61° 57.944' | -150° 5.327' |



DIV A

DIV D

DIV K

DIV V

● Drop Point
 ● Staging Area
 ● Hazard
 ● Helispot
 ● Sling Site
 ● Water Source
 X Division Break
 - Railroad
 - Aerial Hazard
 - Temporary Flight Restriction
 - Highways

0 0.5 1 Miles
 AKSP Zone 4 - NAD 83