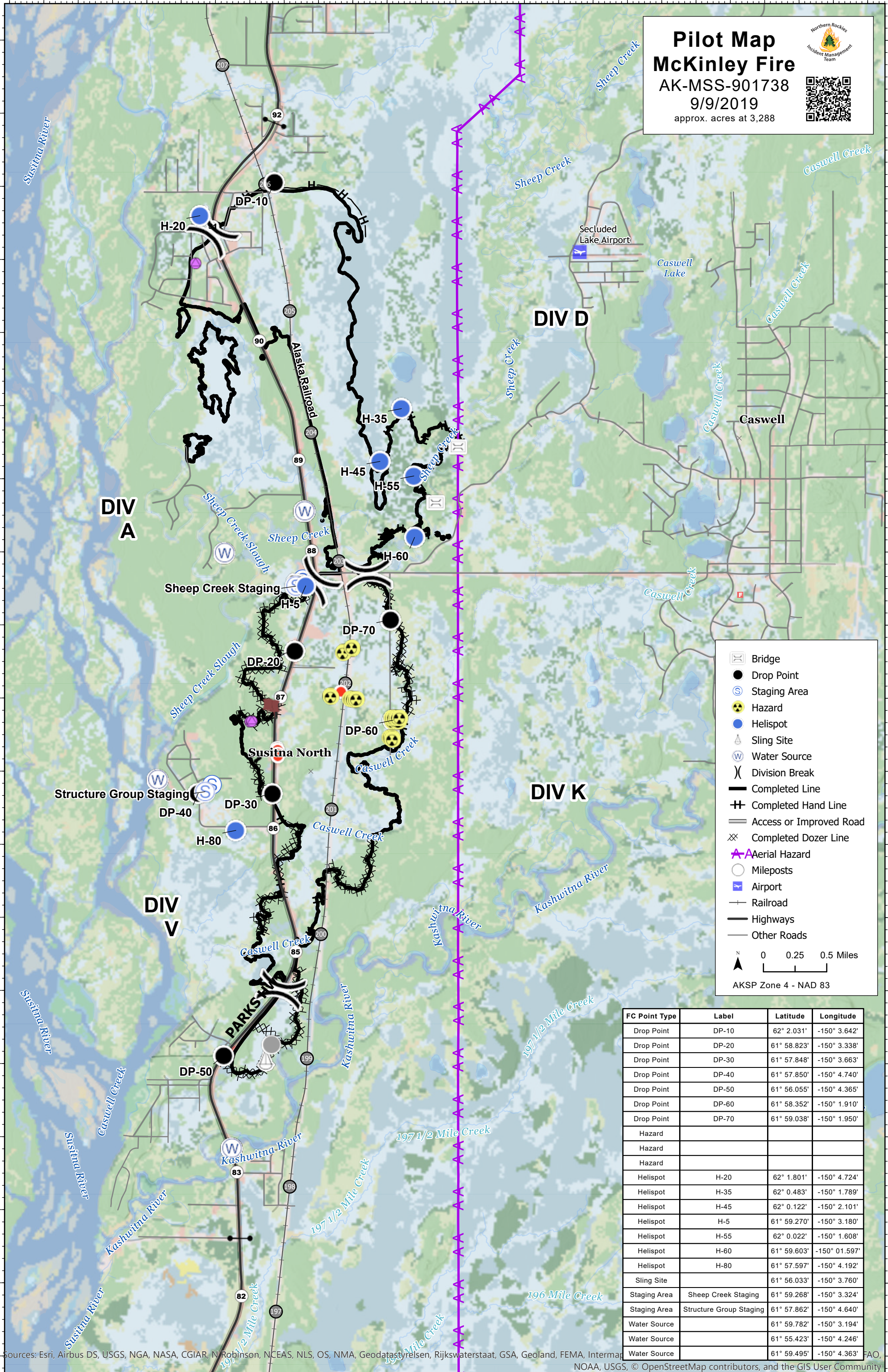


# Pilot Map

## McKinley Fire

AK-MSS-901738  
9/9/2019  
approx. acres at 3,288





	Bridge
	Drop Point
	Staging Area
	Hazard
	Helispot
	Sling Site
	Water Source
	Division Break
	Completed Line
	Completed Hand Line
	Access or Improved Road
	Completed Dozer Line
	Aerial Hazard
	Mileposts
	Airport
	Railroad
	Highways
	Other Roads

0 0.25 0.5 Miles  
AKSP Zone 4 - NAD 83

FC Point Type	Label	Latitude	Longitude
Drop Point	DP-10	62° 2.031'	-150° 3.642'
Drop Point	DP-20	61° 58.823'	-150° 3.338'
Drop Point	DP-30	61° 57.848'	-150° 3.663'
Drop Point	DP-40	61° 57.850'	-150° 4.740'
Drop Point	DP-50	61° 56.055'	-150° 4.365'
Drop Point	DP-60	61° 58.352'	-150° 1.910'
Drop Point	DP-70	61° 59.038'	-150° 1.950'
Hazard			
Hazard			
Hazard			
Helispot	H-20	62° 1.801'	-150° 4.724'
Helispot	H-35	62° 0.483'	-150° 1.789'
Helispot	H-45	62° 0.122'	-150° 2.101'
Helispot	H-5	61° 59.270'	-150° 3.180'
Helispot	H-55	62° 0.022'	-150° 1.608'
Helispot	H-60	61° 59.603'	-150° 01.597'
Helispot	H-80	61° 57.597'	-150° 4.192'
Sling Site		61° 56.033'	-150° 3.760'
Staging Area	Sheep Creek Staging	61° 59.268'	-150° 3.324'
Staging Area	Structure Group Staging	61° 57.862'	-150° 4.640'
Water Source		61° 59.782'	-150° 3.194'
Water Source		61° 55.423'	-150° 4.246'
Water Source		61° 59.495'	-150° 4.363'