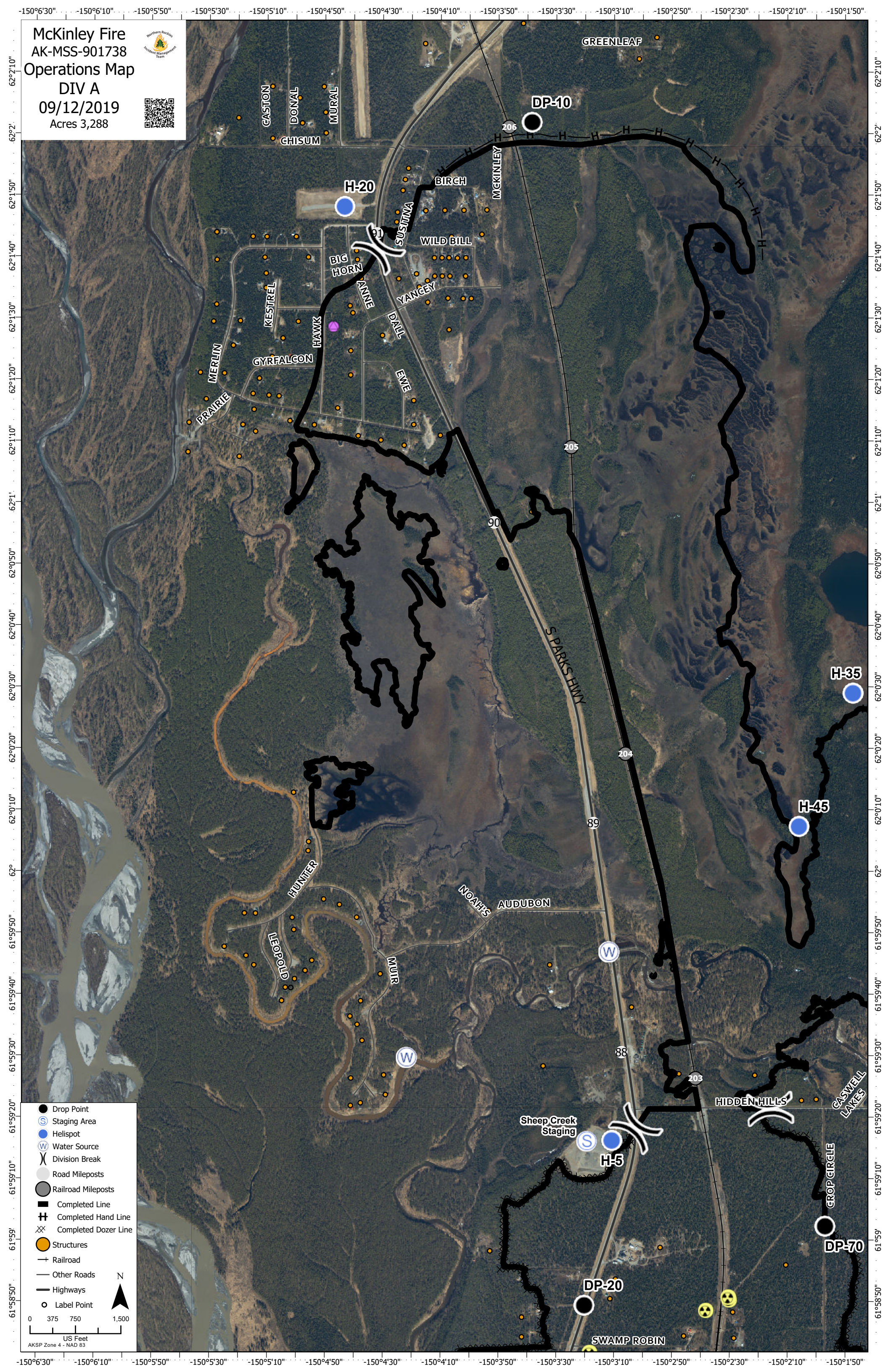
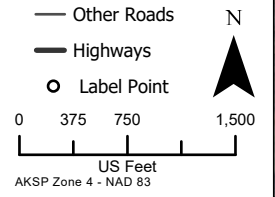


McKinley Fire
 AK-MSS-901738
 Operations Map
 DIV A
 09/12/2019
 Acres 3,288



- Drop Point
- ⊙ Staging Area
- Helispot
- ⊙ Water Source
- ⌘ Division Break
- Road Mileposts
- Railroad Mileposts
- Completed Line
- ⊕ Completed Hand Line
- ⊗ Completed Dozer Line
- Structures
- Railroad
- Other Roads
- Highways
- Label Point



62°10" 62°2" 62°15" 62°14" 62°13" 62°12" 62°11" 62°10" 62°1" 62°0" 62°0'10" 62°0'20" 62°0'30" 62°0'40" 62°0'50" 62°1'0" 62°1'10" 62°1'20" 62°1'30" 62°1'40" 62°1'50" 62°2'0" 62°2'10" 62°2'10"

-150°6'30" -150°6'10" -150°5'50" -150°5'30" -150°5'10" -150°4'50" -150°4'30" -150°4'10" -150°3'50" -150°3'30" -150°3'10" -150°2'50" -150°2'30" -150°2'10" -150°1'50"

-150°6'30" -150°6'10" -150°5'50" -150°5'30" -150°5'10" -150°4'50" -150°4'30" -150°4'10" -150°3'50" -150°3'30" -150°3'10" -150°2'50" -150°2'30" -150°2'10" -150°1'50"

61°58'50" 61°59'0" 61°59'10" 61°59'20" 61°59'30" 61°59'40" 61°59'50" 62°0'0" 62°0'10" 62°0'20" 62°0'30" 62°0'40" 62°0'50" 62°1'0" 62°1'10" 62°1'20" 62°1'30" 62°1'40" 62°1'50" 62°2'0" 62°2'10" 62°2'10"

0 375 750 1,500
 US Feet
 AKSP Zone 4 - NAD 83