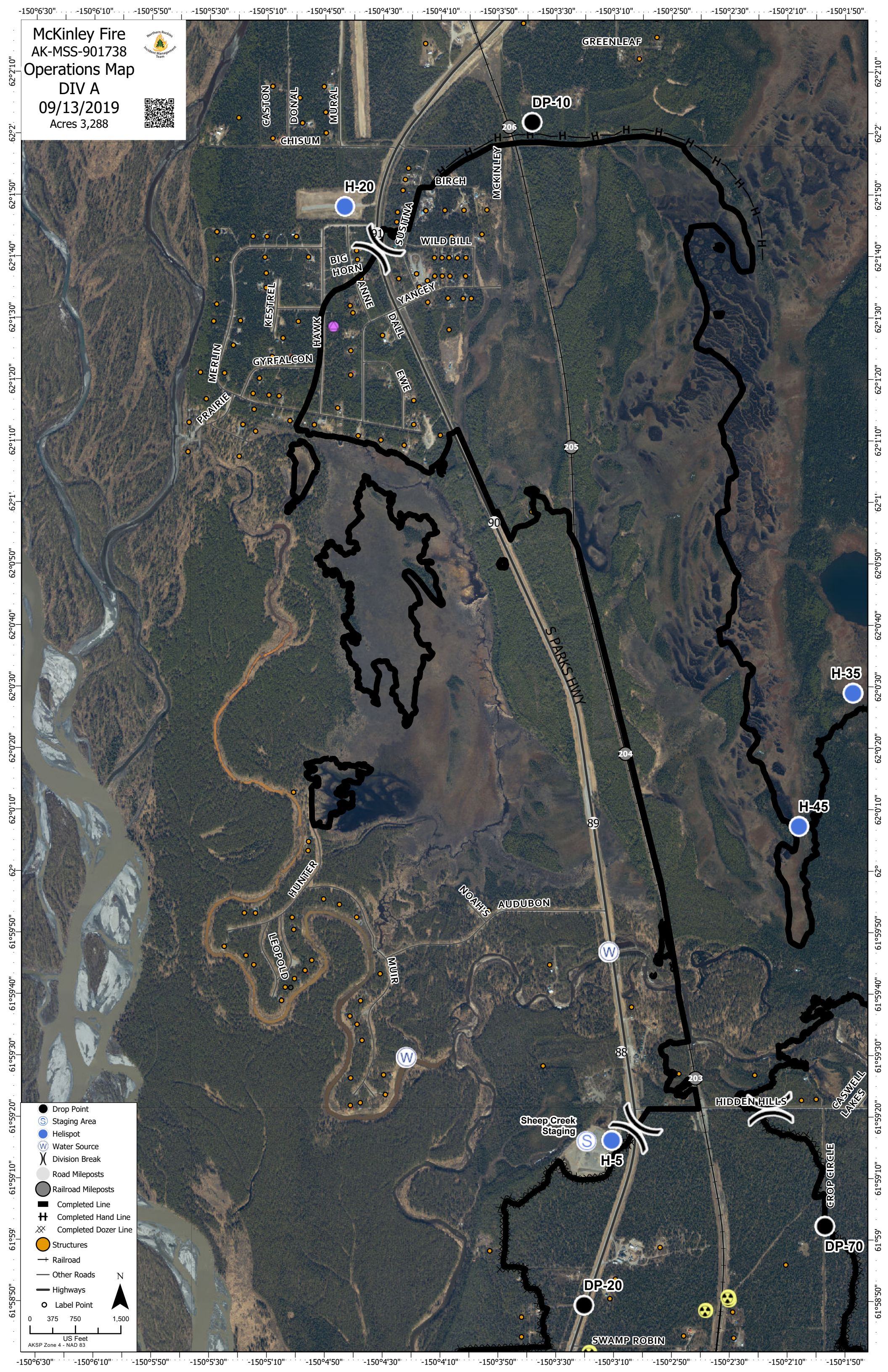


McKinley Fire  
 AK-MSS-901738  
 Operations Map  
 DIV A  
 09/13/2019  
 Acres 3,288



- Drop Point
- ⊙ Staging Area
- Helispot
- ⊙ Water Source
- ⌘ Division Break
- Road Mileposts
- Railroad Mileposts
- Completed Line
- ⊕ Completed Hand Line
- ⊗ Completed Dozer Line
- Structures
- Railroad
- Other Roads
- Highways
- Label Point



0 375 750 1,500  
 US Feet  
 AKSP Zone 4 - NAD 83

-150°6'30" -150°6'10" -150°5'50" -150°5'30" -150°5'10" -150°4'50" -150°4'30" -150°4'10" -150°3'50" -150°3'30" -150°3'10" -150°2'50" -150°2'30" -150°2'10" -150°1'50"

62°2'10" 62°2' 62°1'50" 62°1'40" 62°1'30" 62°1'20" 62°1'10" 62°1' 62°0'50" 62°0'40" 62°0'30" 62°0'20" 62°0'10" 62°0' 61°59'50" 61°59'40" 61°59'30" 61°59'20" 61°59'10" 61°59' 61°58'50"