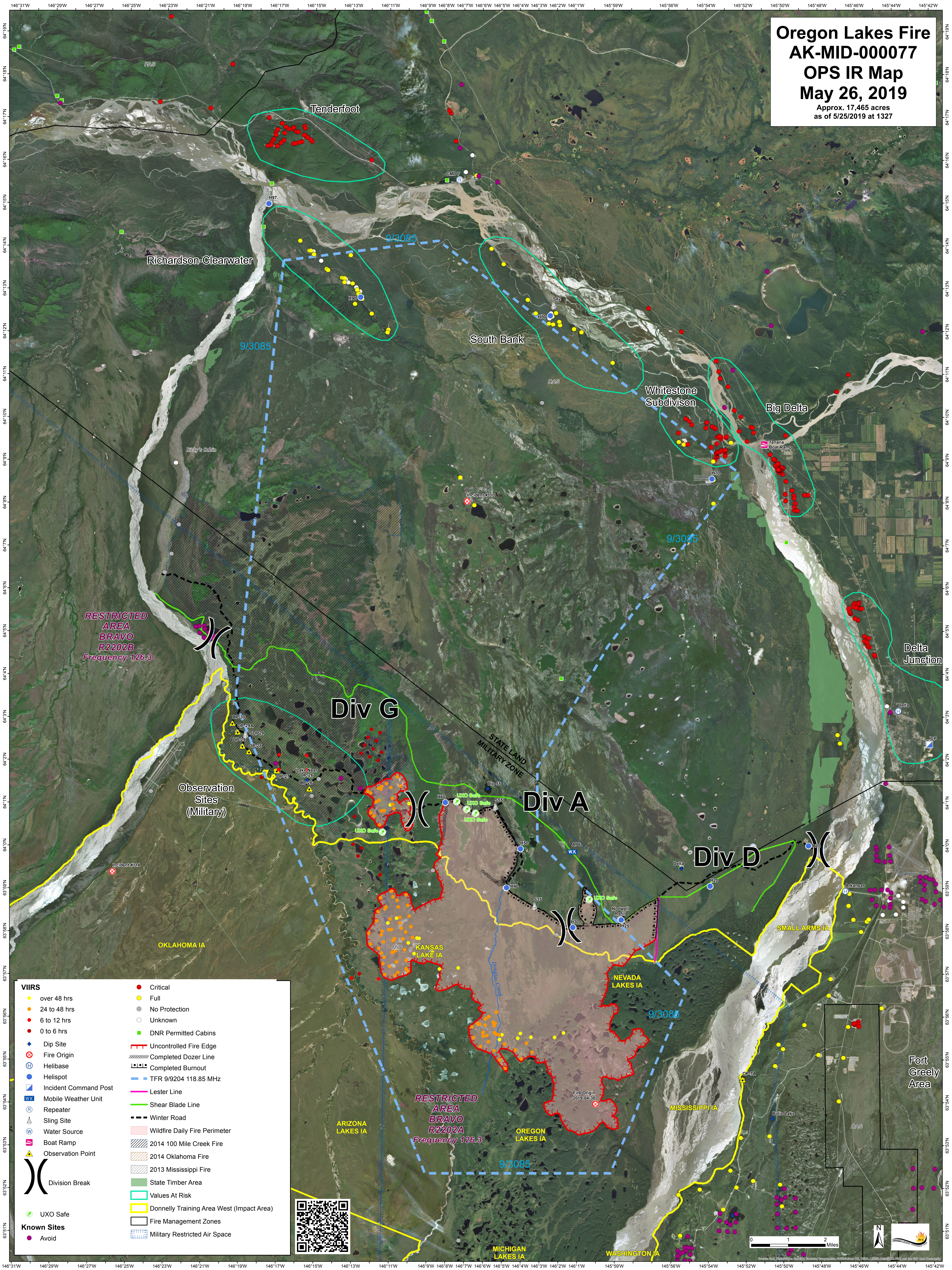


Oregon Lakes Fire AK-MID-000077 OPS IR Map May 26, 2019

Approx. 17,465 acres
as of 5/25/2019 at 1327



RESTRICTED AREA BRAVO R2202B Frequency 126.3

Observation Sites (Military)

Div G

Div A

Div D

STATE LAND MILITARY ZONE

- | | | | | | | | | | | |
|----------------------------|----------------------|-------------------------|--------------------------|-------------------------|---|-------------------------|---------------------------------|--|--|--|
| VIIRS | ● over 48 hrs | ● 24 to 48 hrs | ● 6 to 12 hrs | ● 0 to 6 hrs | ● Critical | ● Full | ● No Protection | ● Unknown | ● DNR Permitted Cabins | |
| ◆ Dip Site | ⊗ Fire Origin | ⊕ Helibase | ⊕ Helispot | ⊕ Incident Command Post | ⊕ Mobile Weather Unit | ⊕ Repeater | ⊕ Sling Site | ⊕ Water Source | ⊕ Boat Ramp | ⊕ Observation Point |
| ⊕ UXO Safe | ● Known Sites | ● Avoid | ⊕ Uncontrolled Fire Edge | ⊕ Completed Dozer Line | ⊕ Completed Burnout | ⊕ TFR 9/9204 118.85 MHz | ⊕ Lester Line | ⊕ Shear Blade Line | ⊕ Winter Road | ⊕ Wildfire Daily Fire Perimeter |
| ⊕ Division Break | ⊕ ARIZONA LAKES IA | ⊕ KANSAS LAKE IA | ⊕ NEVADA LAKES IA | ⊕ MISSISSIPPI IA | ⊕ OREGON LAKES IA | ⊕ MICHIGAN LAKES IA | ⊕ WASHINGTON IA | ⊕ OKLAHOMA IA | ⊕ SMALL ARMS IA | ⊕ Fort Greely Area |
| ⊕ 2014 100 Mile Creek Fire | ⊕ 2014 Oklahoma Fire | ⊕ 2013 Mississippi Fire | ⊕ State Timber Area | ⊕ Values At Risk | ⊕ Donnelly Training Area West (Impact Area) | ⊕ Fire Management Zones | ⊕ Military Restricted Air Space | ⊕ RESTRICTED AREA BRAVO R2202A Frequency 126.3 | ⊕ RESTRICTED AREA BRAVO R2202B Frequency 126.3 | ⊕ RESTRICTED AREA BRAVO R2202C Frequency 126.3 |

