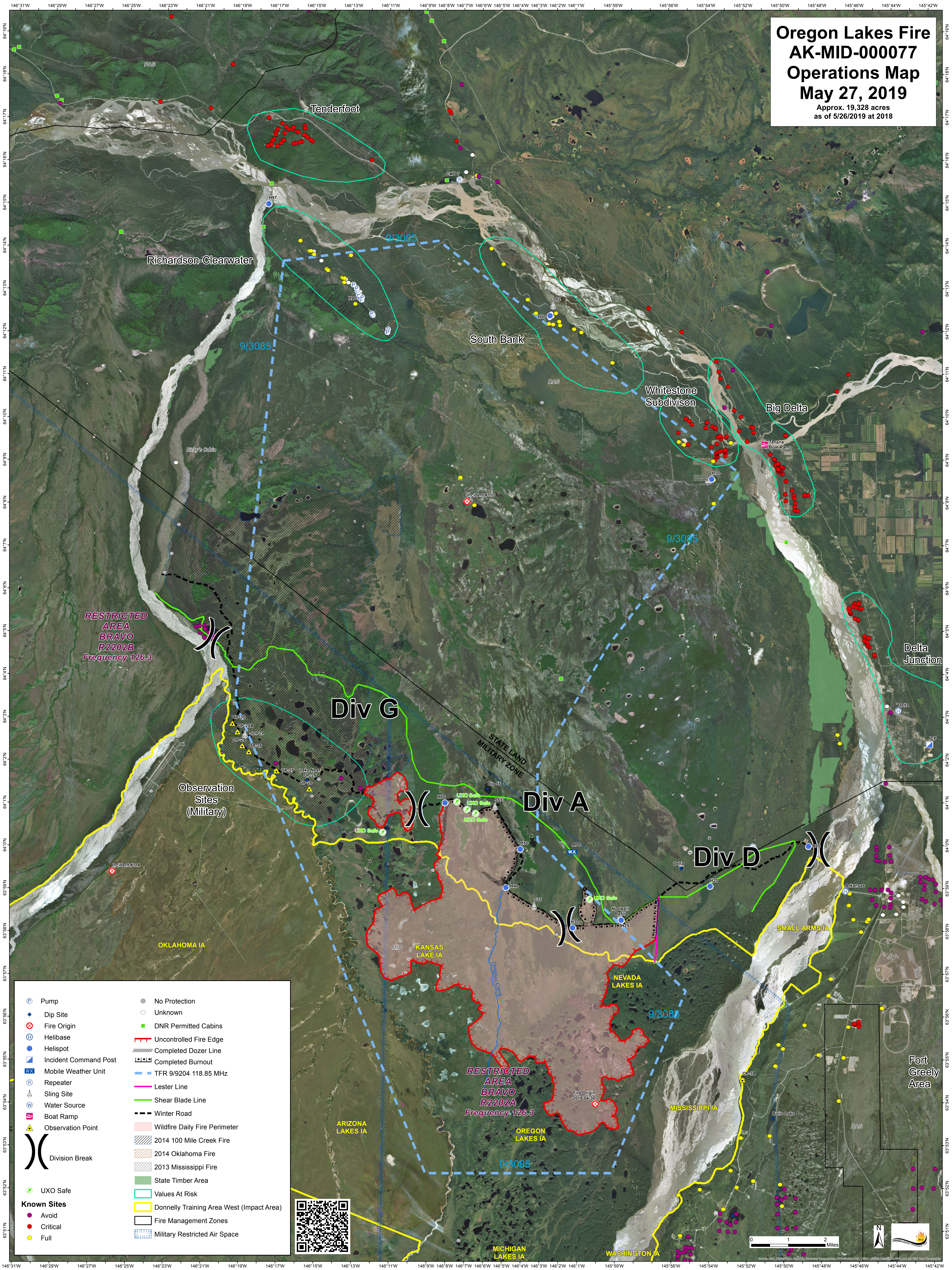
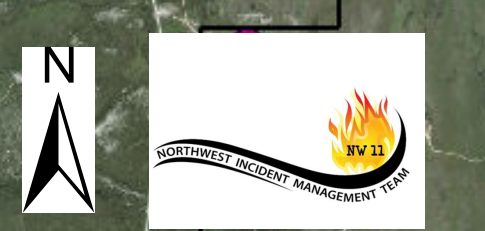
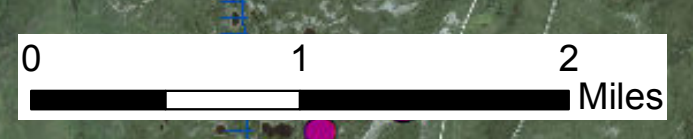


Oregon Lakes Fire AK-MID-000077 Operations Map May 27, 2019

Approx. 19,328 acres
as of 5/26/2019 at 2018



- | | | | |
|--------------------|-----------------------|--|---|
| | Pump | | No Protection |
| | Dip Site | | Unknown |
| | Fire Origin | | DNR Permitted Cabins |
| | Helibase | | Uncontrolled Fire Edge |
| | Helispot | | Completed Dozer Line |
| | Incident Command Post | | Completed Burnout |
| | Mobile Weather Unit | | TFR 9/9204 118.85 MHz |
| | Repeater | | Lester Line |
| | Sling Site | | Shear Blade Line |
| | Water Source | | Winter Road |
| | Boat Ramp | | Wildfire Daily Fire Perimeter |
| | Observation Point | | 2014 100 Mile Creek Fire |
| | Division Break | | 2014 Oklahoma Fire |
| | UXO Safe | | 2013 Mississippi Fire |
| Known Sites | | | State Timber Area |
| | Avoid | | Values At Risk |
| | Critical | | Donnelly Training Area West (Impact Area) |
| | Full | | Fire Management Zones |
| | | | Military Restricted Air Space |



Geographic coordinates are provided along the top and bottom edges of the map, ranging from 146°31'W to 145°42'W and 64°18'N to 63°51'N.

Key locations and features labeled on the map include: Tenderfoot, Richardson-Clearwater, South Bank, Whitestone Subdivision, Big Delta, Delta Junction, Fort Greely Area, Oklahoma IA, Kansas Lake IA, Nevada Lakes IA, Oregon Lakes IA, Michigan Lakes IA, Washington IA, Mississippi IA, and Arizona Lakes IA.

Operational divisions are marked as Div G, Div A, and Div D. A Restricted Area Bravo R2202A is also indicated.