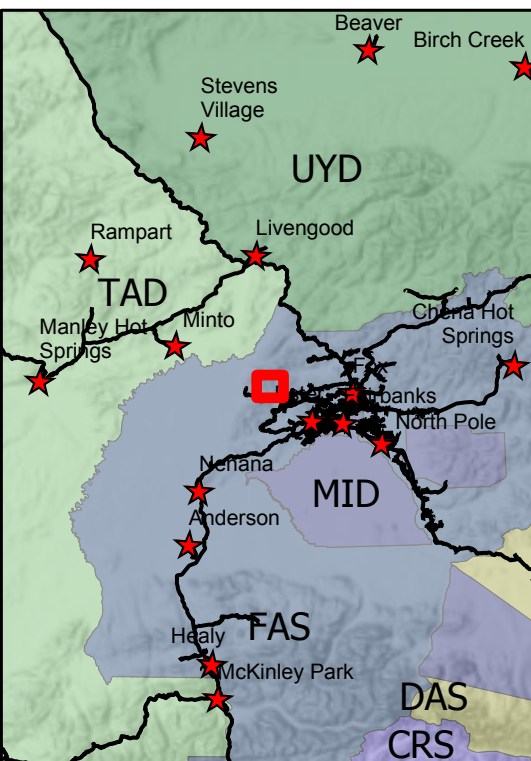


**319 Shovel Creek Operations Map**  
Approx. 740 ac.  
as of 6/25/2019

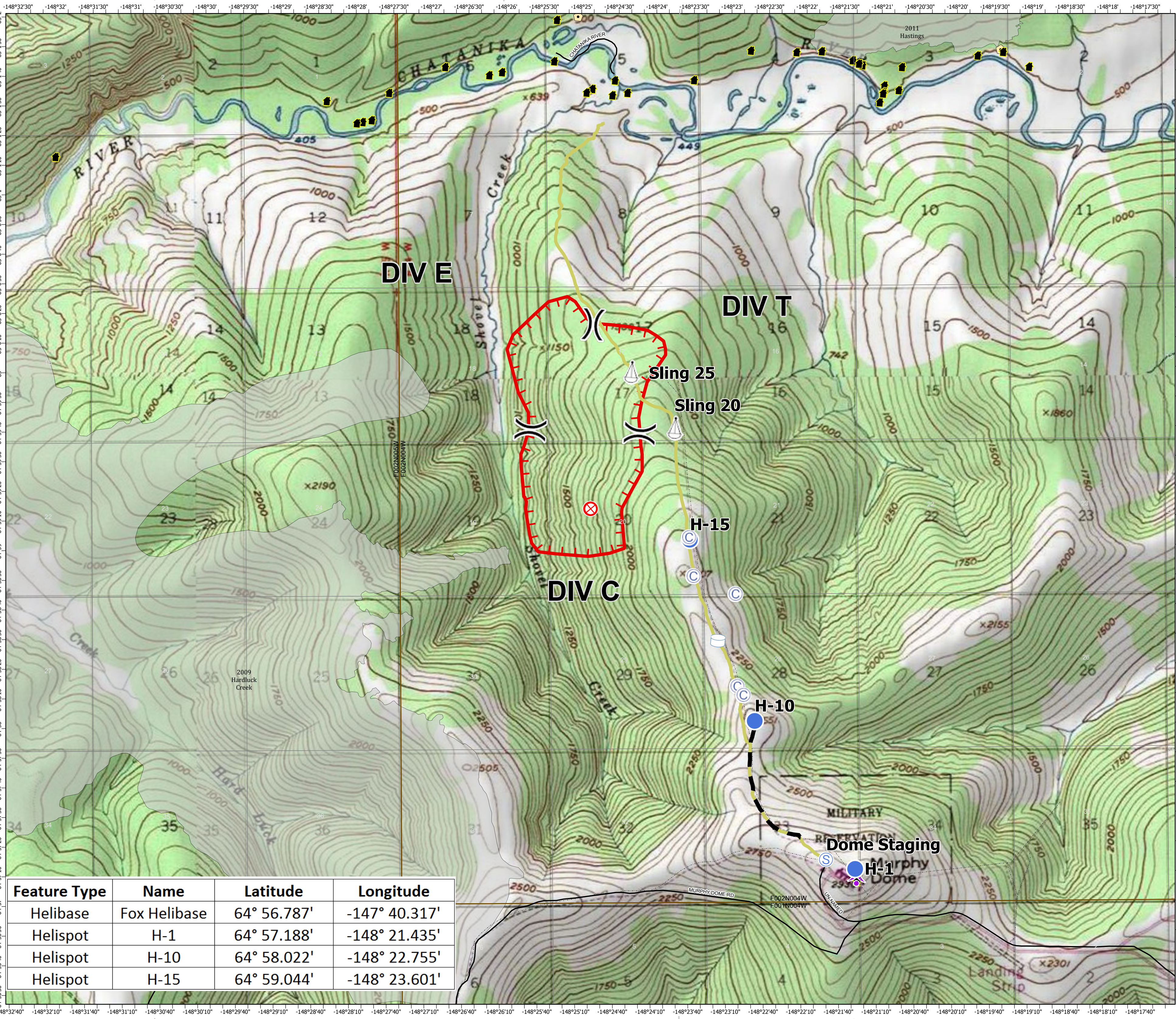
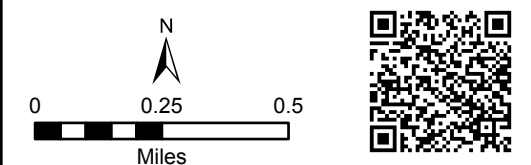


6/26/2019  
Operational Period

- Water Tank
- Sling Site
- Helispot
- Camp
- Fire Origin
- Staging Area
- Division Break
- Uncontrolled Fire Edge
- Access
- Completed Dozer Line
- Trails
- Townships
- Sections
- Communications
- Other
- Structure
- Fire History Less than 20 years old



Alaska Albers Projection  
NAD 83 Datum



Feature Type	Name	Latitude	Longitude
Helibase	Fox Helibase	64° 56.787'	-147° 40.317'
Helispot	H-1	64° 57.188'	-148° 21.435'
Helispot	H-10	64° 58.022'	-148° 22.755'
Helispot	H-15	64° 59.044'	-148° 23.601'