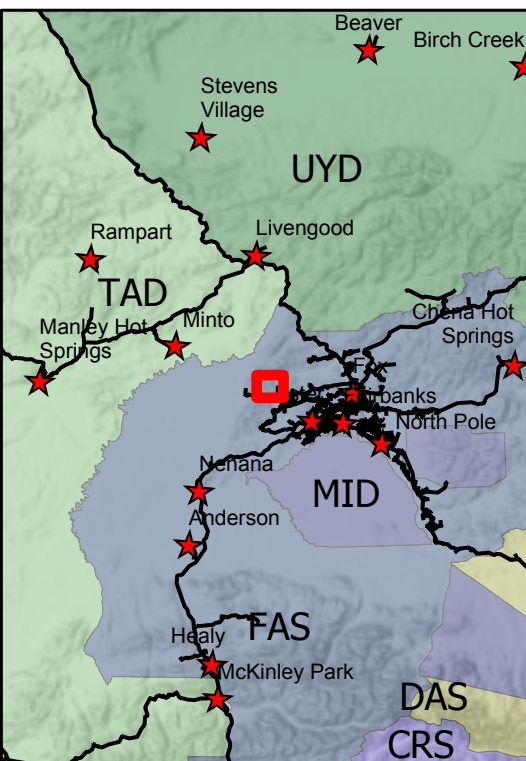


319 Shovel Creek Operations Map
Approx. 1622 ac.
as of 6/26/2019

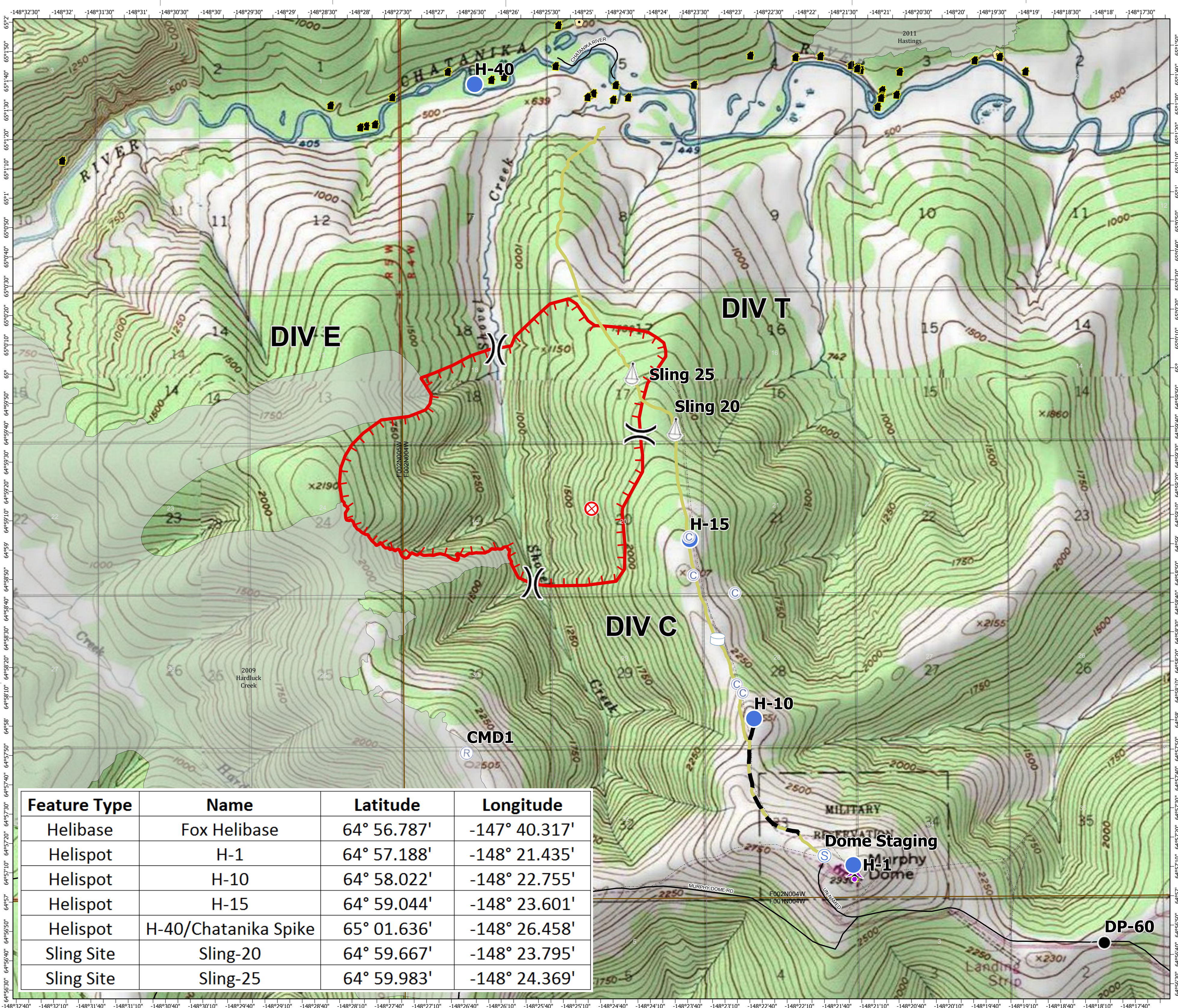
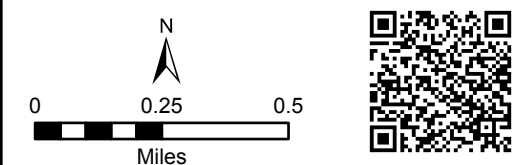


6/27/2019
Operational Period

- Water Tank
- Helispot
- Sling Site
- Camp
- Drop Point
- Fire Origin
- Repeater
- Staging Area
- Division Break
- Uncontrolled Fire Edge
- Access
- Completed Dozer Line
- Trails
- Townships
- Sections
- Communications
- Other
- Structure
- Fire History Less than 20 years old



Alaska Albers Projection
NAD 83 Datum



Feature Type	Name	Latitude	Longitude
Helibase	Fox Helibase	64° 56.787'	-147° 40.317'
Helispot	H-1	64° 57.188'	-148° 21.435'
Helispot	H-10	64° 58.022'	-148° 22.755'
Helispot	H-15	64° 59.044'	-148° 23.601'
Helispot	H-40/Chatanika Spike	65° 01.636'	-148° 26.458'
Sling Site	Sling-20	64° 59.667'	-148° 23.795'
Sling Site	Sling-25	64° 59.983'	-148° 24.369'