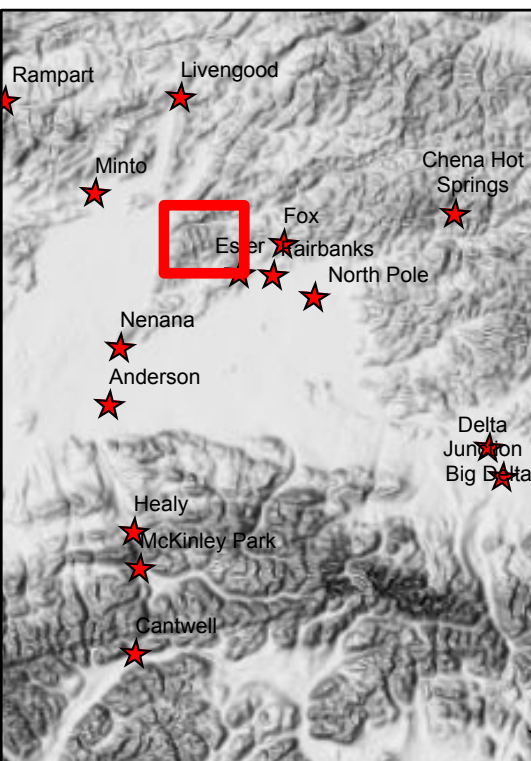


**319 Shovel Creek  
Aviation Map  
Approx. 2307 ac.  
as of 6/27/2019**

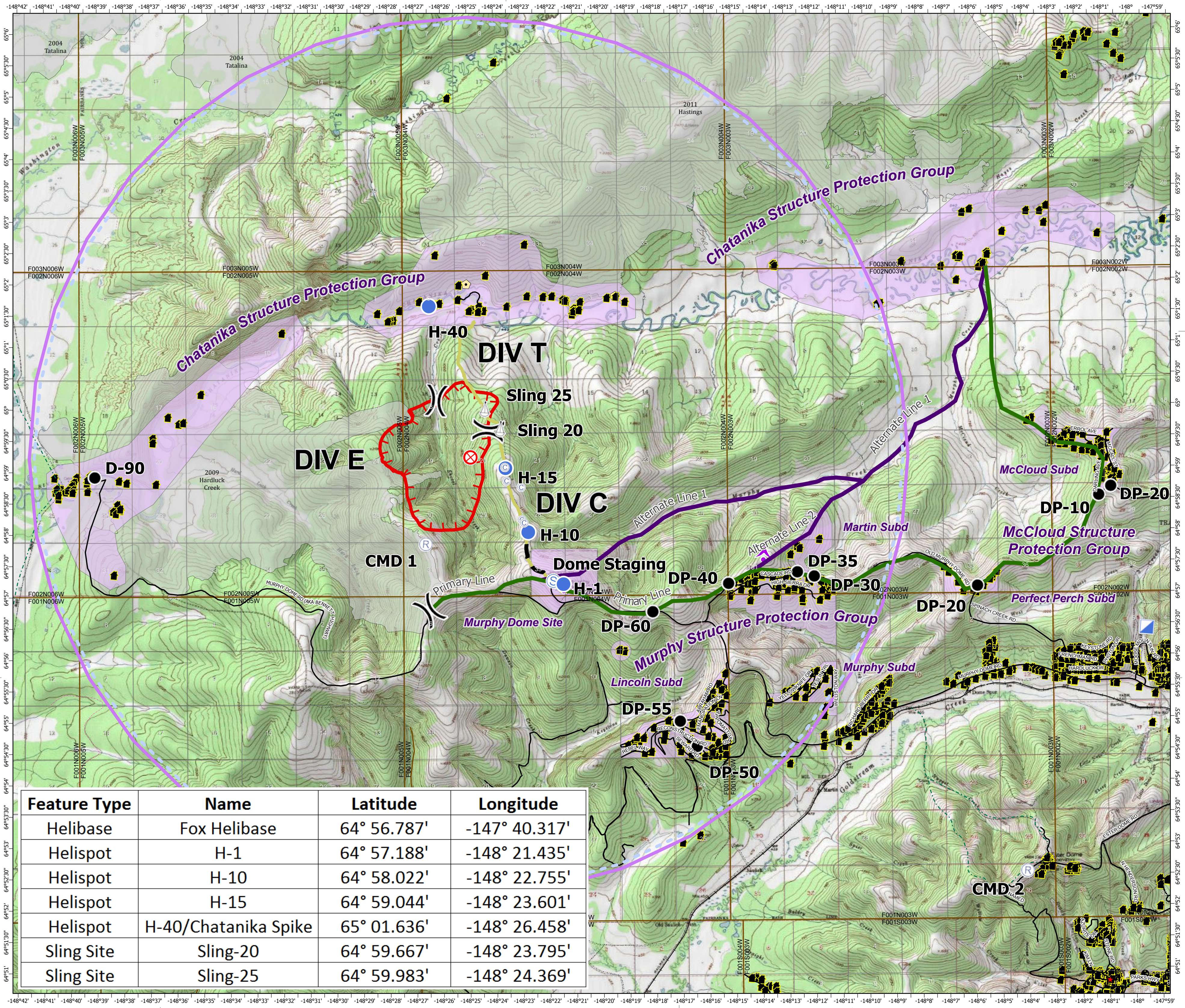


6/28/2019  
Operational Period

- Sling Site
- Helispot
- Camp
- Drop Point
- Fire Origin
- Incident Command Post
- Repeater
- Staging Area
- Division Break
- Uncontrolled Fire Edge
- 7-Mile Trail
- Completed Dozer Line
- Alternate Lines
- Primary Line
- RS2477
- Trails
- Electrical Lines
- Communications
- Other
- Structure
- Allotment Boundary
- Fire History Less than 20 years old
- Structure Protection Areas
- TFR 90263



Alaska Albers Projection  
NAD 83 Datum



Feature Type	Name	Latitude	Longitude
Helibase	Fox Helibase	64° 56.787'	-147° 40.317'
Helispot	H-1	64° 57.188'	-148° 21.435'
Helispot	H-10	64° 58.022'	-148° 22.755'
Helispot	H-15	64° 59.044'	-148° 23.601'
Helispot	H-40/Chatanika Spike	65° 01.636'	-148° 26.458'
Sling Site	Sling-20	64° 59.667'	-148° 23.795'
Sling Site	Sling-25	64° 59.983'	-148° 24.369'