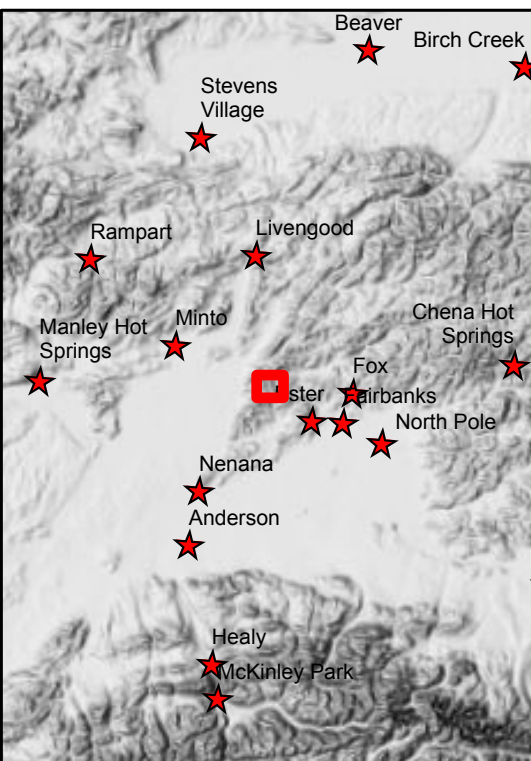


**319 Shovel Creek Operations Map**  
 Approx. 2307 ac.  
 as of 6/27/2019

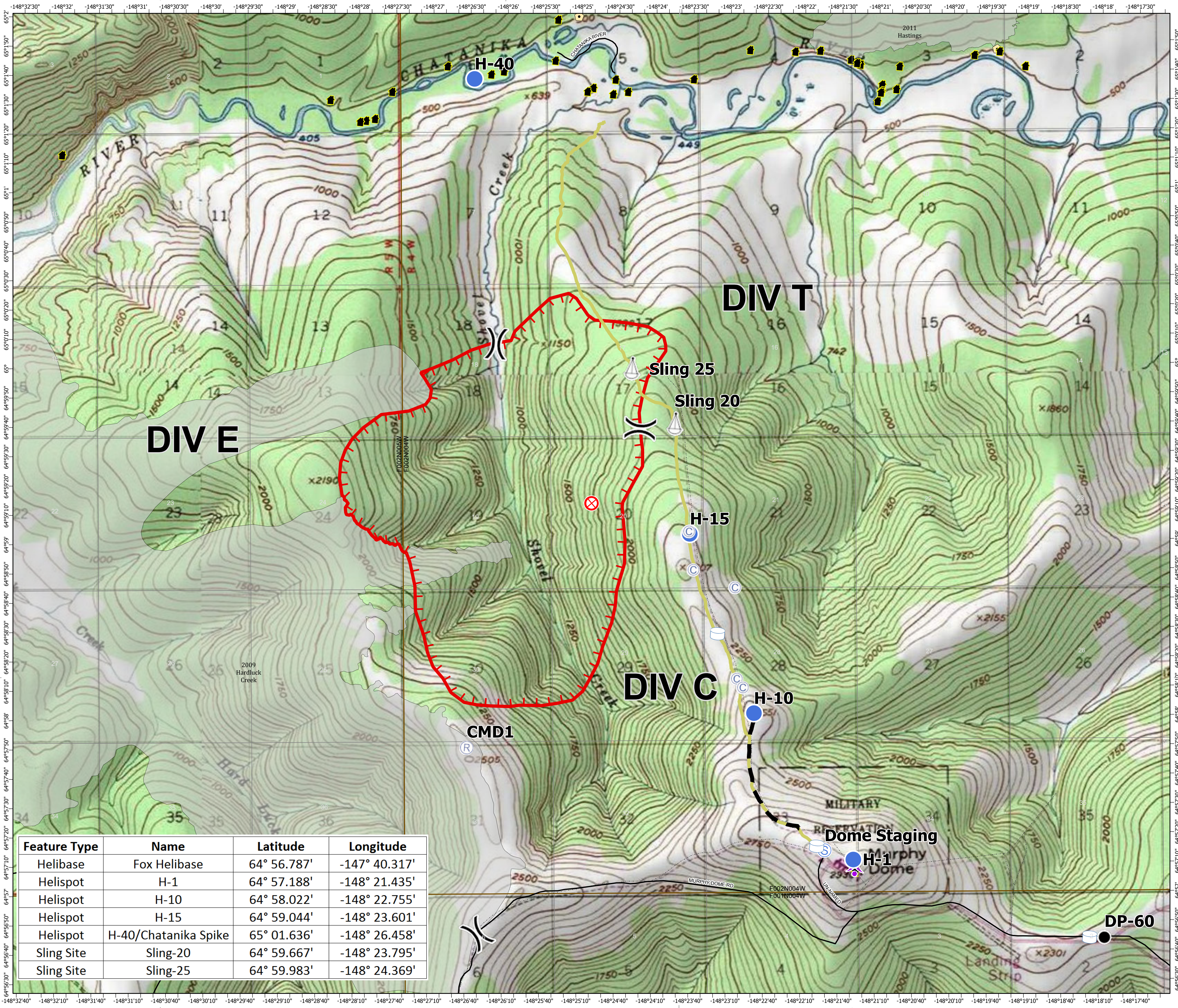
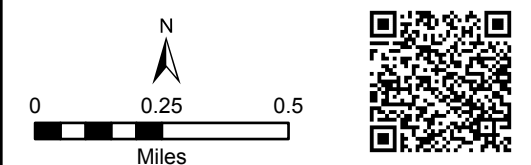


6/28/2019  
 Operational Period

- Water Tank
- Helispot
- Sling Site
- Camp
- Drop Point
- Fire Origin
- Repeater
- Staging Area
- Division Break
- Uncontrolled Fire Edge
- 7-Mile Trail
- Completed Dozer Line
- Trails
- Townships
- Sections
- Communications
- Other
- Structure
- Fire History Less than 20 years old



Alaska Albers Projection  
 NAD 83 Datum



| Feature Type | Name                 | Latitude    | Longitude     |
|--------------|----------------------|-------------|---------------|
| Helibase     | Fox Helibase         | 64° 56.787' | -147° 40.317' |
| Helispot     | H-1                  | 64° 57.188' | -148° 21.435' |
| Helispot     | H-10                 | 64° 58.022' | -148° 22.755' |
| Helispot     | H-15                 | 64° 59.044' | -148° 23.601' |
| Helispot     | H-40/Chatanika Spike | 65° 01.636' | -148° 26.458' |
| Sling Site   | Sling-20             | 64° 59.667' | -148° 23.795' |
| Sling Site   | Sling-25             | 64° 59.983' | -148° 24.369' |