

Murphy Structure Protection Group

Shovel Creek

AK-FAS-911319

06/28/2019



McCloud Subd

ERROL AVE

DARLING AVE

MCCALL ST

DP-20

DP-10

Perfect Perch Subd

DP-25

Martin Subd

DP-40

DP-35

DP-30

DP-60

Murphy Subd

Lincoln Subd

DP-50

DP-45

Legend:

- Subdivision Boundary
- Roads
- Drop Point

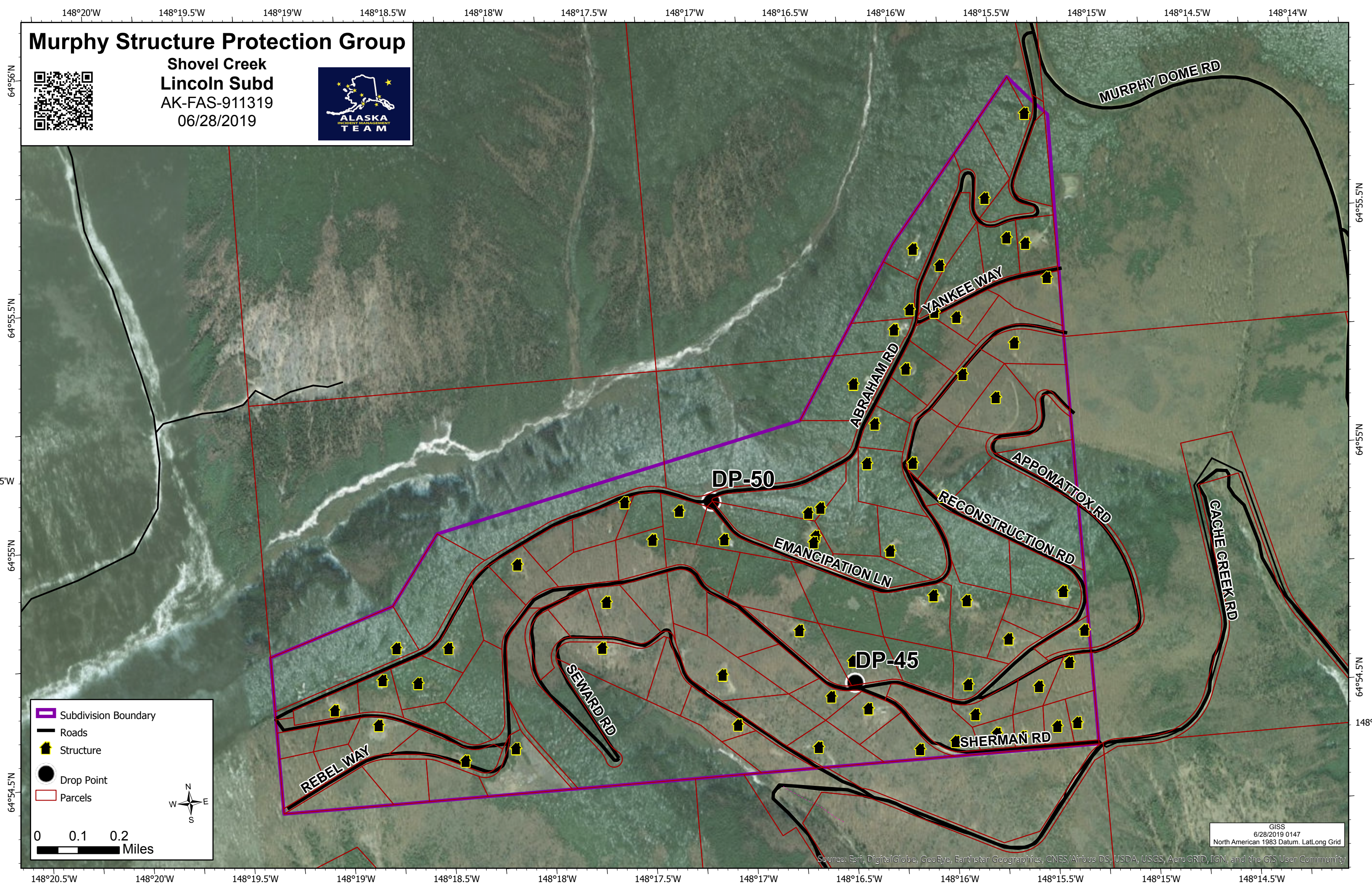
Scale: 0 0.5 1 Miles

GISS
6/28/2019 0101
North American 1983 Datum, Lat/Long Grid

Copyright © 2013 National Geographic Society, i-cubed

Murphy Structure Protection Group

Shovel Creek
Lincoln Subd
AK-FAS-911319
06/28/2019



- Subdivision Boundary
- Roads
- Structure
- Drop Point
- Parcels

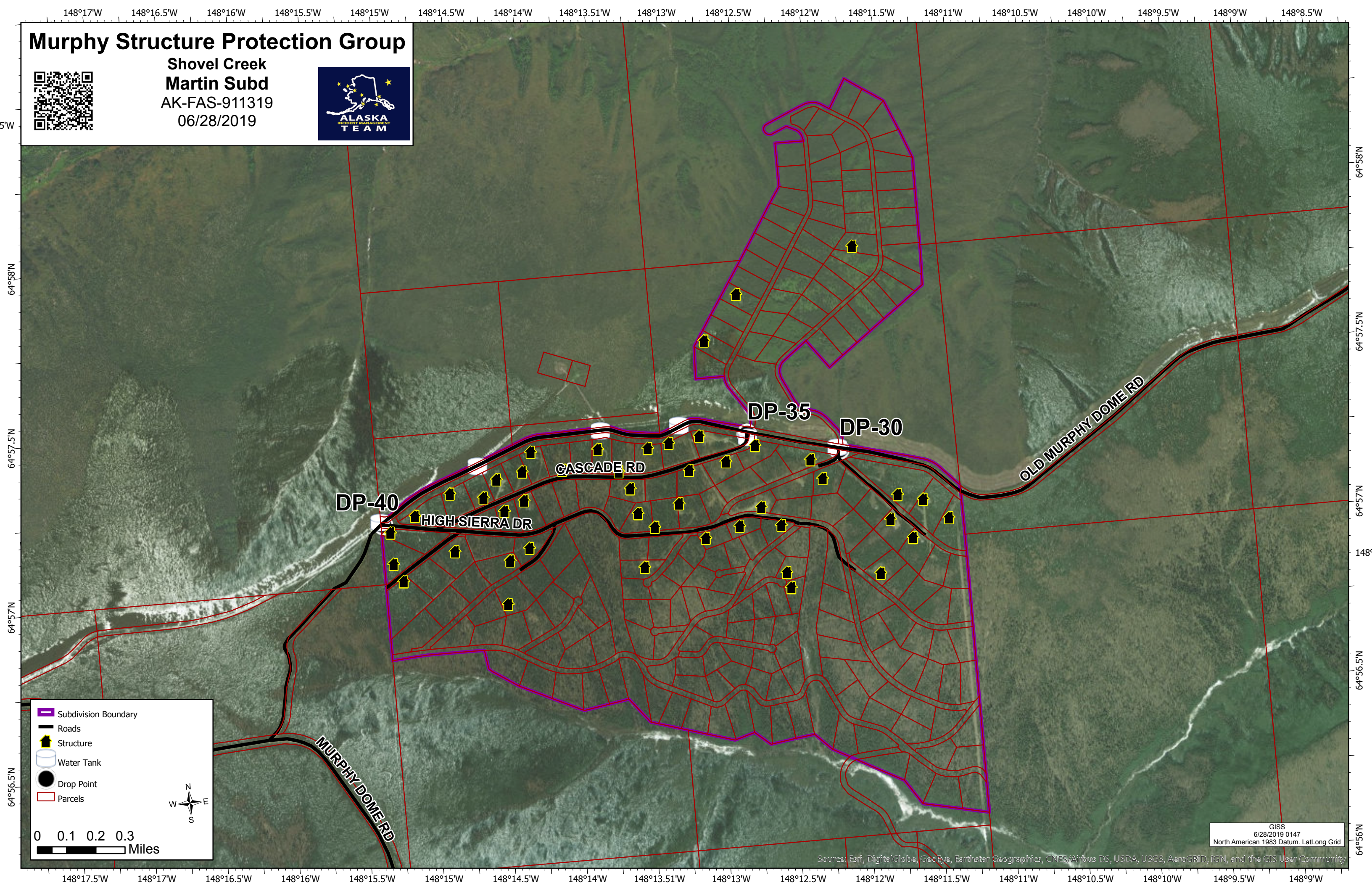
0 0.1 0.2 Miles

GISS
6/28/2019 0147
North American 1983 Datum, LatLong Grid

Source: Esri, DigitalGlobe, GeoEye, Earthstar Geographics, CNES/Airbus DS, USDA, USGS, AeroGRID, IGN, and the GIS User Community

Murphy Structure Protection Group

Shovel Creek
Martin Subd
AK-FAS-911319
06/28/2019



- Subdivision Boundary
- Roads
- Structure
- Water Tank
- Drop Point
- Parcels

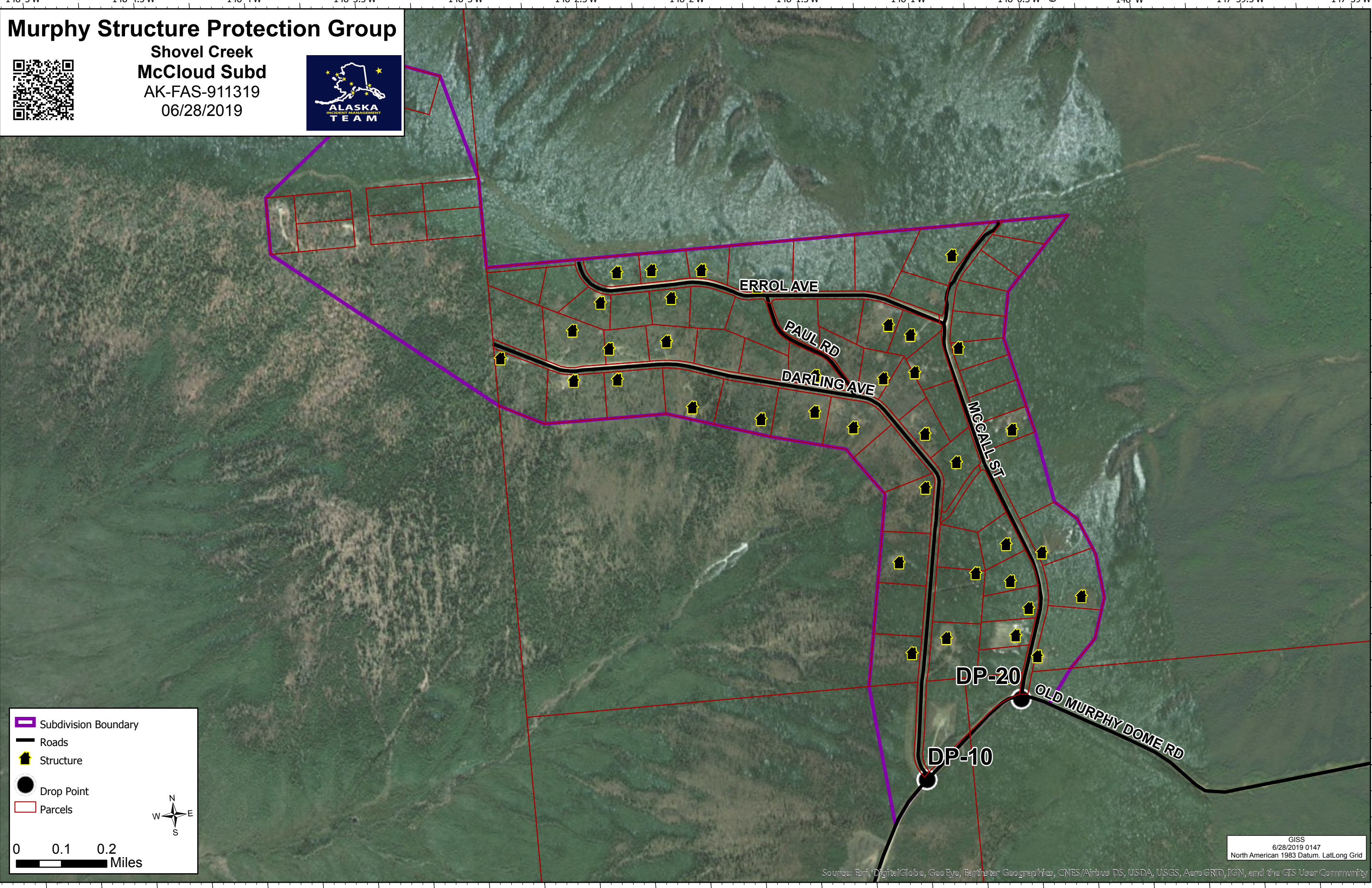
0 0.1 0.2 0.3 Miles

GISS
6/28/2019 0147
North American 1983 Datum. Lat/Long Grid

Source: Esri, DigitalGlobe, GeoEye, Earthstar Geographics, CNES/Airbus DS, USDA, USGS, AeroGRID, IGN, and the GIS User Community

Murphy Structure Protection Group

Shovel Creek
McCloud Subd
AK-FAS-911319
06/28/2019



- Subdivision Boundary
- Roads
- Structure
- Drop Point
- Parcels

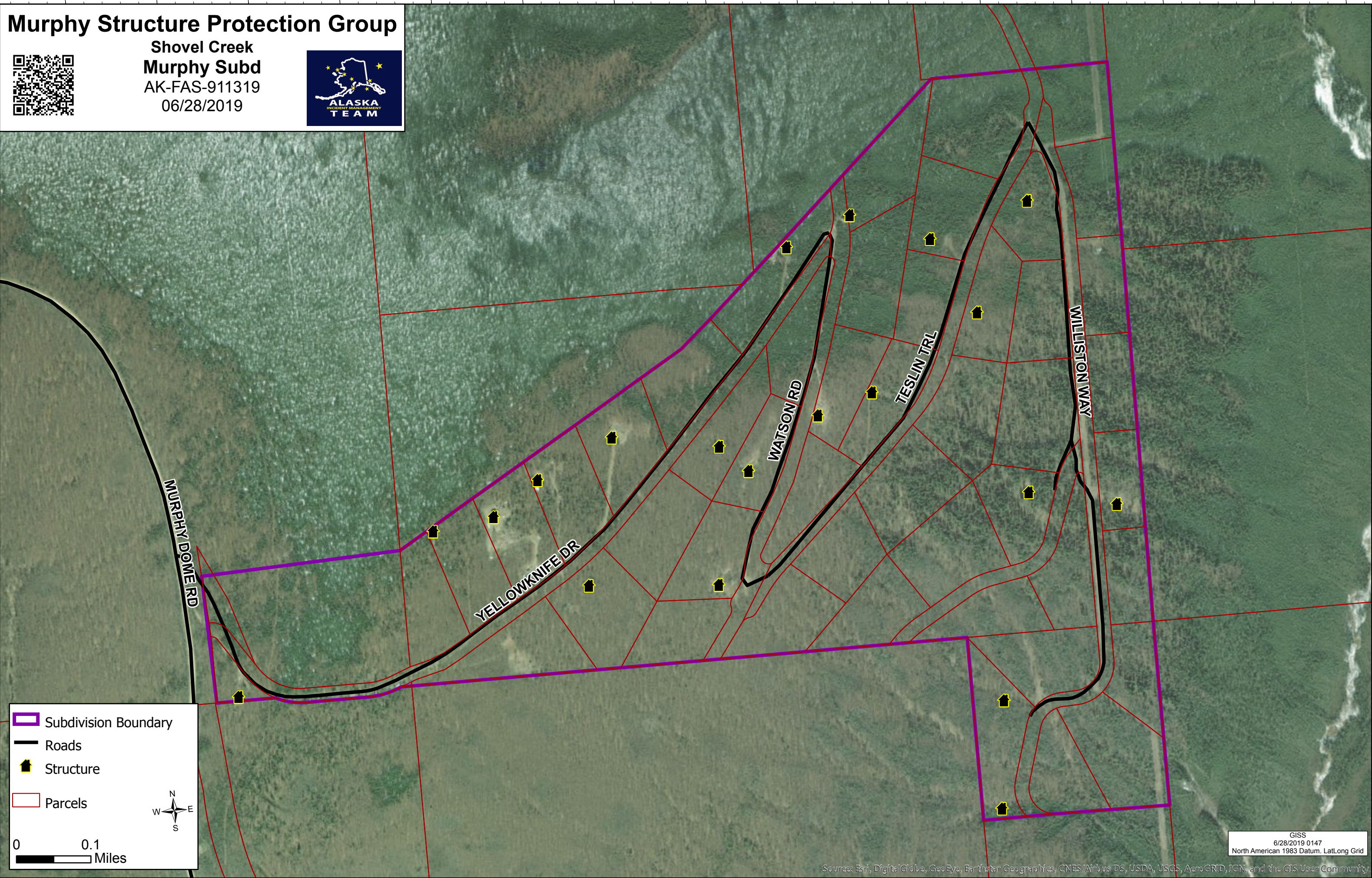
0 0.1 0.2 Miles

GISS
6/28/2019 0147
North American 1983 Datum, LatLong Grid

Source: Esri, DigitalGlobe, GeoEye, Earthstar Geographics, CNES/Airbus DS, USDA, USGS, AeroGRID, IGN, and the GIS User Community

Murphy Structure Protection Group

Shovel Creek
Murphy Subd
AK-FAS-911319
06/28/2019



- Subdivision Boundary
- Roads
- Structure
- Parcels



0 0.1 Miles

GISS
6/28/2019 0147
North American 1983 Datum. LatLong Grid

Source: Esri, DigitalGlobe, GeoEye, Earthstar Geographics, CNES/Airbus DS, USDA, USGS, AeroGRID, IGN, and the GIS User Community

148°7'W

148°6.5'W

148°6.01'W

148°5.5'W

64°57'N

148°5'W

Murphy Structure Protection Group

Shovel Creek

Perfect Perch Subd

AK-FAS-911319

06/28/2019



64°57.5'N



64°57'N

- Subdivision Boundary
- Roads
- Structure
- Drop Point
- Parcels

0 0.1 Miles

GISS
6/28/2019 0147
North American 1983 Datum, LatLong Grid

Source: Esri, DigitalGlobe, GeoEye, Earthstar Geographics, CNES/Airbus DS, USDA, USGS, AeroGRID, IGN, and the GIS User Community

148°7'W

148°6.5'W

148°6.01'W

148°5.5'W

148°5'W