

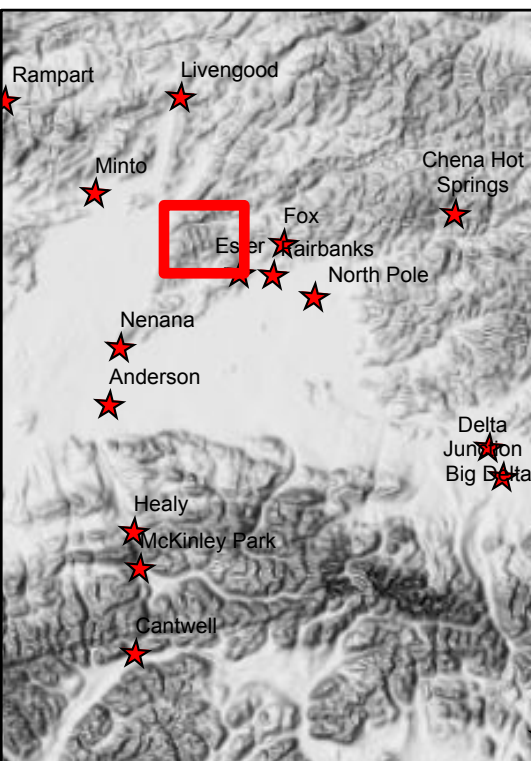
319 Shovel Creek Plans
MAP Map
 Approx. 3424 ac.
 as of 6/28/2019



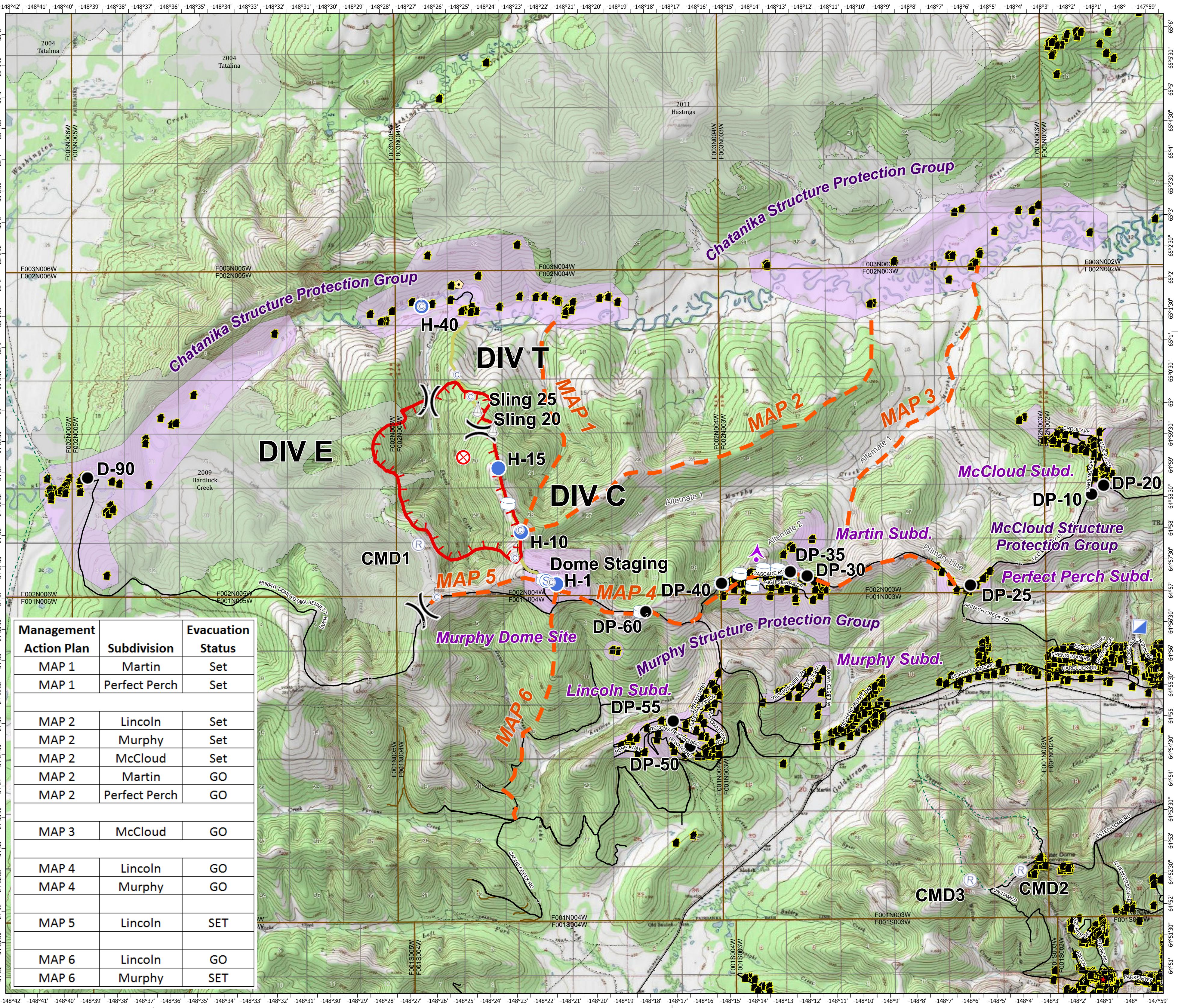
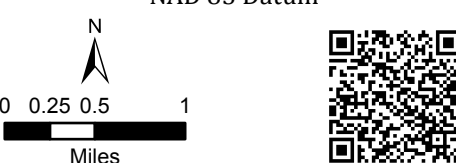
6/29/2019
 Operational Period

- Water Tank
- Sling Site
- Helispot
- Camp
- Drop Point
- Fire Origin
- Incident Command Post
- Repeater
- Staging Area
- Division Break

- Uncontrolled Fire Edge
- 7-Mile Trail
- Completed Dozer Line
- Management Action Point
- RS2477
- Trails
- Electrical Lines
- Communications
- Other
- Structure
- Allotment Boundary
- Fire History Less than 20 years old
- Structure Protection Areas



Alaska Albers Projection
 NAD 83 Datum



Management Action Plan	Subdivision	Evacuation Status
MAP 1	Martin	Set
MAP 1	Perfect Perch	Set
MAP 2	Lincoln	Set
MAP 2	Murphy	Set
MAP 2	McCloud	Set
MAP 2	Martin	GO
MAP 2	Perfect Perch	GO
MAP 3	McCloud	GO
MAP 4	Lincoln	GO
MAP 4	Murphy	GO
MAP 5	Lincoln	SET
MAP 6	Lincoln	GO
MAP 6	Murphy	SET