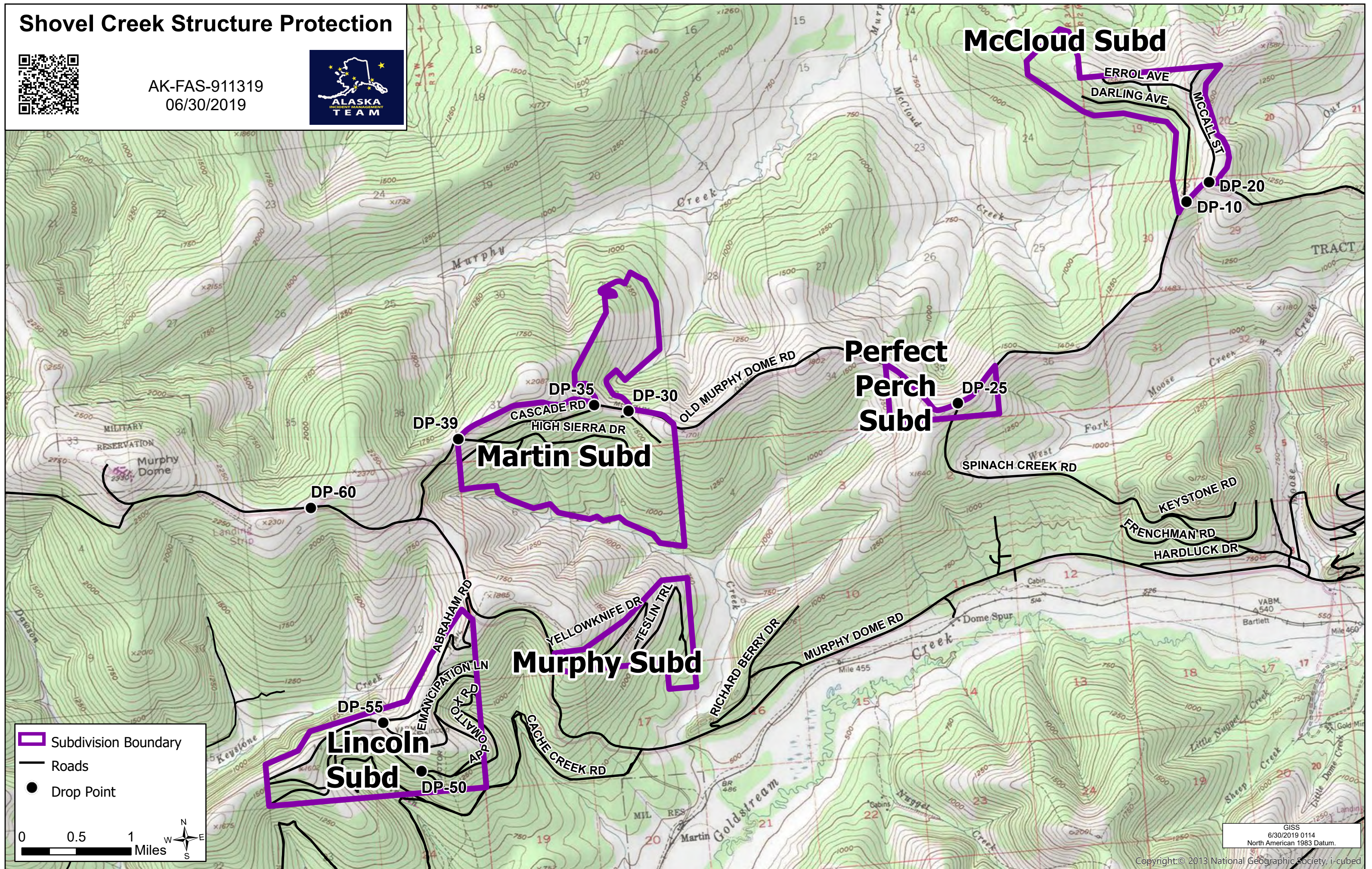


Shovel Creek Structure Protection



AK-FAS-911319
06/30/2019

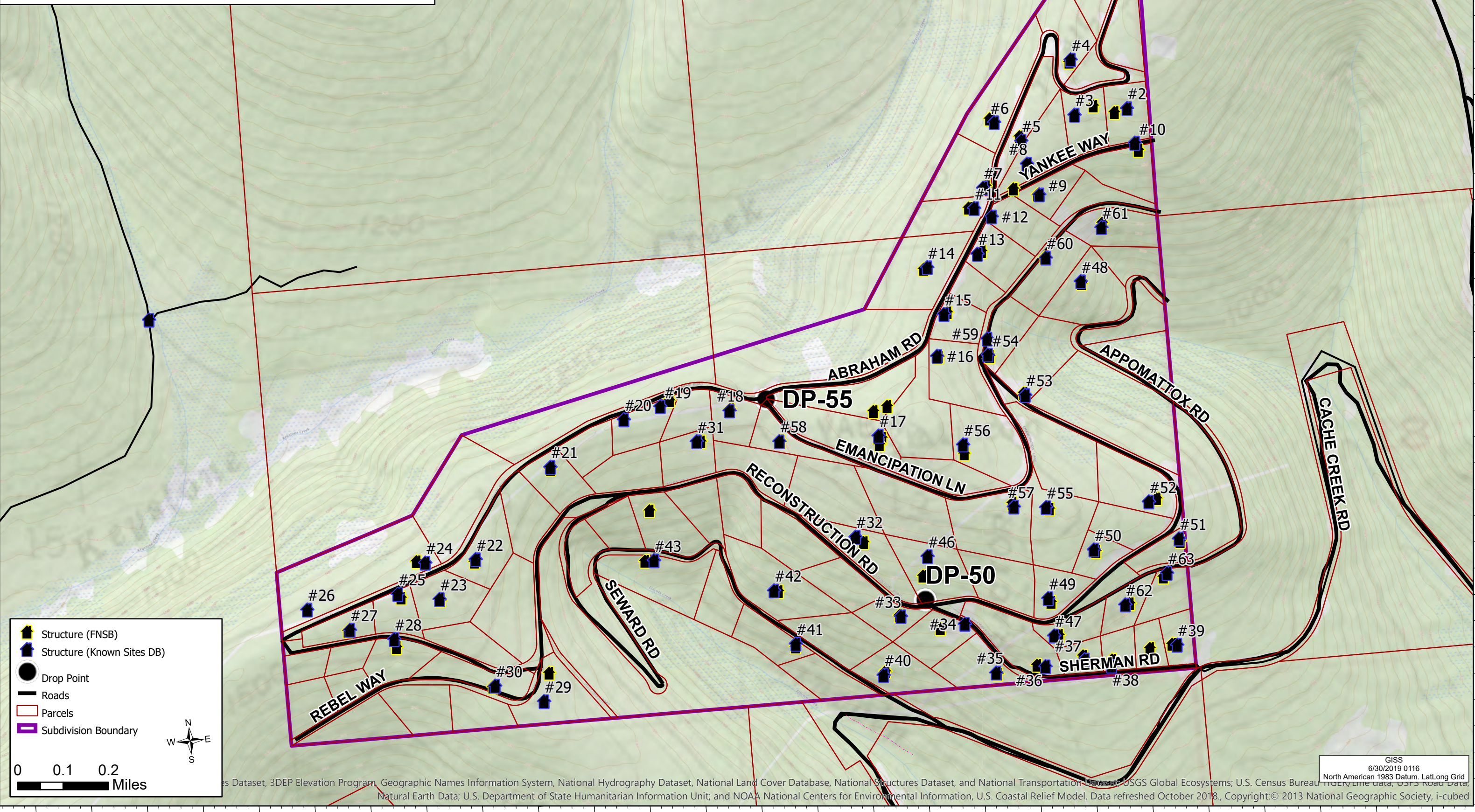


GISS
6/30/2019 0114
North American 1983 Datum.

Murphy Structure Protection Group



Lincoln Subd
AK-FAS-911319
06/30/2019



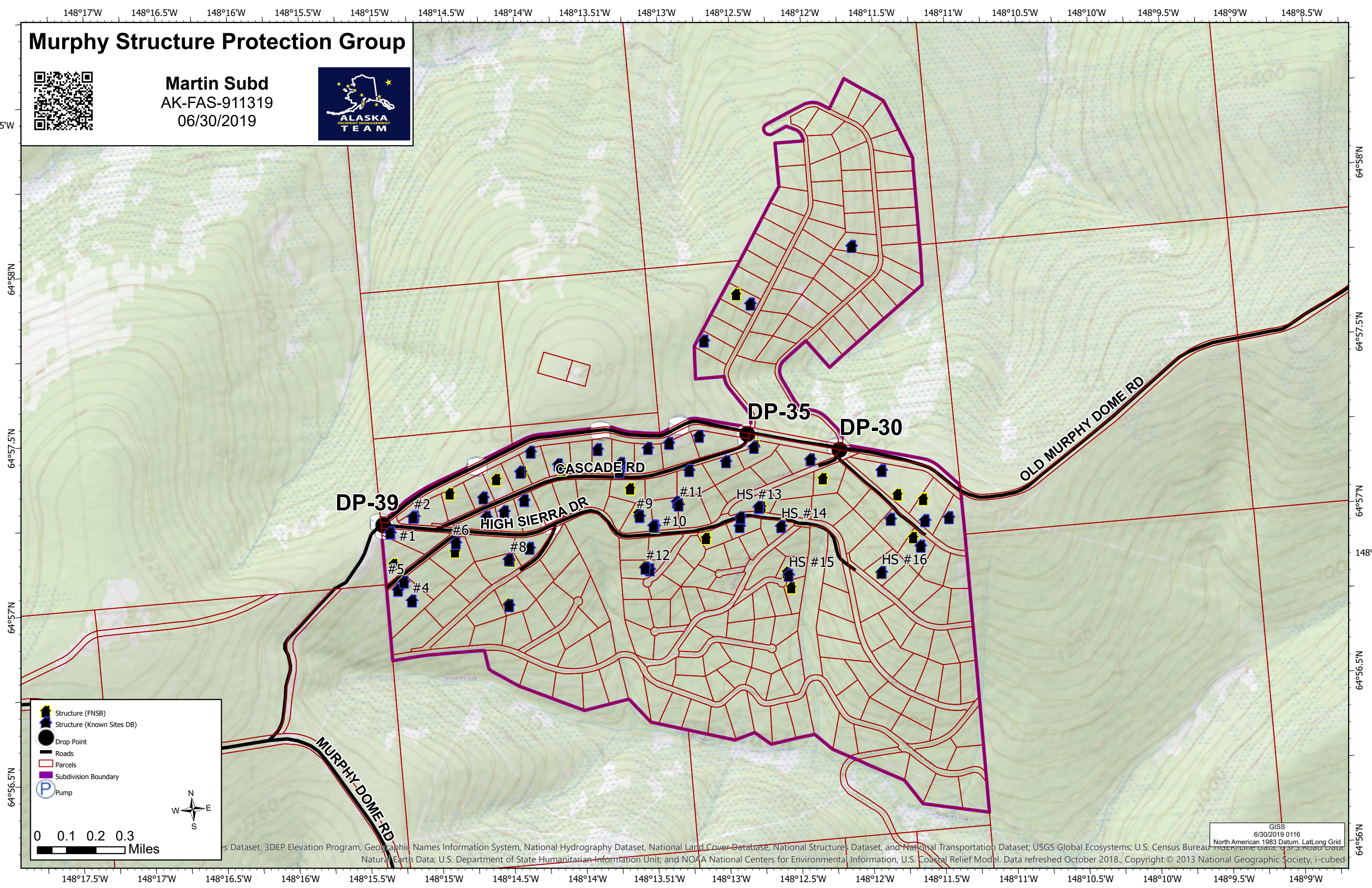
- Structure (FNSB)
- Structure (Known Sites DB)
- Drop Point
- Roads
- Parcels
- Subdivision Boundary

0 0.1 0.2 Miles

Murphy Structure Protection Group



Martin Subd
AK-FAS-911319
06/30/2019



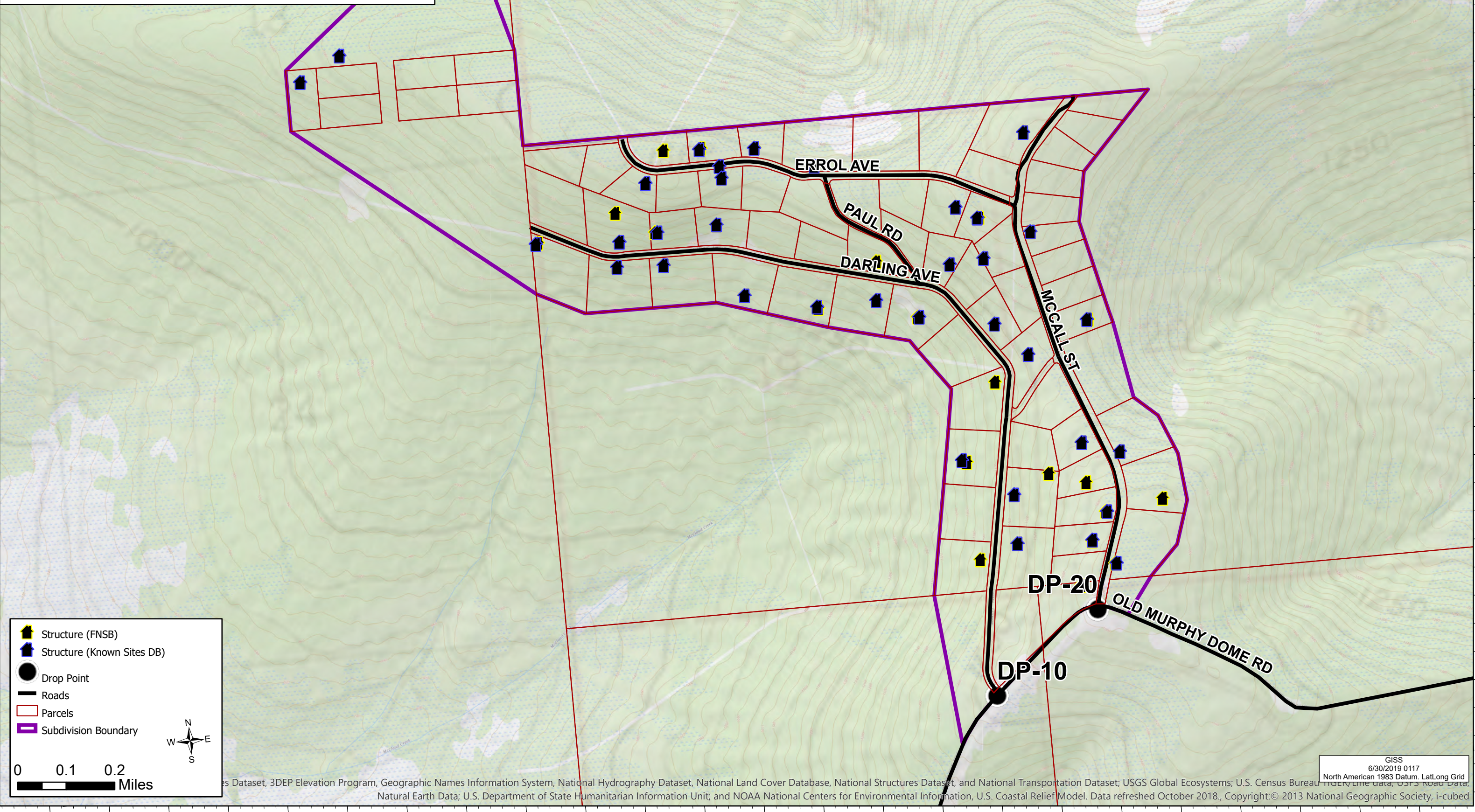
- Structure (FNSB)
- Structure (Known Sites DB)
- Drop Point
- Roads
- Parcels
- Subdivision Boundary
- Pump

0 0.1 0.2 0.3 Miles

Murphy Structure Protection Group



McCloud Subd
AK-FAS-911319
06/30/2019



- Structure (FNSB)
- Structure (Known Sites DB)
- Drop Point
- Roads
- Parcels
- Subdivision Boundary

0 0.1 0.2 Miles

GIS Data Sources: National Hydrography Dataset, 3DEP Elevation Program, Geographic Names Information System, National Land Cover Database, National Structures Dataset, and National Transportation Dataset; USGS Global Ecosystems; U.S. Census Bureau TIGER/Line data; USFS Road Data; Natural Earth Data; U.S. Department of State Humanitarian Information Unit; and NOAA National Centers for Environmental Information, U.S. Coastal Relief Model. Data refreshed October 2018. Copyright: © 2013 National Geographic Society, i-cubed

Murphy Structure Protection Group



Murphy Subd
AK-FAS-911319
06/30/2019



- Structure (FNSB)
- Roads
- Parcels
- Subdivision Boundary

0 0.1 Miles

GISS 6/30/2019 0117
North American 1983 Datum, LatLong Grid
Natural Earth Data; U.S. Department of State Humanitarian Information Unit; and NOAA National Centers for Environmental Information, U.S. Coastal Relief Model. Data refreshed October 2018., Copyright:© 2013 National Geographic Society, i-cubed

148°7'W 148°6.5'W 148°6.01'W 148°5.5'W 148°5'W

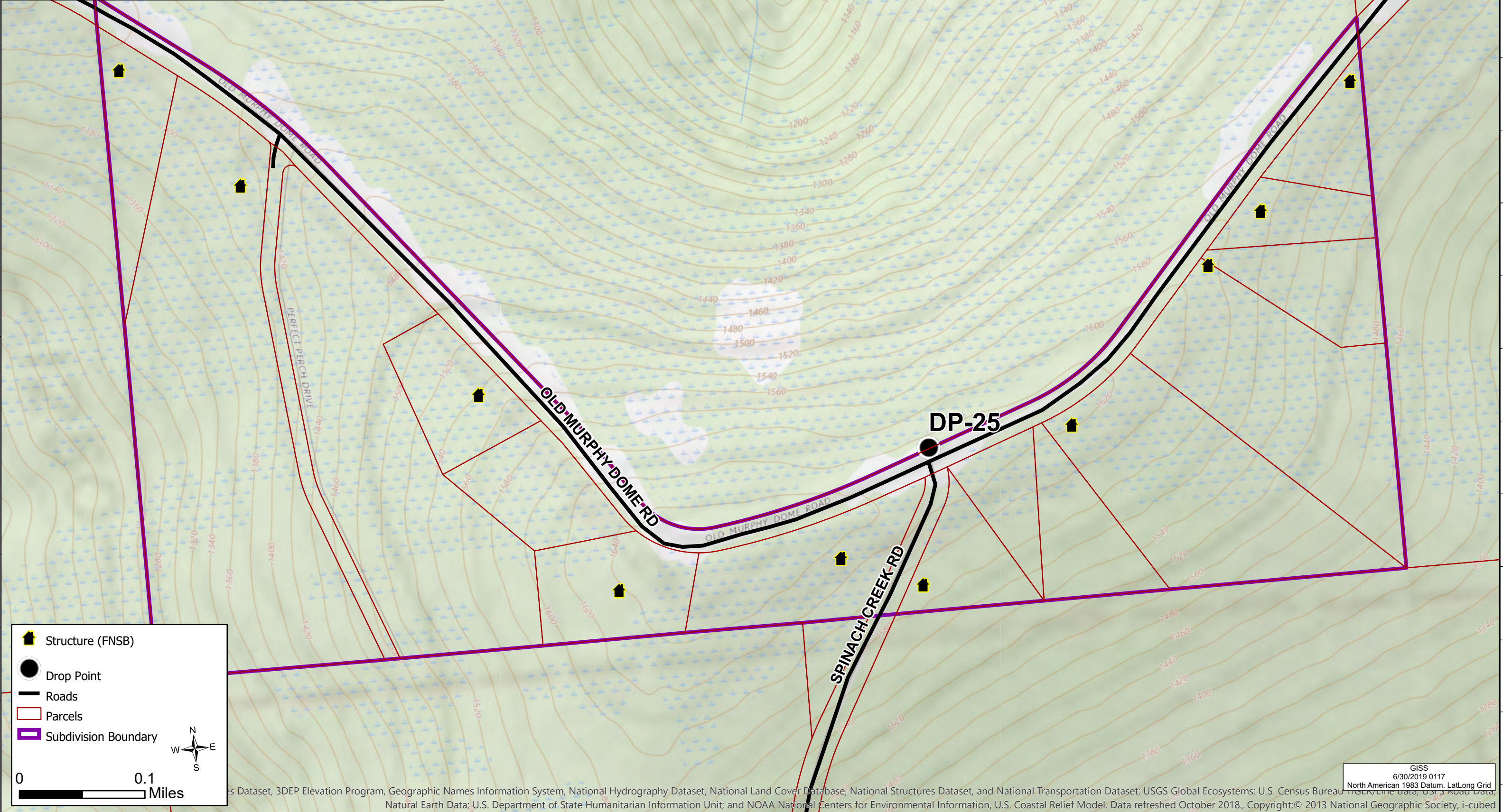
Murphy Structure Protection Group



Perfect Perch Subd
AK-FAS-911319
06/30/2019



64°57'5"N



64°57'N

- Structure (FNSB)
- Drop Point
- Roads
- Parcels
- Subdivision Boundary

0 0.1 Miles

GIS Data, 3DEP Elevation Program, Geographic Names Information System, National Hydrography Dataset, National Land Cover Database, National Structures Dataset, and National Transportation Dataset; USGS Global Ecosystems; U.S. Census Bureau TIGER/Line data, USFS Road Data, Natural Earth Data; U.S. Department of State Humanitarian Information Unit; and NOAA National Centers for Environmental Information, U.S. Coastal Relief Model. Data refreshed October 2018., Copyright:© 2013 National Geographic Society, i-cubed

148°7'W 148°6.5'W 148°6.01'W 148°5.5'W 148°5'W