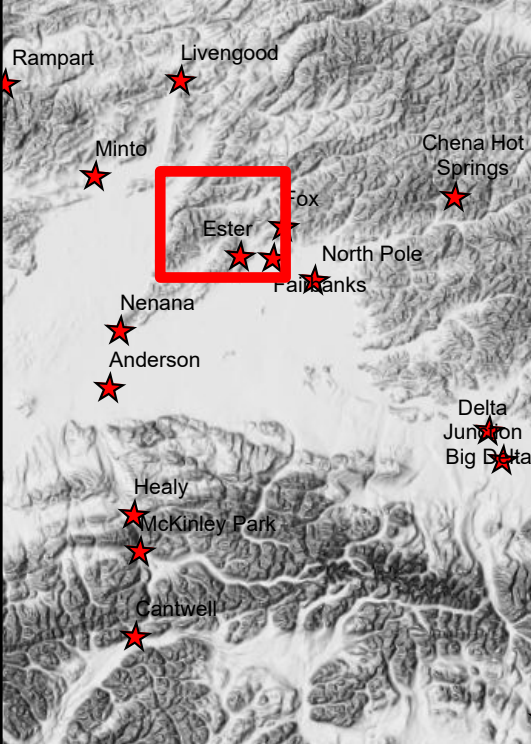
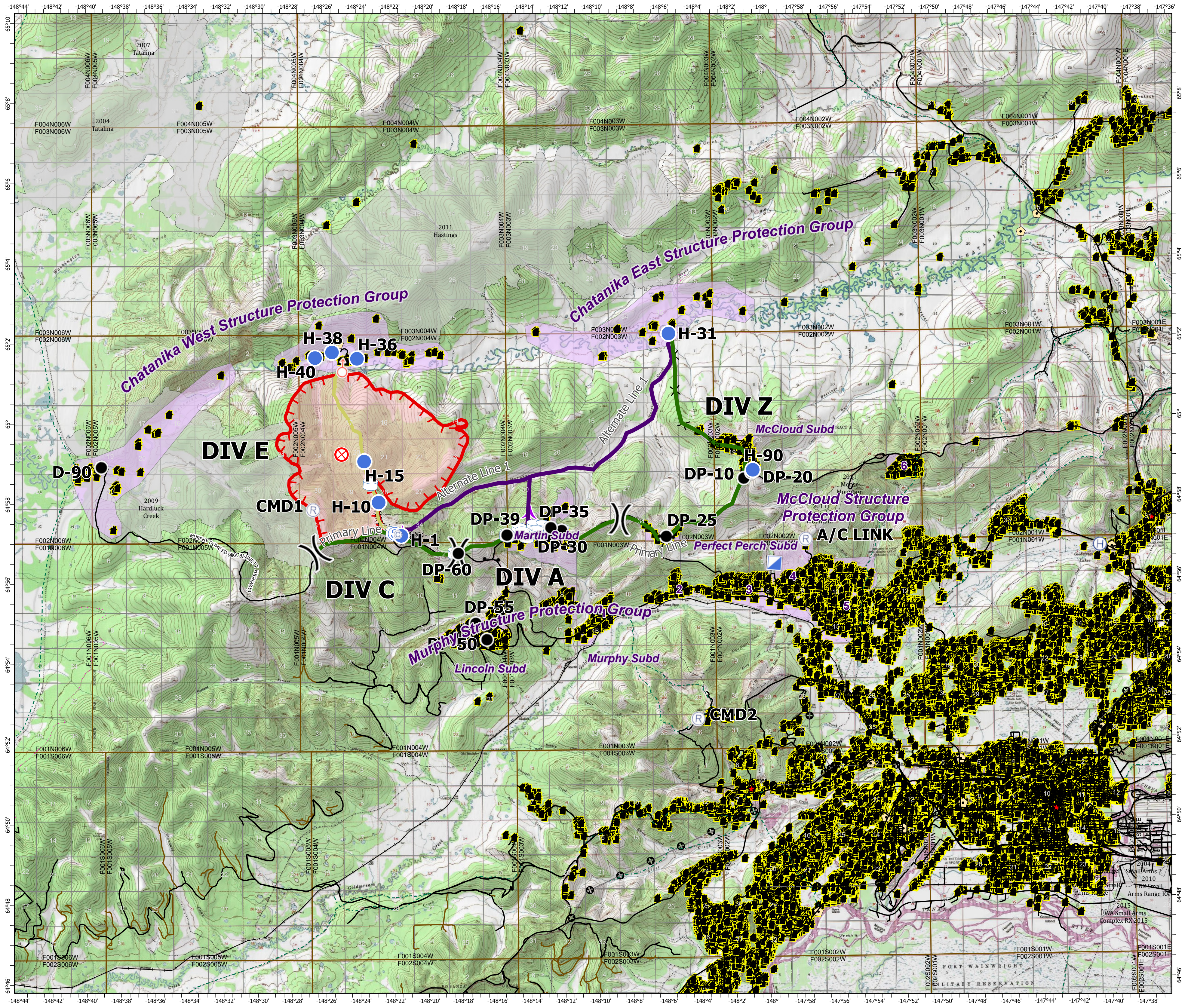


**319 Shovel Creek Operations Vicinity Map**  
 Approx. 10,639 ac.  
 as of 6/30/2019



7/1/2019  
 Operational Period

- Helispot
- ⊙ Camp
- Drop Point
- ⊗ Fire Origin
- Gate
- ⊕ Helibase
- ▢ Incident Command Post
- Ⓡ Repeater
- ⊕ Spot Fire
- Ⓢ Staging Area
- ) Division Break
- Ⓜ Water Tank
- Uncontrolled Fire Edge
- Completed Line
- x x Completed Dozer Line
- x Proposed Dozer Line
- 7-Mile Trail
- Alternate Lines
- Primary Line
- Wildfire Daily Fire Perimeter
- Electrical Lines
- ⚡ Communications
- Other
- Structure
- ▭ Structure Protection Areas
- ▭ Fire History Less than 20 years old



Alaska Albers Projection  
 NAD 83 Datum

0 0.25 0.5 1  
 Miles