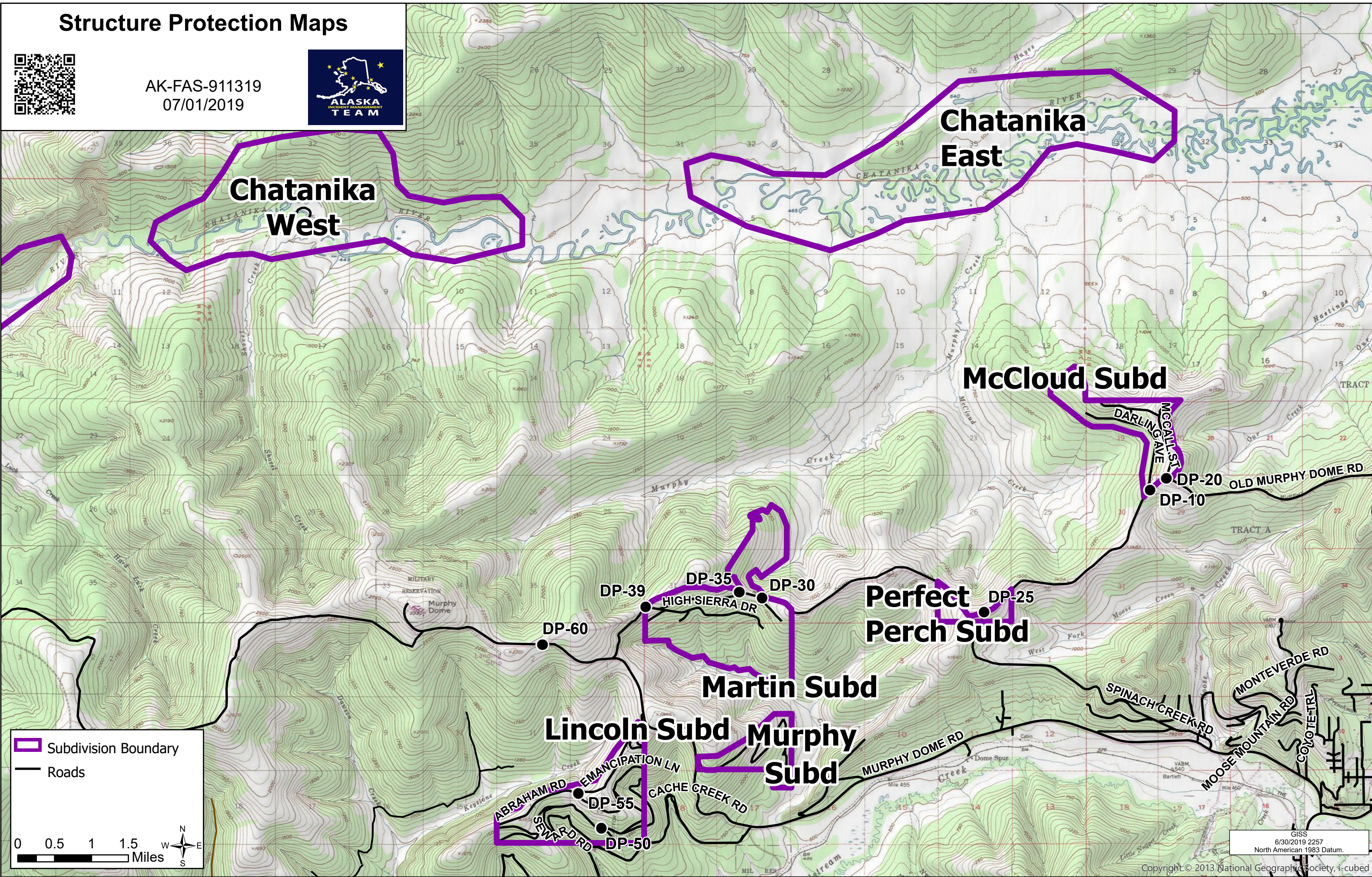


# Structure Protection Maps



AK-FAS-911319  
07/01/2019



Legend:  
Subdivision Boundary  
Roads

Scale: 0 0.5 1 1.5 Miles

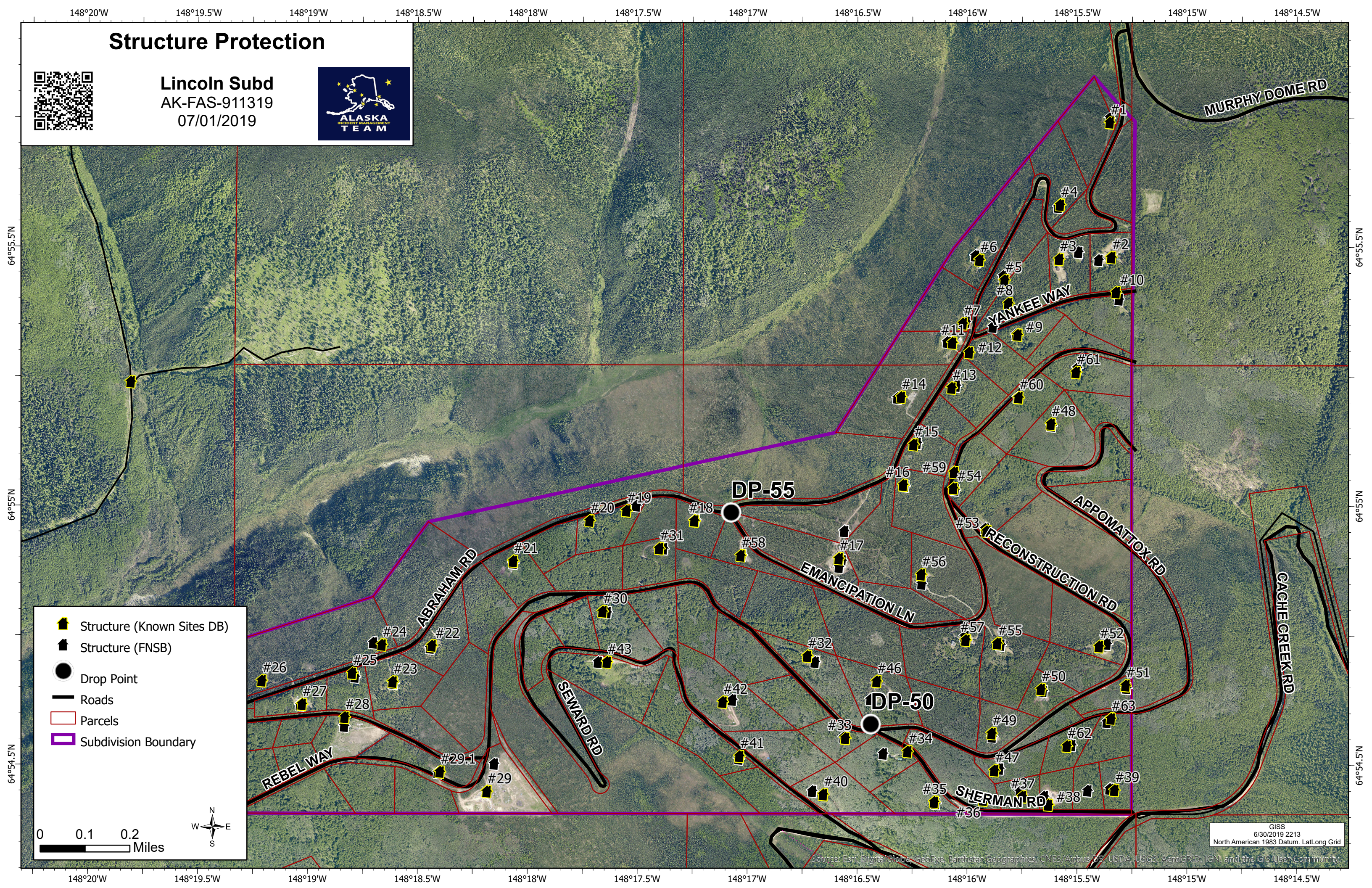
North Arrow

GISS  
6/30/2019 2257  
North American 1983 Datum.

Copyright © 2013 National Geographic Society, i-cubed

# Structure Protection

Lincoln Subd  
AK-FAS-911319  
07/01/2019



- Structure (Known Sites DB)
- Structure (FNSB)
- Drop Point
- Roads
- Parcels
- Subdivision Boundary

0 0.1 0.2 Miles



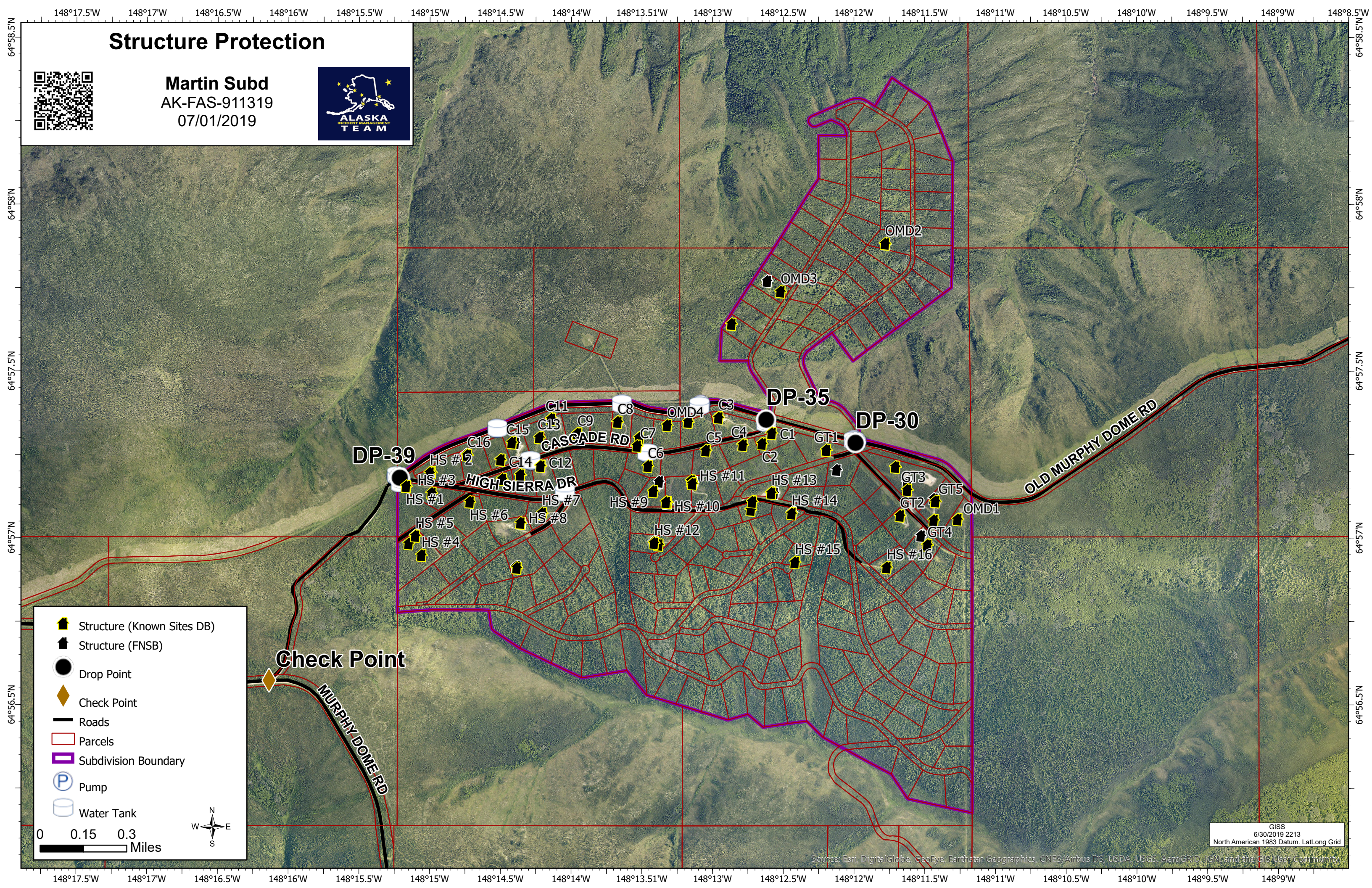
GISS  
6/30/2019 2213  
North American 1983 Datum, Lat/Long Grid

Source: Esri, DigitalGlobe, GeoEye, Earthstar Geographics, CNES/Airbus DS, USDA, USGS, AeroGRID, IGN, and the GIS User Community

# Structure Protection



Martin Subd  
AK-FAS-911319  
07/01/2019



- Structure (Known Sites DB)
- Structure (FNSB)
- Drop Point
- Check Point
- Roads
- Parcels
- Subdivision Boundary
- Pump
- Water Tank

0 0.15 0.3 Miles

GISS  
6/30/2019 2213  
North American 1983 Datum, LatLong Grid

Source: Esri, DigitalGlobe, GeoEye, Earthstar Geographics, CNES/Airbus DS, USDA, USGS, AeroGRID, IGN, and the GIS User Community

# Structure Protection

McCloud Subd  
AK-FAS-911319  
07/01/2019



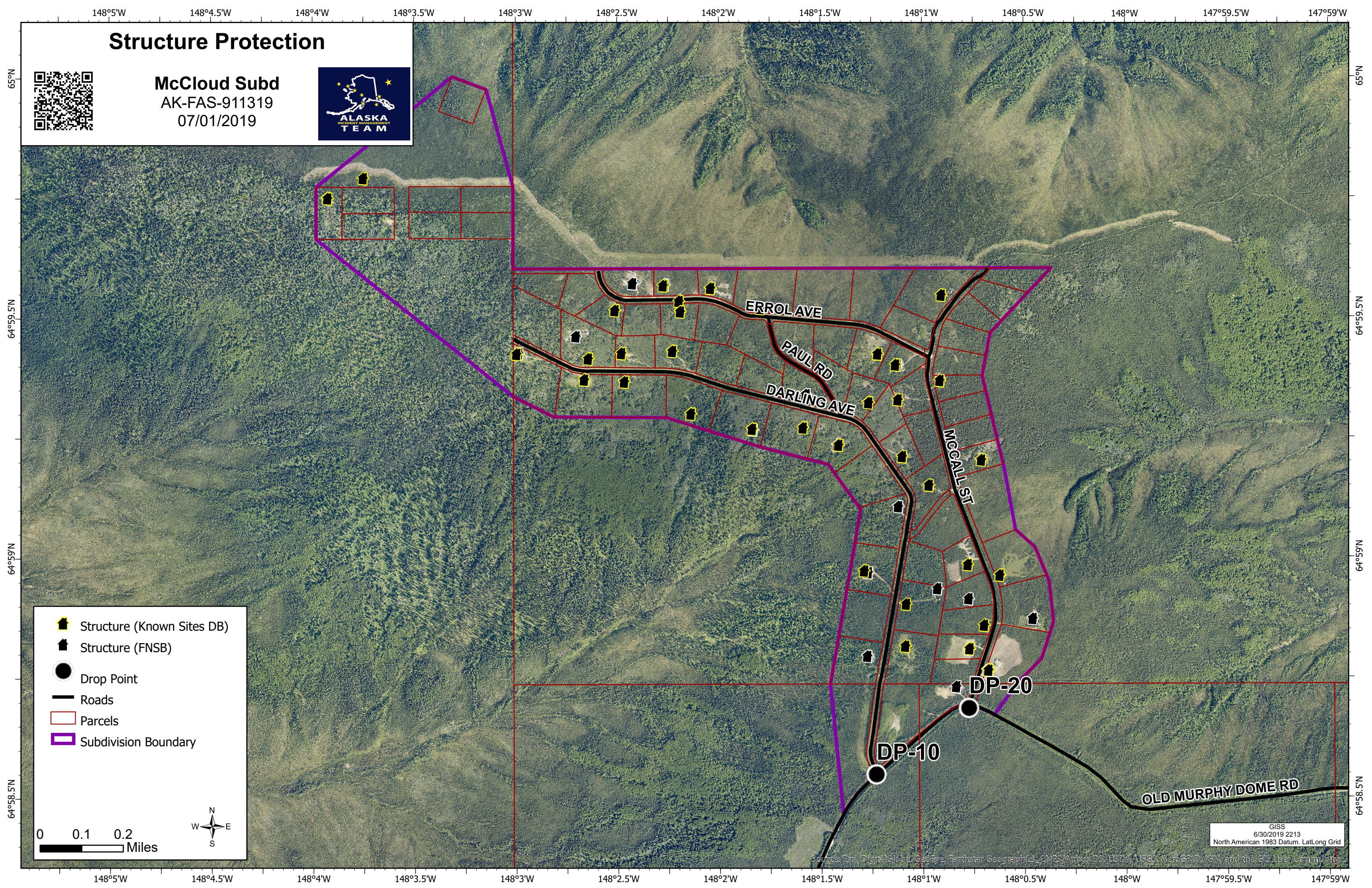
- Structure (Known Sites DB)
- Structure (FNSB)
- Drop Point
- Roads
- Parcels
- Subdivision Boundary

0 0.1 0.2 Miles



GISS  
6/30/2019 2213  
North American 1983 Datum, LatLong Grid

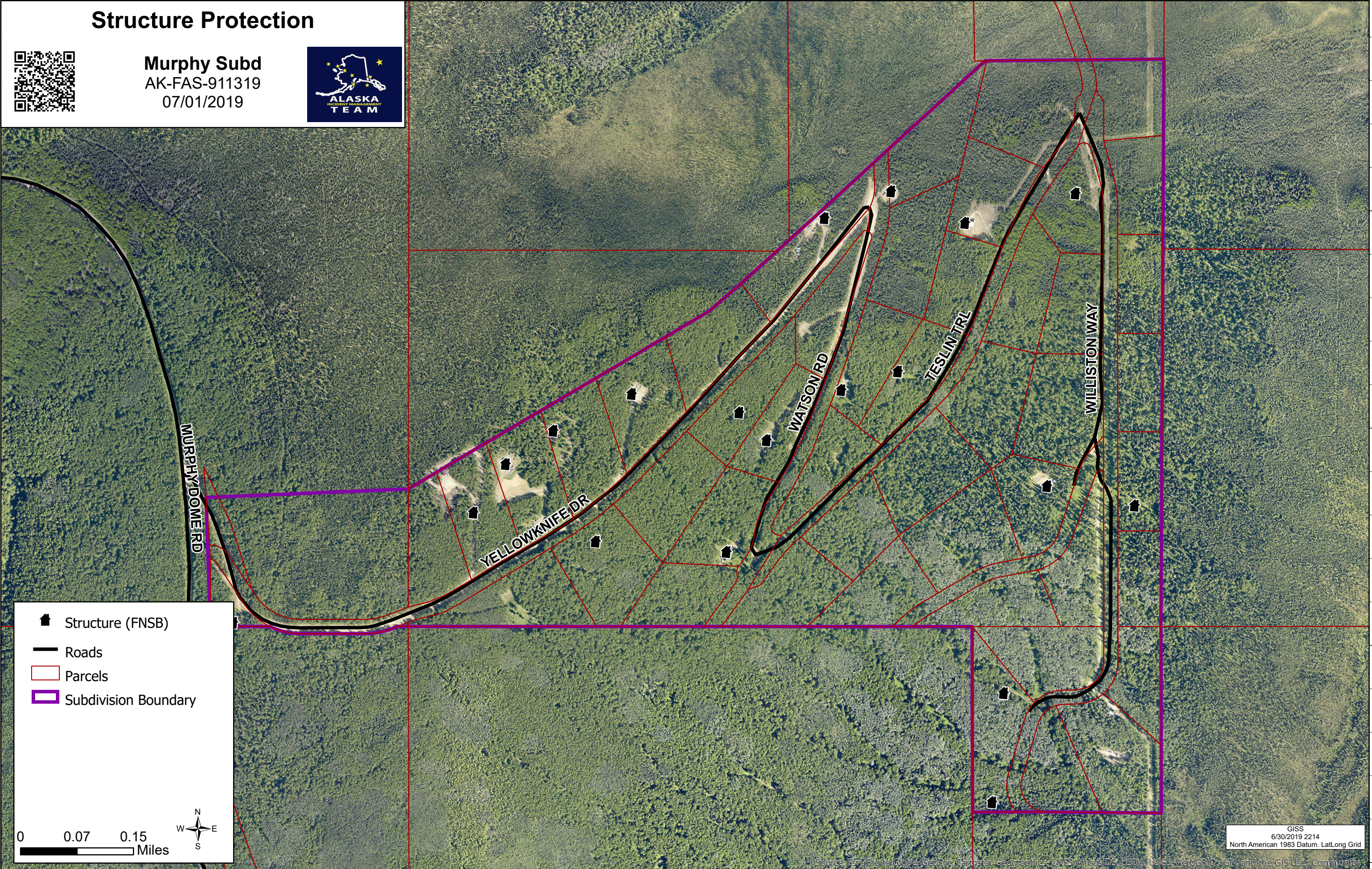
Source: Esri, DigitalGlobe, GeoEye, Earthstar Geographics, CNES/Airbus DS, USDA, USGS, AeroGRID, IGN, and the GIS User Community



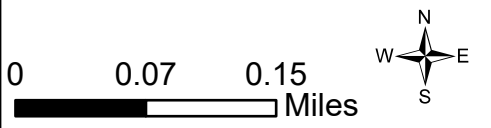
# Structure Protection



Murphy Subd  
AK-FAS-911319  
07/01/2019



- Structure (FNSB)
- Roads
- Parcels
- Subdivision Boundary



GISS  
6/30/2019 2214  
North American 1983 Datum, LatLong Grid

Source: Esri, DigitalGlobe, GeoEye, Earthstar Geographics, CNES/Airbus DS, USDA, USGS, AeroGRID, IGN, and the GIS User Community

148°7'W

148°6.5'W

148°6.01'W

148°5.5'W

148°5'W

# Structure Protection

**Perfect Perch Subd**  
AK-FAS-911319  
07/01/2019



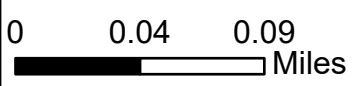
64°57.5'N

64°57.5'N

64°57'N

64°57'N

- Structure (Known Sites DB)
- Structure (FNSB)
- Drop Point
- Check Point
- Roads
- Parcels
- Subdivision Boundary



GISS  
6/30/2019 2214  
North American 1983 Datum, Lat/Long Grid

Source: Esri, DigitalGlobe, GeoEye, Earthstar Geographics, CNES/Airbus DS, USDA, USGS, AeroGRID, IGN, and the GIS User Community

