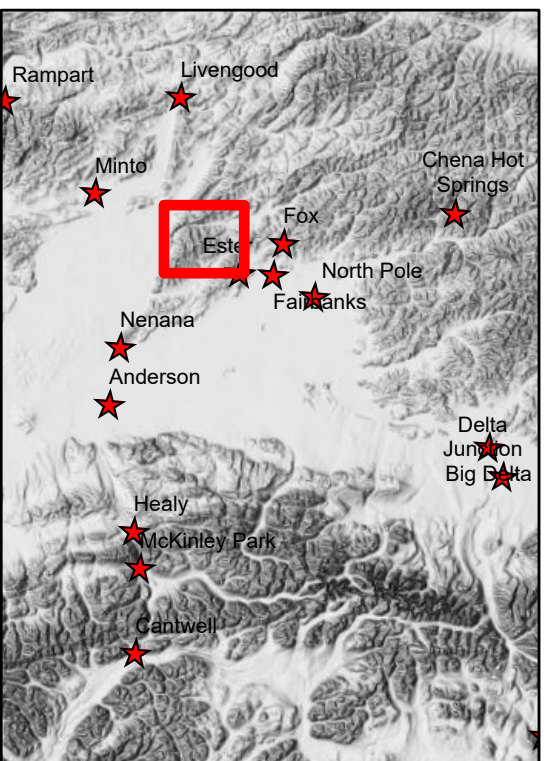


319 Shovel Creek Operations Map
 Approx. 10,008 ac.
 as of 7/01/2019



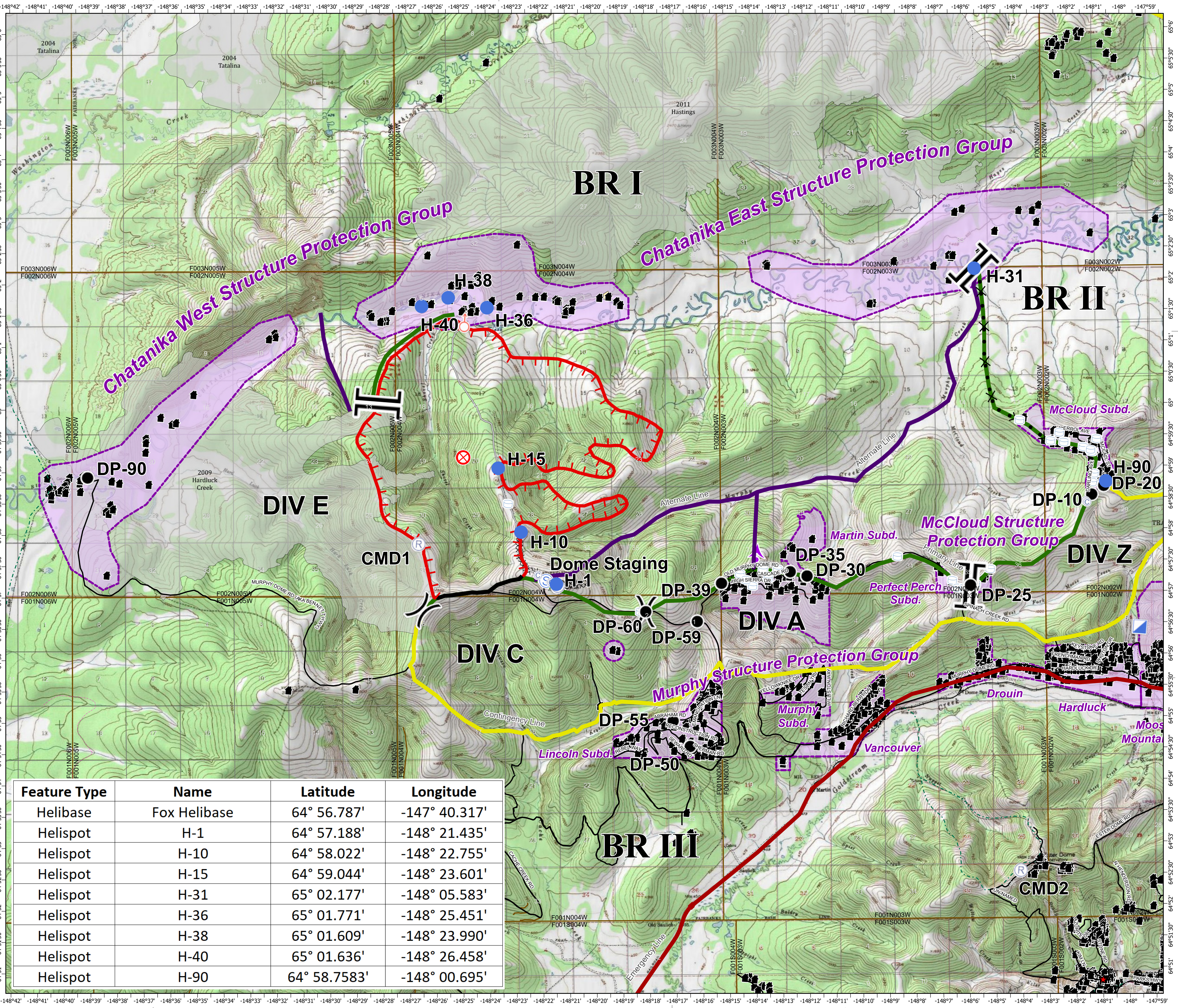
7/03/2019
 Operational Period

- Water Tank
- Helispot
- Camp
- Drop Point
- Fire Origin
- Security Checkpoint
- Incident Command Post
- Repeater
- Spot Fire
- Staging Area
- Division Break
- Branch Break
- Uncontrolled Fire Edge
- Completed Line
- 7-Mile Trail
- Completed Dozer Line
- Proposed Dozer Line
- Primary Line
- Alternate Lines
- Contingency Line
- Emergency Line
- RS2477
- Trails
- Electrical Lines
- Communications
- Other
- Structure
- Fire History Less than 20 years old
- Structure Protection Areas



Alaska Albers Projection
 NAD 83 Datum

0 0.25 0.5 1
 Miles



Feature Type	Name	Latitude	Longitude
Helibase	Fox Helibase	64° 56.787'	-147° 40.317'
Helispot	H-1	64° 57.188'	-148° 21.435'
Helispot	H-10	64° 58.022'	-148° 22.755'
Helispot	H-15	64° 59.044'	-148° 23.601'
Helispot	H-31	65° 02.177'	-148° 05.583'
Helispot	H-36	65° 01.771'	-148° 25.451'
Helispot	H-38	65° 01.609'	-148° 23.990'
Helispot	H-40	65° 01.636'	-148° 26.458'
Helispot	H-90	64° 58.7583'	-148° 00.695'