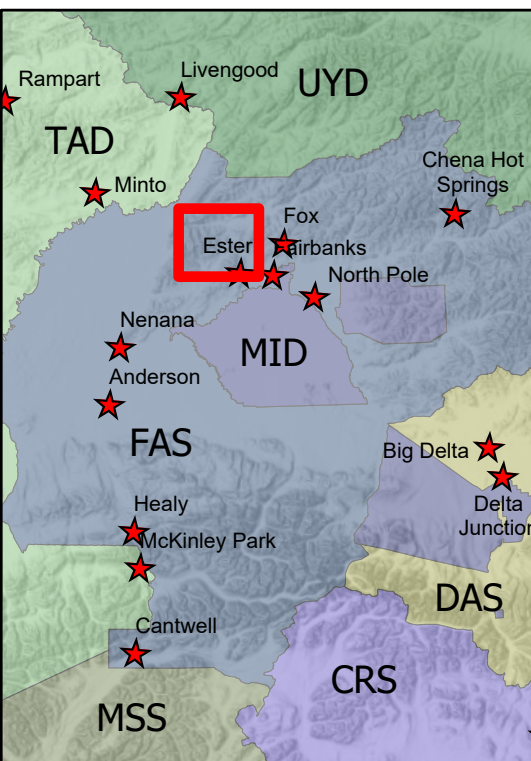


**319 Shovel Creek Plans**  
**MAP Map**  
 Approx. 10,008 ac.  
 as of 7/01/2019



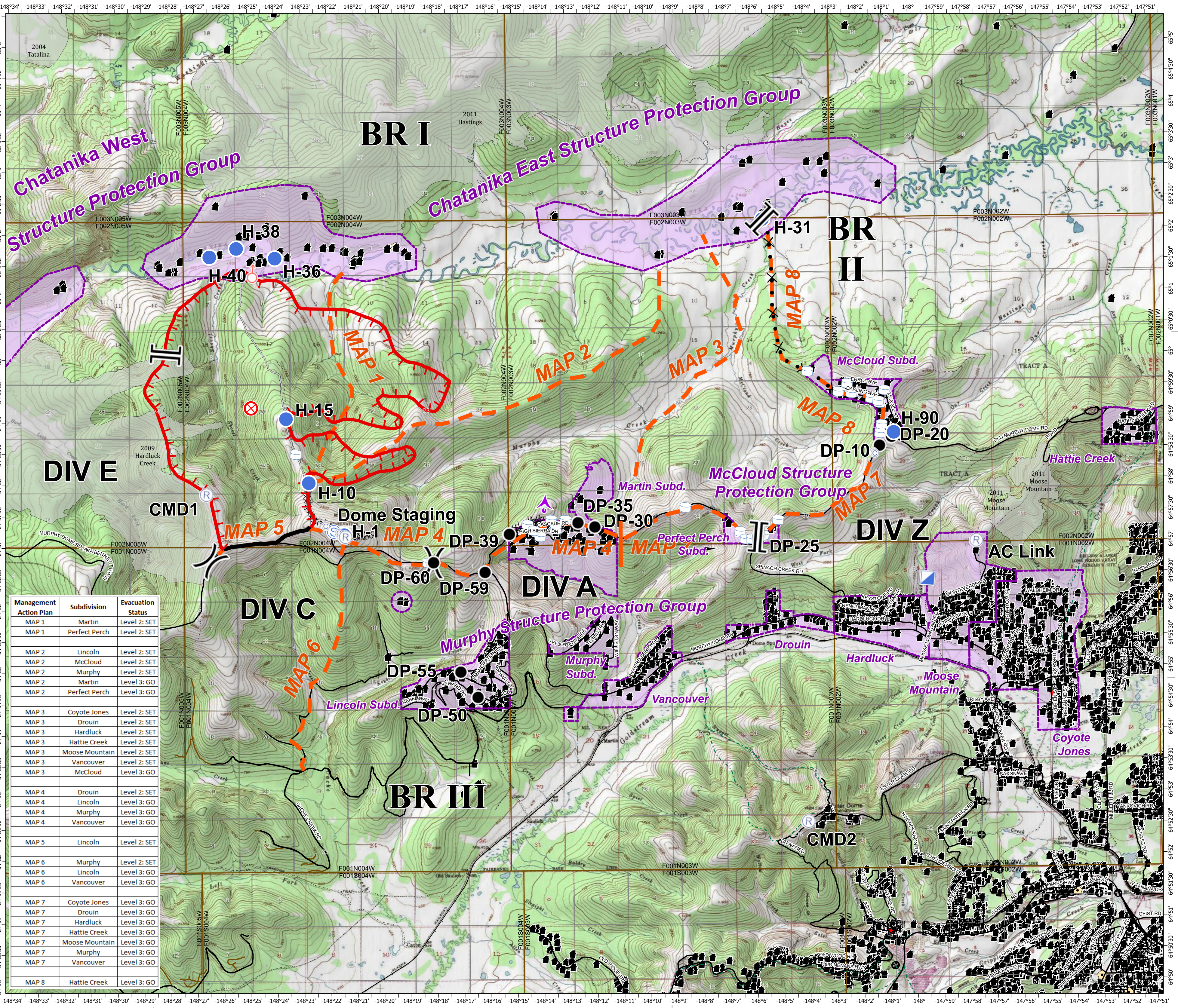
7/03/2019  
 Operational Period

- Water Tank
- Helispot
- Camp
- Drop Point
- Fire Origin
- Gate
- Incident Command Post
- Repeater
- Spot Fire
- Staging Area
- Division Break
- Branch Break
- Uncontrolled Fire Edge
- Completed Line
- 7-Mile Trail
- Completed Dozer Line
- Proposed Dozer Line
- Management Action Point
- RS2477
- Trails
- Electrical Lines
- Less than 1800'
- Camp
- Communications
- Other
- Structure
- Fire History Less than 20 years old
- Structure Protection Areas



Alaska Albers Projection  
 NAD 83 Datum

0 0.25 0.5 1  
 Miles



Management Action Plan	Subdivision	Evacuation Status
MAP 1	Martin	Level 2: SET
MAP 1	Perfect Perch	Level 2: SET
MAP 2	Lincoln	Level 2: SET
MAP 2	McCloud	Level 2: SET
MAP 2	Murphy	Level 2: SET
MAP 2	Martin	Level 3: GO
MAP 2	Perfect Perch	Level 3: GO
MAP 3	Coyote Jones	Level 2: SET
MAP 3	Drouin	Level 2: SET
MAP 3	Hardluck	Level 2: SET
MAP 3	Hattie Creek	Level 2: SET
MAP 3	Moose Mountain	Level 2: SET
MAP 3	Vancouver	Level 2: SET
MAP 3	McCloud	Level 3: GO
MAP 4	Drouin	Level 2: SET
MAP 4	Lincoln	Level 3: GO
MAP 4	Murphy	Level 3: GO
MAP 4	Vancouver	Level 3: GO
MAP 5	Lincoln	Level 2: SET
MAP 6	Murphy	Level 2: SET
MAP 6	Lincoln	Level 3: GO
MAP 6	Vancouver	Level 3: GO
MAP 7	Coyote Jones	Level 3: GO
MAP 7	Drouin	Level 3: GO
MAP 7	Hardluck	Level 3: GO
MAP 7	Hattie Creek	Level 3: GO
MAP 7	Moose Mountain	Level 3: GO
MAP 7	Murphy	Level 3: GO
MAP 7	Vancouver	Level 3: GO
MAP 8	Hattie Creek	Level 3: GO