

Structure Protection Maps



AK-FAS-911319
07/03/2019



**Chatanika
West**

**Chatanika
East**

**McCloud Subd
Moose**

Hattie Creek

**Perfect
Perch Subd
Mountain**

**Coyote
Jones**

Murphy Subd

Martin Subd

Drouin

Hardluck

Lincoln Subd

Vancouver

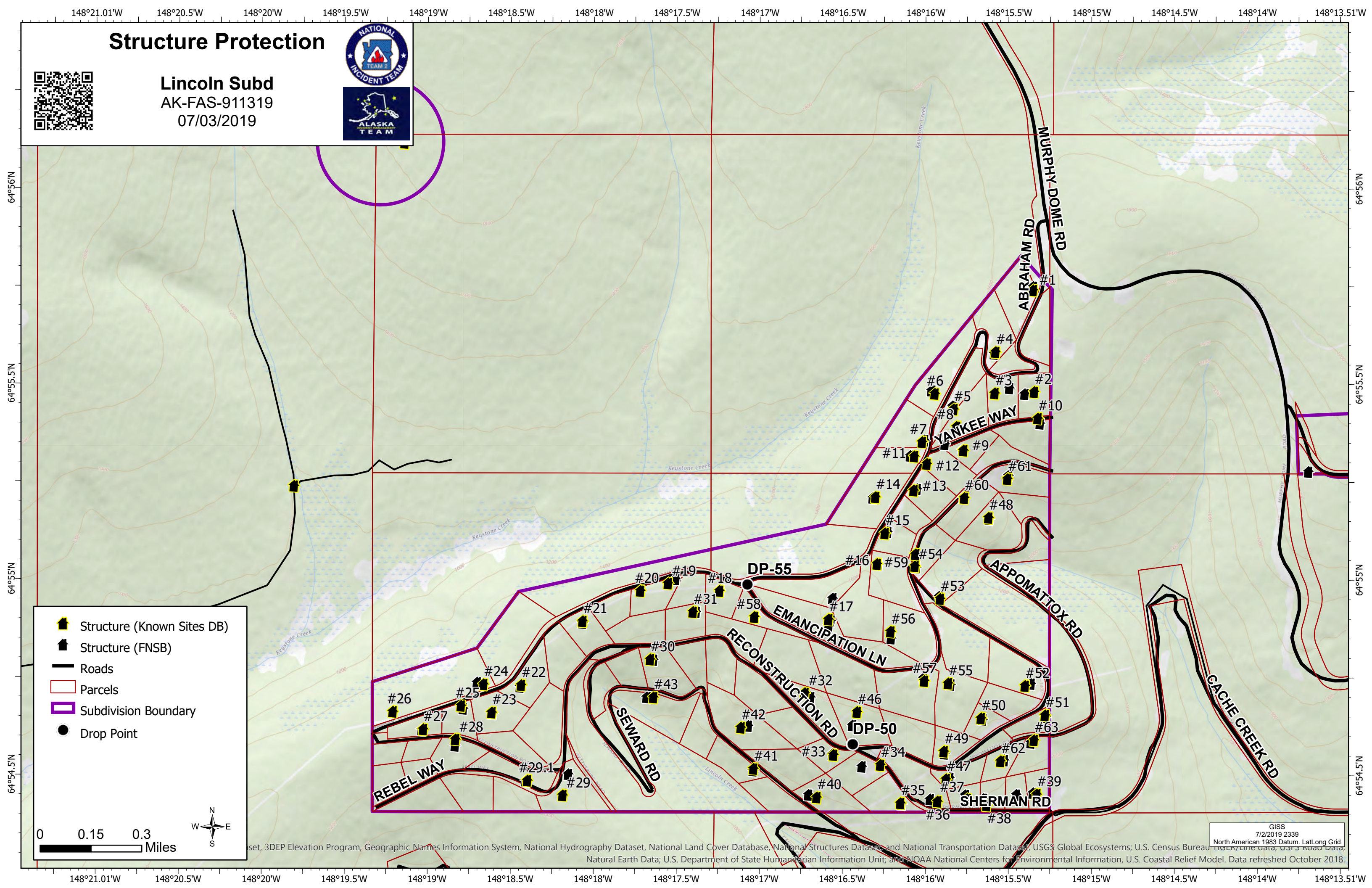
Structure Protection Boundary
Roads

0 0.5 1 1.5 Miles

Structure Protection



Lincoln Subd
AK-FAS-911319
07/03/2019



- Structure (Known Sites DB)
- Structure (FNSB)
- Roads
- Parcels
- Subdivision Boundary
- Drop Point

0 0.15 0.3 Miles

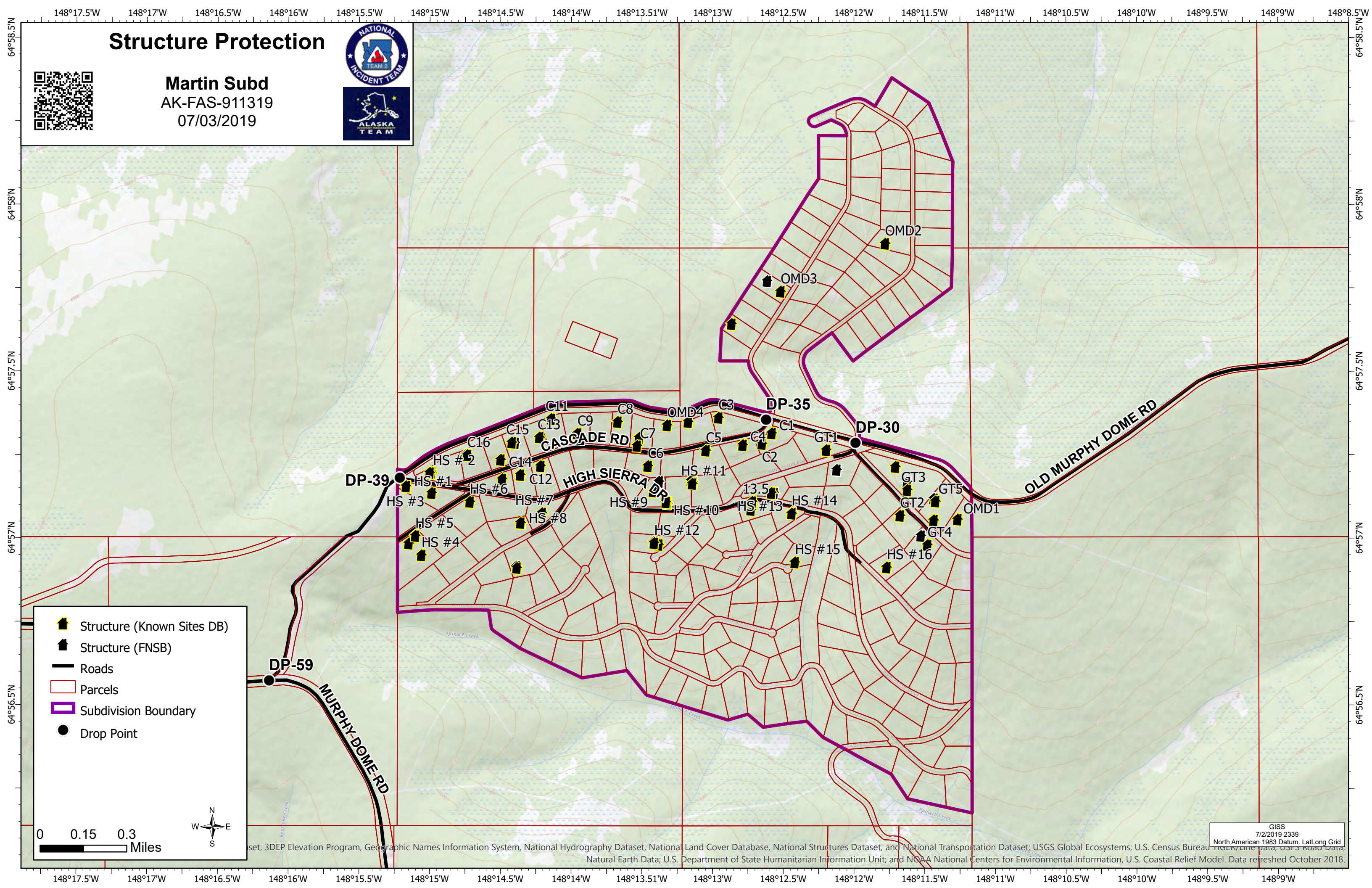


GISS 7/2/2019 2339
North American 1983 Datum, Lat/Long Grid
Source: 3DEP Elevation Program, Geographic Names Information System, National Hydrography Dataset, National Land Cover Database, National Structures Dataset, and National Transportation Dataset; USGS Global Ecosystems; U.S. Census Bureau TIGER/Line data, USFS Road Data, Natural Earth Data; U.S. Department of State Humanitarian Information Unit; and NOAA National Centers for Environmental Information, U.S. Coastal Relief Model. Data refreshed October 2018.

Structure Protection



Martin Subd
AK-FAS-911319
07/03/2019



- Structure (Known Sites DB)
- Structure (FNSB)
- Roads
- Parcels
- Subdivision Boundary
- Drop Point

0 0.15 0.3 Miles



GISS 7/2/2019 2339
North American 1983 Datum, Lat/Long Grid
Source: 3DEP Elevation Program, Geographic Names Information System, National Hydrography Dataset, National Land Cover Database, National Structures Dataset, and National Transportation Dataset; USGS Global Ecosystems; U.S. Census Bureau TIGER/Line data; USFS Road Data; Natural Earth Data; U.S. Department of State Humanitarian Information Unit; and NOAA National Centers for Environmental Information, U.S. Coastal Relief Model. Data refreshed October 2018.

Structure Protection

McCloud Subd
AK-FAS-911319
07/03/2019

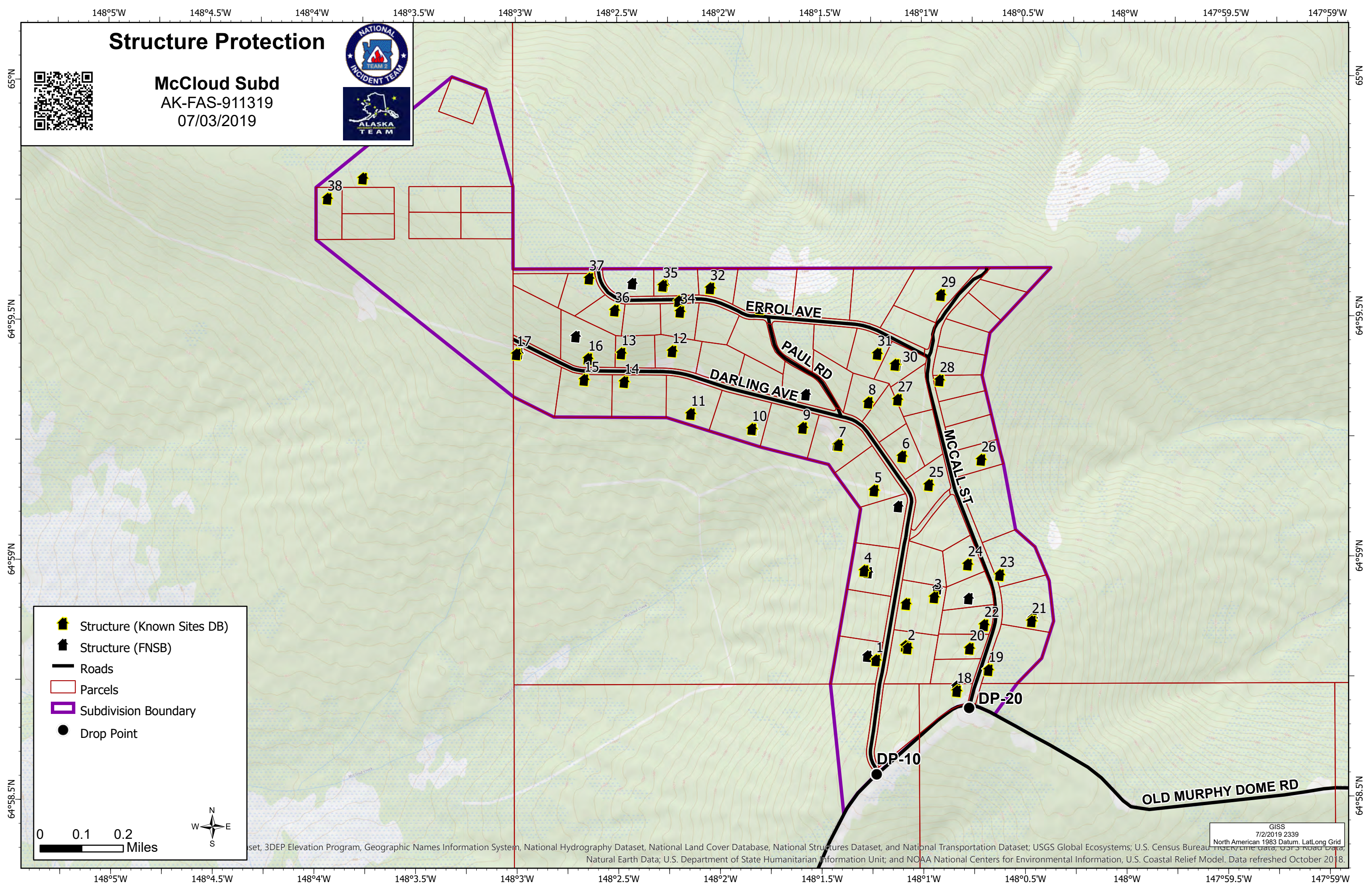


- Structure (Known Sites DB)
- Structure (FNSB)
- Roads
- Parcels
- Subdivision Boundary
- Drop Point

0 0.1 0.2 Miles



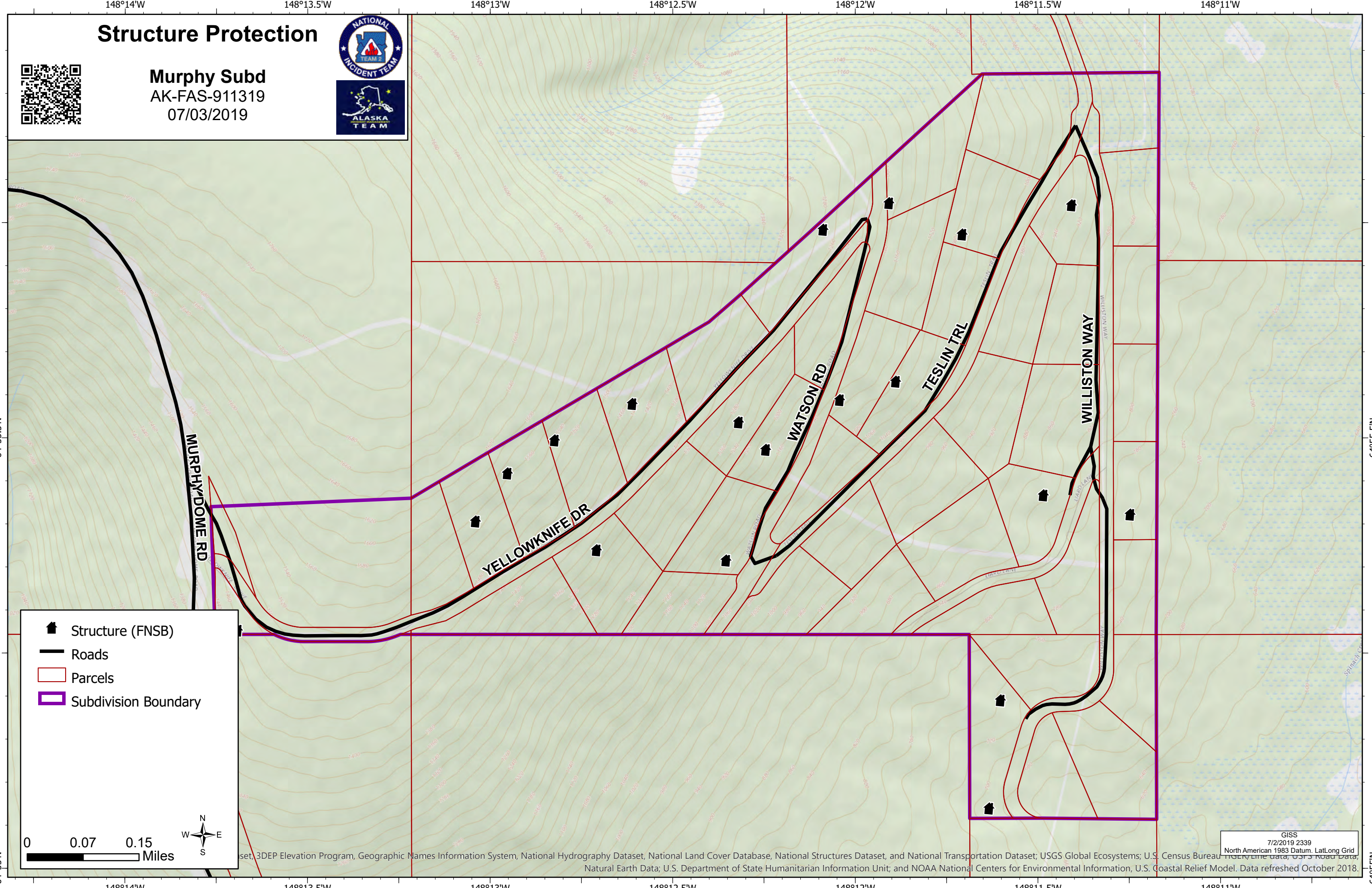
GIS 7/2/2019 2339
North American 1983 Datum, Lat/Long Grid
Source: 3DEP Elevation Program, Geographic Names Information System, National Hydrography Dataset, National Land Cover Database, National Structures Dataset, and National Transportation Dataset; USGS Global Ecosystems; U.S. Census Bureau TIGER/Line data, USFS Road Data, Natural Earth Data; U.S. Department of State Humanitarian Information Unit; and NOAA National Centers for Environmental Information, U.S. Coastal Relief Model. Data refreshed October 2018.



Structure Protection



Murphy Subd
AK-FAS-911319
07/03/2019



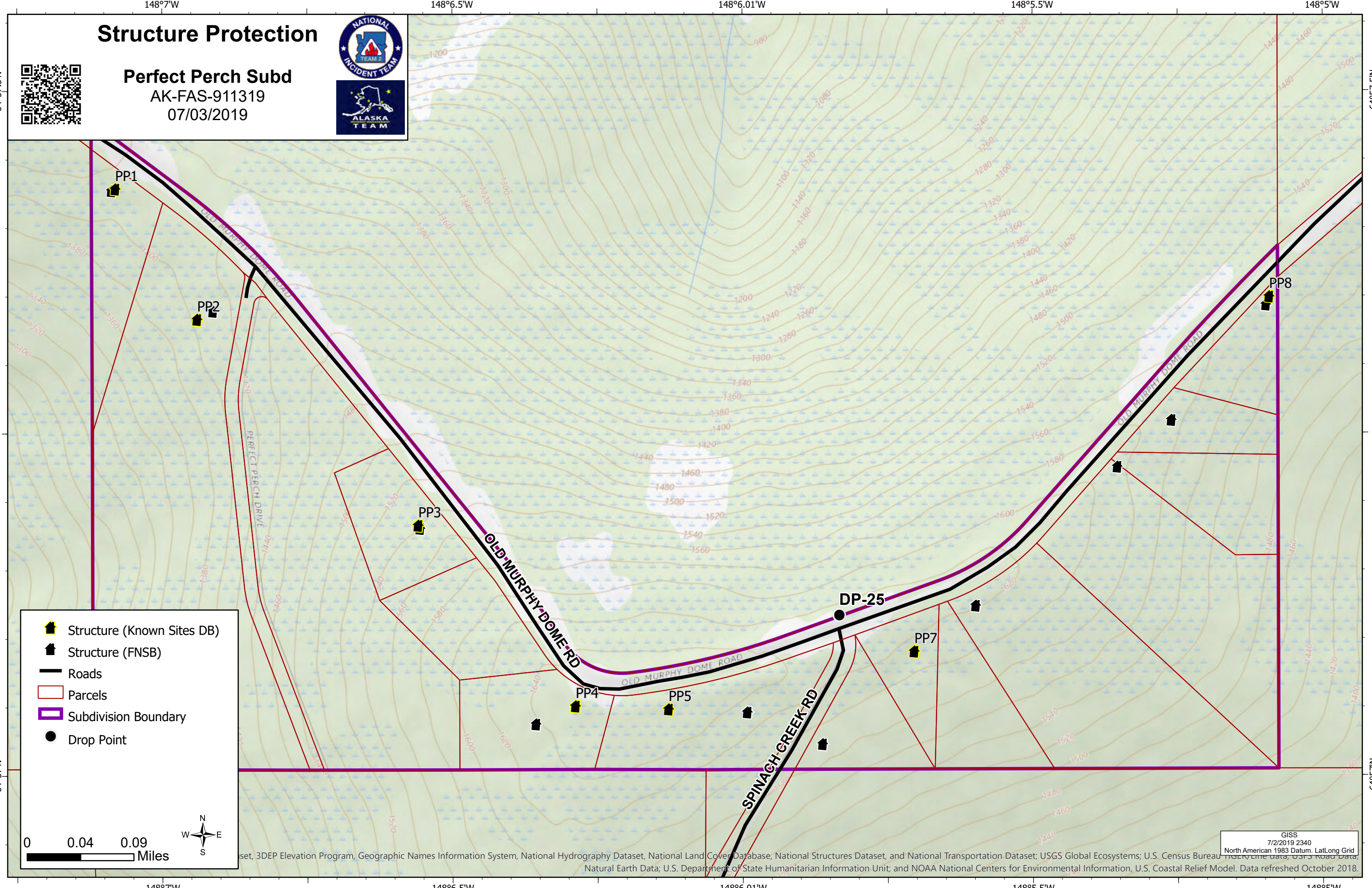
Structure (FNSB)
 Roads
 Parcels
 Subdivision Boundary

0 0.07 0.15 Miles

GISS 7/2/2019 2339
North American 1983 Datum, Lat/Long Grid
set, 3DEP Elevation Program, Geographic Names Information System, National Hydrography Dataset, National Land Cover Database, National Structures Dataset, and National Transportation Dataset; USGS Global Ecosystems; U.S. Census Bureau TIGER/Line data, USFS Road Data, Natural Earth Data; U.S. Department of State Humanitarian Information Unit; and NOAA National Centers for Environmental Information, U.S. Coastal Relief Model. Data refreshed October 2018.

Structure Protection

Perfect Perch Subd
AK-FAS-911319
07/03/2019



- Structure (Known Sites DB)
- Structure (FNSB)
- Roads
- Parcels
- Subdivision Boundary
- Drop Point

0 0.04 0.09 Miles



GISS 7/2/2019 2340
North American 1983 Datum, Lat/Long Grid
Source: 3DEP Elevation Program, Geographic Names Information System, National Hydrography Dataset, National Land Cover Database, National Structures Dataset, and National Transportation Dataset; USGS Global Ecosystems; U.S. Census Bureau TIGER/Line data, USFS Road Data, Natural Earth Data; U.S. Department of State Humanitarian Information Unit; and NOAA National Centers for Environmental Information, U.S. Coastal Relief Model. Data refreshed October 2018.