

**SHOVEL CREEK FIRE
AK-FAS-911319
Aviation Map**

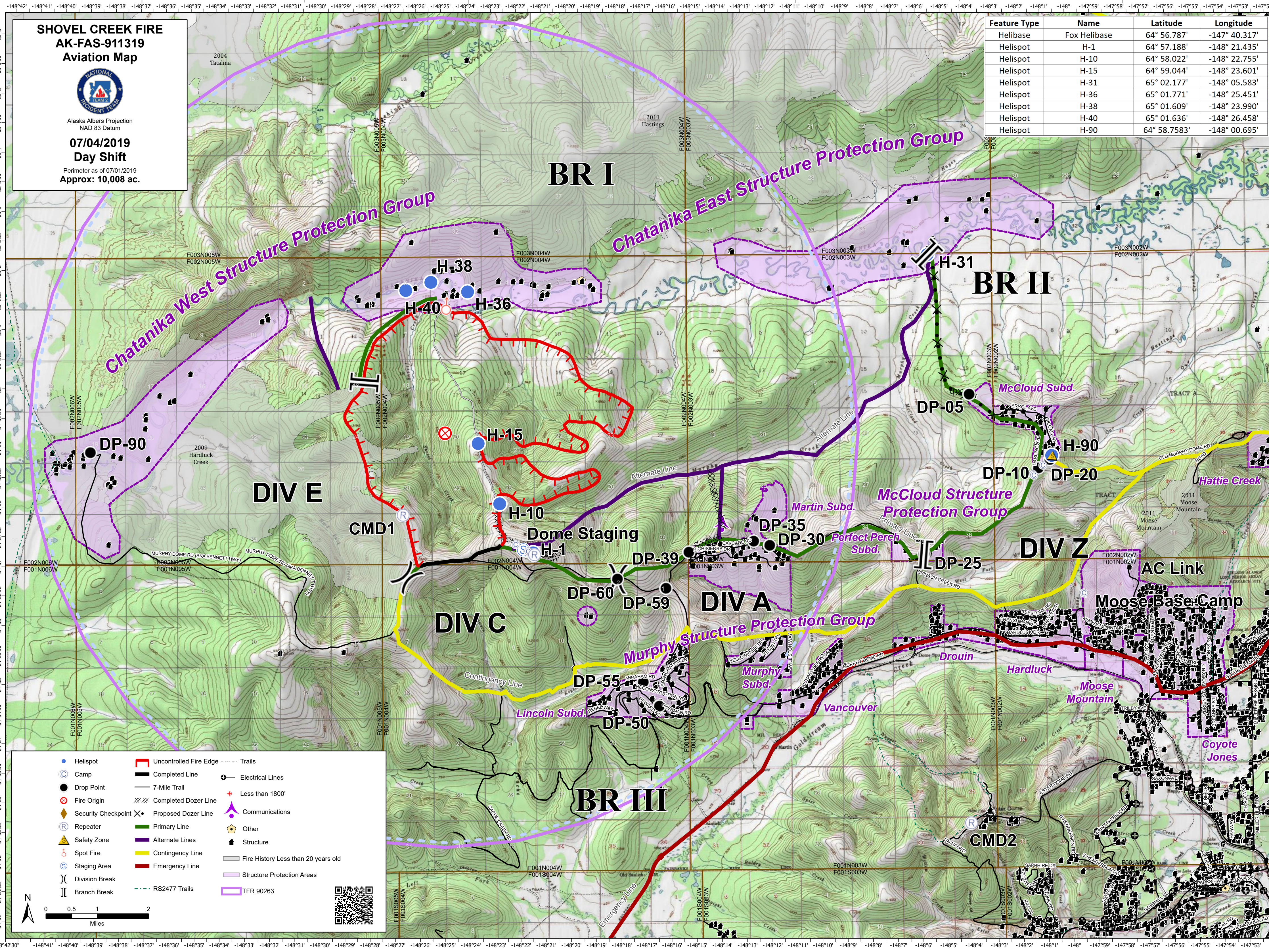


Alaska Albers Projection
NAD 83 Datum

**07/04/2019
Day Shift**

Perimeter as of 07/01/2019
Approx: 10,008 ac.

Feature Type	Name	Latitude	Longitude
Helibase	Fox Helibase	64° 56.787'	-147° 40.317'
Helispot	H-1	64° 57.188'	-148° 21.435'
Helispot	H-10	64° 58.022'	-148° 22.755'
Helispot	H-15	64° 59.044'	-148° 23.601'
Helispot	H-31	65° 02.177'	-148° 05.583'
Helispot	H-36	65° 01.771'	-148° 25.451'
Helispot	H-38	65° 01.609'	-148° 23.990'
Helispot	H-40	65° 01.636'	-148° 26.458'
Helispot	H-90	64° 58.7583'	-148° 00.695'



Helispot	Uncontrolled Fire Edge	Trails
Camp	Completed Line	Electrical Lines
Drop Point	7-Mile Trail	Less than 1800'
Fire Origin	Completed Dozer Line	Communications
Security Checkpoint	Proposed Dozer Line	Other
Repeater	Primary Line	Structure
Safety Zone	Alternate Lines	Fire History Less than 20 years old
Spot Fire	Contingency Line	Structure Protection Areas
Staging Area	Emergency Line	TFR 90263
Division Break	RS2477 Trails	
Branch Break		

