

**SHOVEL CREEK FIRE
AK-FAS-911319
Aviation Map**

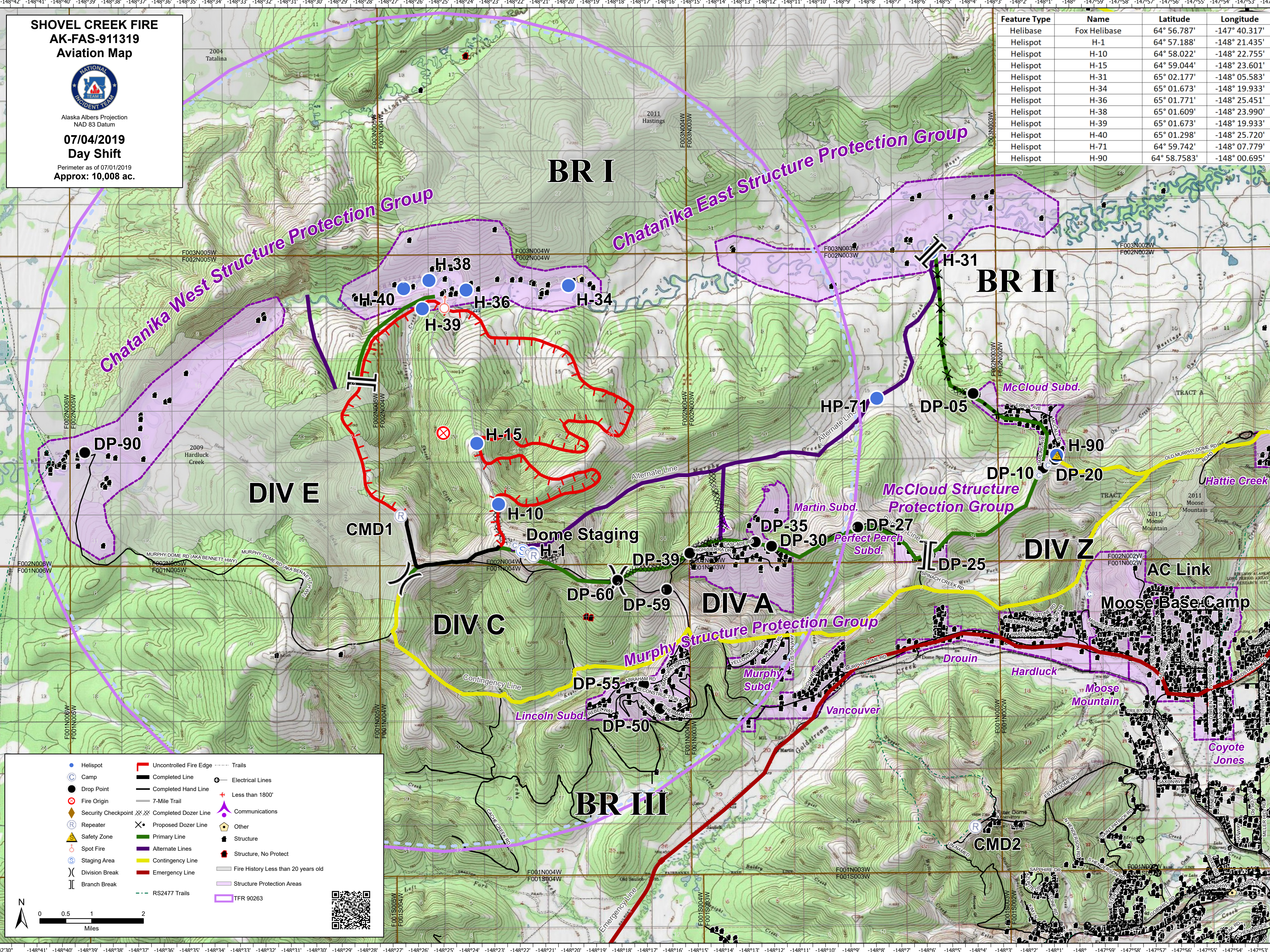


Alaska Albers Projection
NAD 83 Datum

**07/04/2019
Day Shift**

Perimeter as of 07/01/2019
Approx: 10,008 ac.

Feature Type	Name	Latitude	Longitude
Helibase	Fox Helibase	64° 56.787'	-147° 40.317'
Helispot	H-1	64° 57.188'	-148° 21.435'
Helispot	H-10	64° 58.022'	-148° 22.755'
Helispot	H-15	64° 59.044'	-148° 23.601'
Helispot	H-31	65° 02.177'	-148° 05.583'
Helispot	H-34	65° 01.673'	-148° 19.933'
Helispot	H-36	65° 01.771'	-148° 25.451'
Helispot	H-38	65° 01.609'	-148° 23.990'
Helispot	H-39	65° 01.673'	-148° 19.933'
Helispot	H-40	65° 01.298'	-148° 25.720'
Helispot	H-71	64° 59.742'	-148° 07.779'
Helispot	H-90	64° 58.7583'	-148° 00.695'



- Helispot
- C Camp
- Drop Point
- ⊗ Fire Origin
- ◆ Security Checkpoint
- R Repeater
- S Safety Zone
- Spot Fire
- S Staging Area
- X Division Break
- I Branch Break

- Uncontrolled Fire Edge
- Completed Line
- Completed Hand Line
- 7-Mile Trail
- Completed Dozer Line
- Proposed Dozer Line
- Primary Line
- Alternate Lines
- Contingency Line
- Emergency Line
- RS2477 Trails
- TFR 90263

- Trails
- ⊕ Electrical Lines
- + Less than 1800'
- O Other
- S Structure
- S Structure, No Protect
- S Fire History Less than 20 years old
- S Structure Protection Areas
- S TFR 90263

Scale: 0 0.5 1 2 Miles

