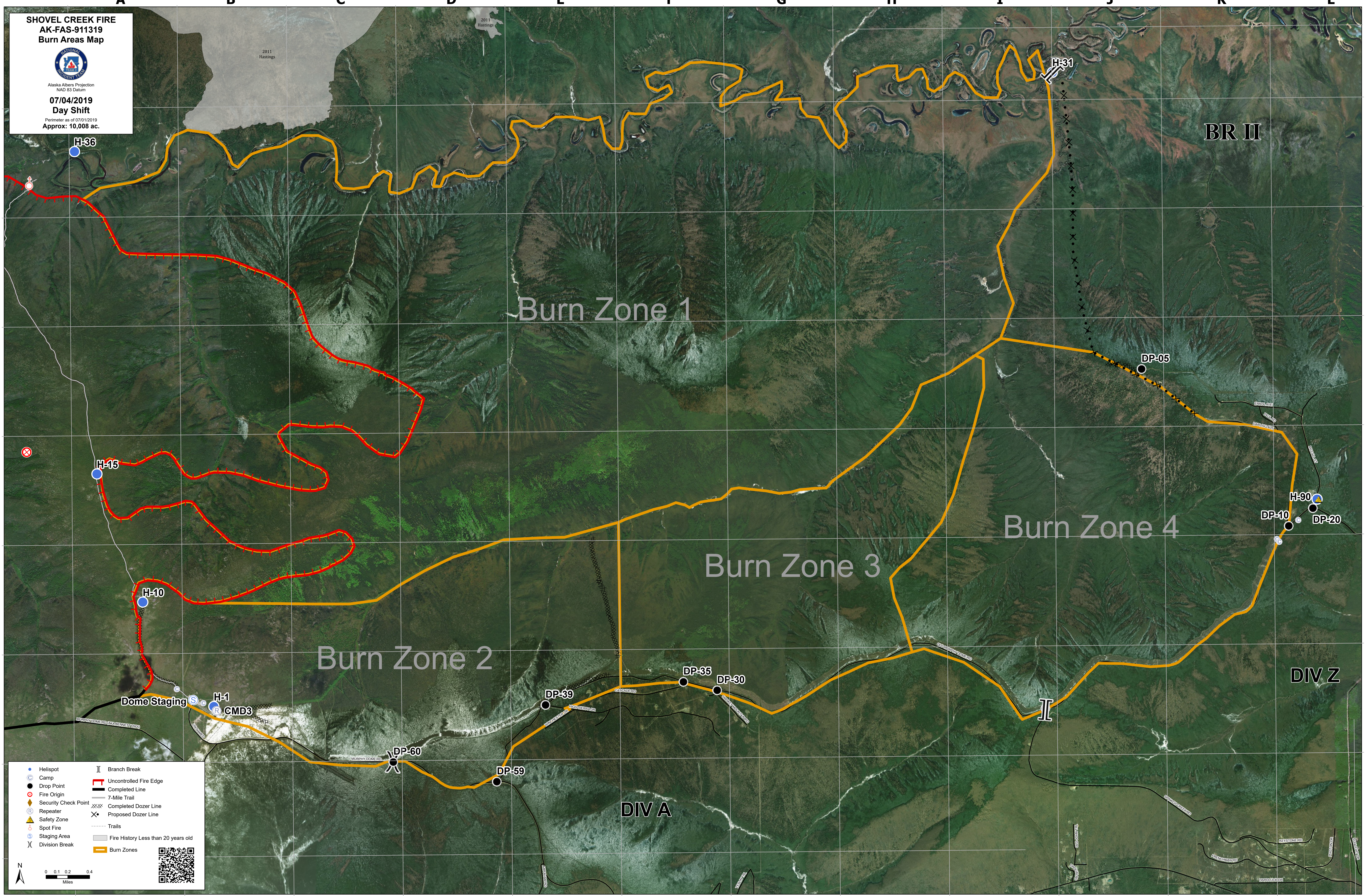


**SHOVEL CREEK FIRE
AK-FAS-911319
Burn Areas Map**



Alaska Albers Projection
NAD 83 Datum
**07/04/2019
Day Shift**
Perimeter as of 07/01/2019
Approx: 10,008 ac.



● Helispot	Branch Break
○ Camp	— Uncontrolled Fire Edge
● Drop Point	— Completed Line
○ Fire Origin	--- 7-Mile Trail
◆ Security Check Point	--- Completed Dozer Line
Ⓡ Repeater	--- Proposed Dozer Line
▲ Safety Zone	--- Trails
○ Spot Fire	--- Fire History Less than 20 years old
○ Staging Area	— Burn Zones
⌋ Division Break	

0 0.1 0.2 0.4 Miles