

SHOVEL CREEK FIRE
AK-FAS-911319
Plans MAP Map

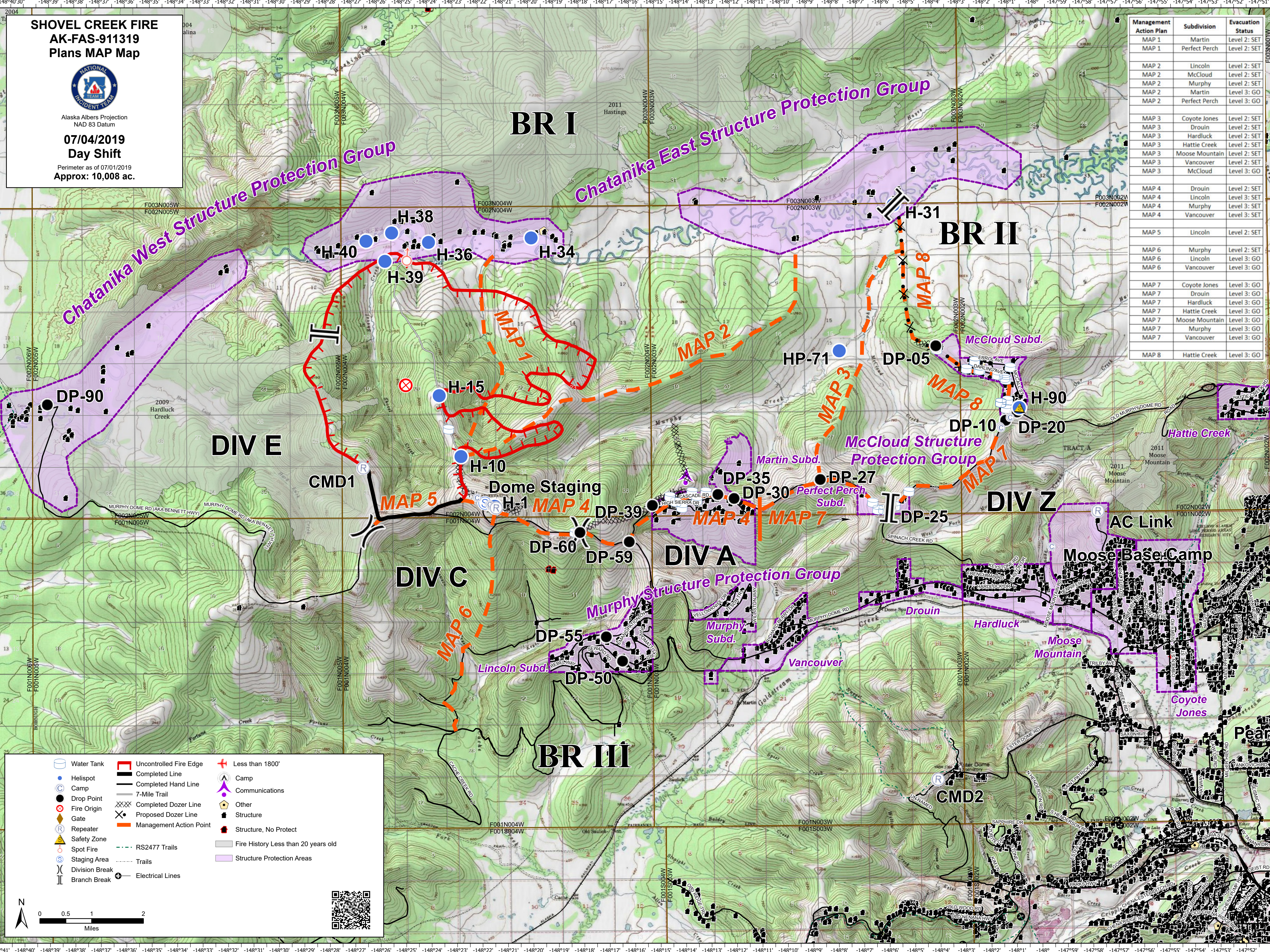


Alaska Albers Projection
 NAD 83 Datum

07/04/2019
Day Shift

Perimeter as of 07/01/2019
 Approx: 10,008 ac.

Management Action Plan	Subdivision	Evacuation Status
MAP 1	Martin	Level 2: SET
MAP 1	Perfect Perch	Level 2: SET
MAP 2	Lincoln	Level 2: SET
MAP 2	McCloud	Level 2: SET
MAP 2	Murphy	Level 2: SET
MAP 2	Martin	Level 3: GO
MAP 2	Perfect Perch	Level 3: GO
MAP 3	Coyote Jones	Level 2: SET
MAP 3	Drouin	Level 2: SET
MAP 3	Hardluck	Level 2: SET
MAP 3	Hattie Creek	Level 2: SET
MAP 3	Moose Mountain	Level 2: SET
MAP 3	Vancouver	Level 2: SET
MAP 3	McCloud	Level 2: GO
MAP 4	Drouin	Level 2: SET
MAP 4	Lincoln	Level 3: SET
MAP 4	Murphy	Level 3: SET
MAP 4	Vancouver	Level 3: SET
MAP 5	Lincoln	Level 2: SET
MAP 6	Murphy	Level 2: SET
MAP 6	Lincoln	Level 3: GO
MAP 6	Vancouver	Level 3: GO
MAP 7	Coyote Jones	Level 3: GO
MAP 7	Drouin	Level 3: GO
MAP 7	Hardluck	Level 3: GO
MAP 7	Hattie Creek	Level 3: GO
MAP 7	Moose Mountain	Level 3: GO
MAP 7	Murphy	Level 3: GO
MAP 7	Vancouver	Level 3: GO
MAP 8	Hattie Creek	Level 3: GO



	Water Tank		Uncontrolled Fire Edge		Less than 1800'
	Helispot		Completed Line		Camp
	Camp		Completed Hand Line		Communications
	Drop Point		7-Mile Trail		Other
	Fire Origin		Completed Dozer Line		Structure
	Gate		Proposed Dozer Line		Structure, No Protect
	Repeater		Management Action Point		Fire History Less than 20 years old
	Safety Zone		RS2477 Trails		Structure Protection Areas
	Spot Fire		Trails		
	Staging Area		Electrical Lines		
	Division Break				
	Branch Break				

