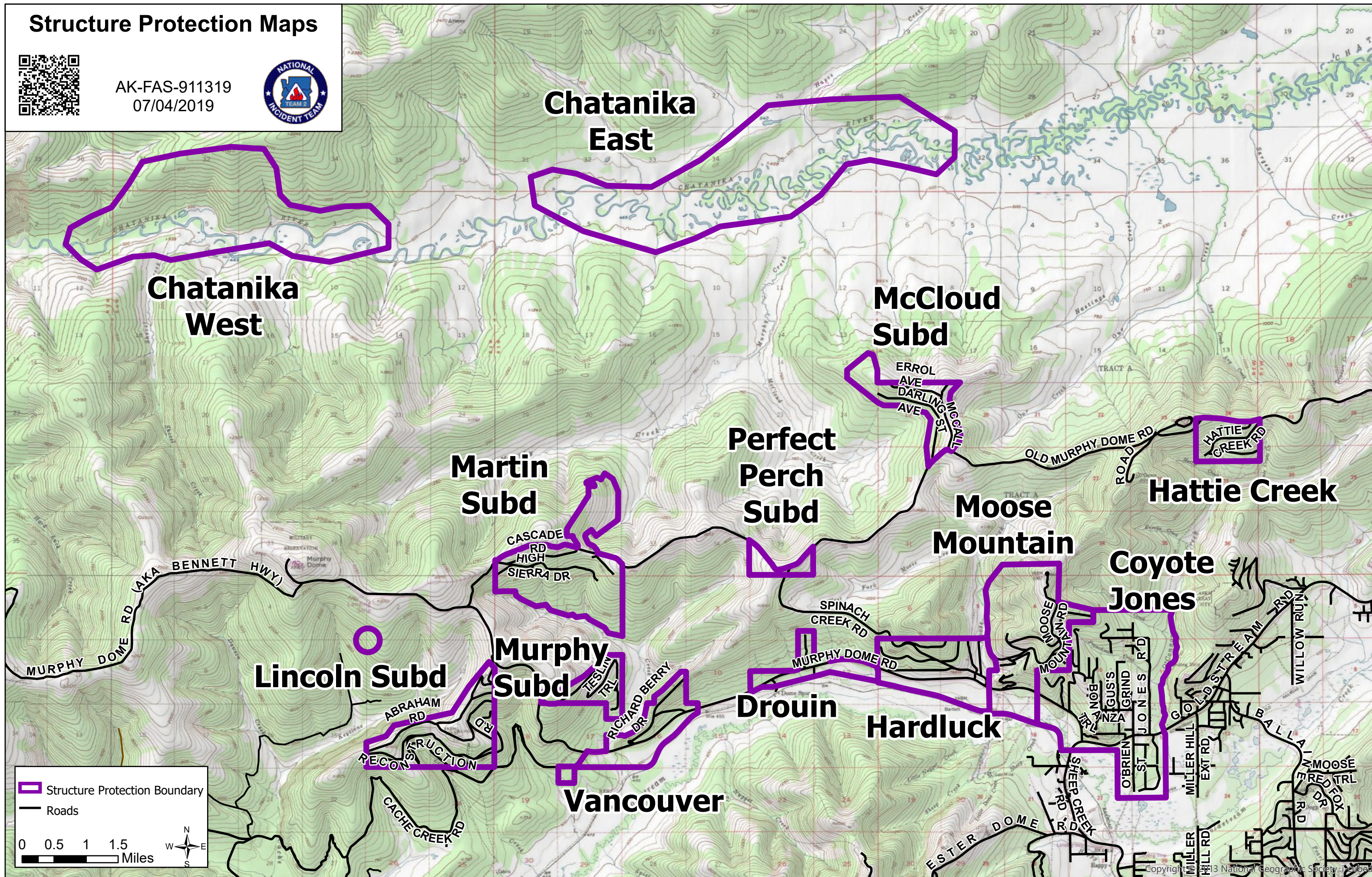


# Structure Protection Maps



AK-FAS-911319  
07/04/2019



**Chatanika  
East**

**Chatanika  
West**

**McCloud  
Subd**

**Perfect  
Perch  
Subd**

**Moose  
Mountain**

**Hattie Creek**

**Martin  
Subd**

**Coyote  
Jones**

**Lincoln Subd**

**Murphy  
Subd**

**Drouin**

**Hardluck**

**Vancouver**

Structure Protection Boundary

Roads

0 0.5 1 1.5  
Miles



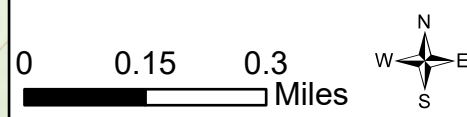
# Structure Protection



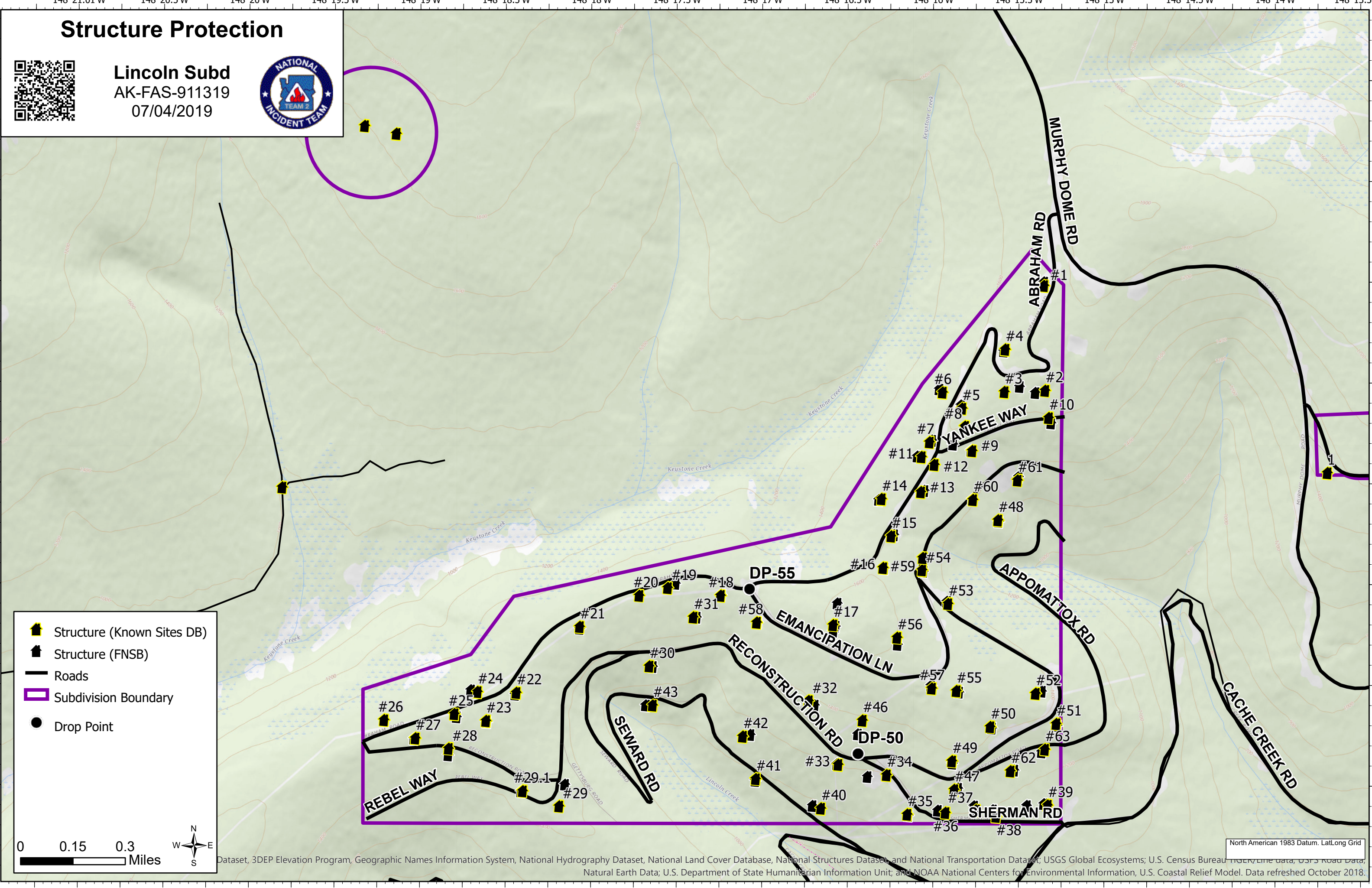
Lincoln Subd  
AK-FAS-911319  
07/04/2019



- Structure (Known Sites DB)
- Structure (FNSB)
- Roads
- Subdivision Boundary
- Drop Point



North American 1983 Datum, Lat/Long Grid  
Dataset, 3DEP Elevation Program, Geographic Names Information System, National Hydrography Dataset, National Land Cover Database, National Structures Dataset, and National Transportation Dataset; USGS Global Ecosystems; U.S. Census Bureau TIGER/Line data, USFS Road Data, Natural Earth Data; U.S. Department of State Humanitarian Information Unit; and NOAA National Centers for Environmental Information, U.S. Coastal Relief Model. Data refreshed October 2018.



# Structure Protection



Martin Subd  
AK-FAS-911319  
07/04/2019



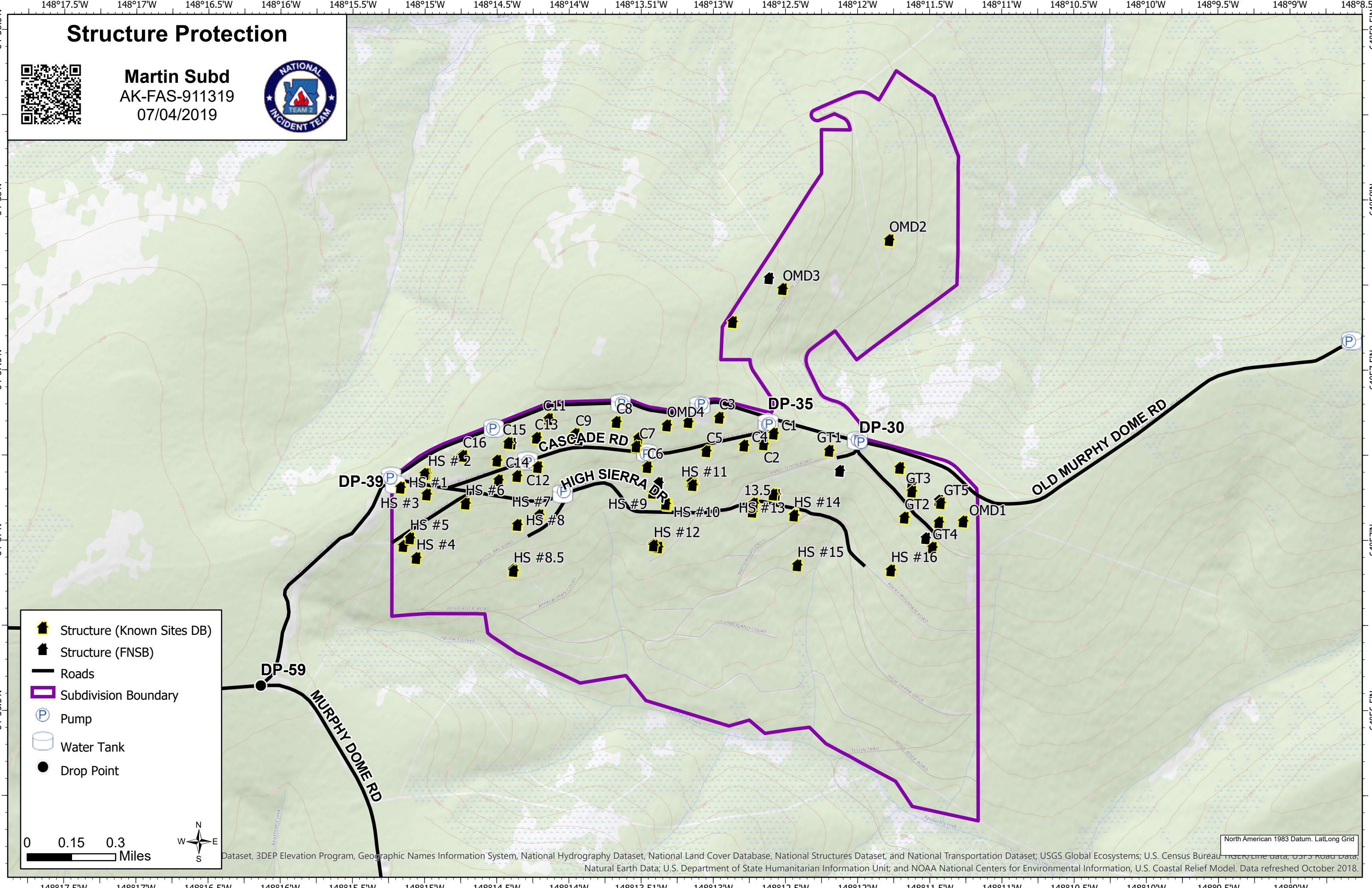
- Structure (Known Sites DB)
- Structure (FNSB)
- Roads
- Subdivision Boundary
- Pump
- Water Tank
- Drop Point

0 0.15 0.3 Miles



Dataset, 3DEP Elevation Program, Geographic Names Information System, National Hydrography Dataset, National Land Cover Database, National Structures Dataset, and National Transportation Dataset; USGS Global Ecosystems; U.S. Census Bureau TIGER/Line data, USFS Road Data, Natural Earth Data; U.S. Department of State Humanitarian Information Unit; and NOAA National Centers for Environmental Information, U.S. Coastal Relief Model. Data refreshed October 2018.

North American 1983 Datum, Lat/Long Grid



# Structure Protection



**McCloud Subd**  
AK-FAS-911319  
07/04/2019



38

37

35

32

29

36

34

ERROL AVE

31

30

17

16

13

12

PAUL RD

8

27

15

14

11

DARLING AVE

7

6

15

14

10

9

7

5

25

15

14

11

9

7

5

25

15

14

11

9

7

5

25

15

14

11

9

7

5

25

15

14

11

9

7

5

25

15

14

11

9

7

5

25

15

14

11

9

7

5

25

15

14

11

9

7

5

25

15

14

11

9

7

5

25

15

14

11

9

7

5

25

15

14

11

9

7

5

25

15

14

11

9

7

5

25

15

14

11

9

7

5

25

15

14

11

9

7

5

25

15

14

11

9

7

5

25

15

14

11

9

7

5

25

15

14

11

9

7

5

25

15

14

11

9

7

5

25

15

14

11

9

7

5

25

15

14

11

9

7

5

25

15

14

11

9

7

5

25

15

14

11

9

7

5

25

15

14

11

9

7

5

25

15

14

11

9

7

5

25

15

14

11

9

7

5

25

15

14

11

9

7

5

25

15

14

11

9

7

5

25

15

14

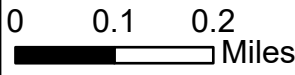
11

9

7

5

25



Dataset, 3DEP Elevation Program, Geographic Names Information System, National Hydrography Dataset, National Land Cover Database, National Structures Dataset, and National Transportation Dataset; USGS Global Ecosystems; U.S. Census Bureau TIGER/Line data, USFS Road Data, Natural Earth Data; U.S. Department of State Humanitarian Information Unit; and NOAA National Centers for Environmental Information, U.S. Coastal Relief Model. Data refreshed October 2018.

North American 1983 Datum, Lat/Long Grid

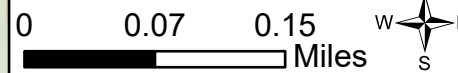
# Structure Protection



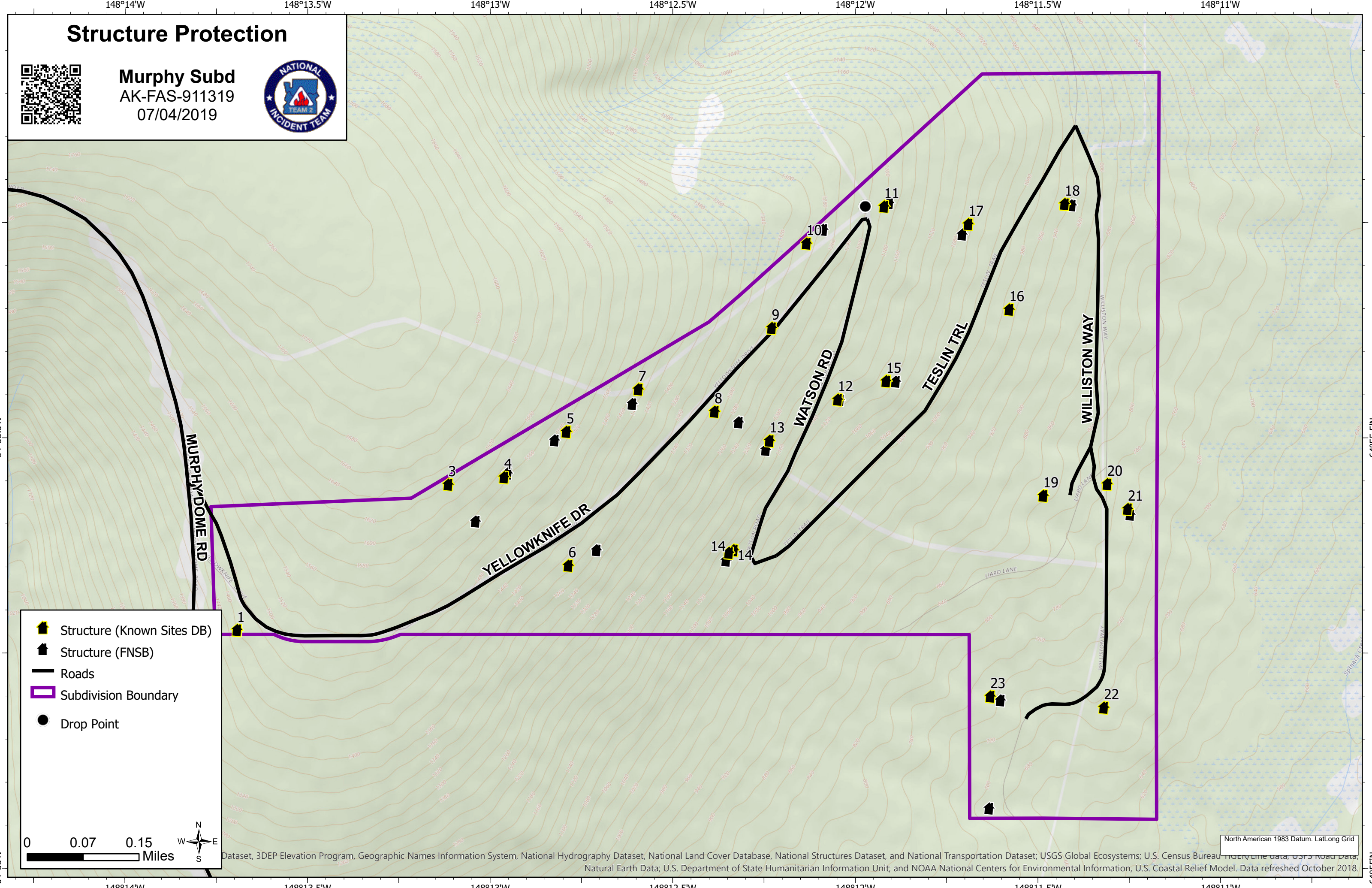
Murphy Subd  
AK-FAS-911319  
07/04/2019



- Structure (Known Sites DB)
- Structure (FNSB)
- Roads
- Subdivision Boundary
- Drop Point



North American 1983 Datum, Lat/Long Grid  
Dataset, 3DEP Elevation Program, Geographic Names Information System, National Hydrography Dataset, National Land Cover Database, National Structures Dataset, and National Transportation Dataset; USGS Global Ecosystems; U.S. Census Bureau TIGER/Line data, USFS Road Data, Natural Earth Data; U.S. Department of State Humanitarian Information Unit; and NOAA National Centers for Environmental Information, U.S. Coastal Relief Model. Data refreshed October 2018.



# Structure Protection



**Perfect Perch Subd**  
AK-FAS-911319  
07/04/2019



- Structure (Known Sites DB)
- Structure (FNSB)
- Roads
- Subdivision Boundary
- Pump
- Water Tank
- Drop Point

0 0.04 0.09 Miles



Dataset, 3DEP Elevation Program, Geographic Names Information System, National Hydrography Dataset, National Land Cover Database, National Structures Dataset, and National Transportation Dataset; USGS Global Ecosystems; U.S. Census Bureau TIGER/Line data, USFS Road Data, Natural Earth Data; U.S. Department of State Humanitarian Information Unit; and NOAA National Centers for Environmental Information, U.S. Coastal Relief Model. Data refreshed October 2018.

