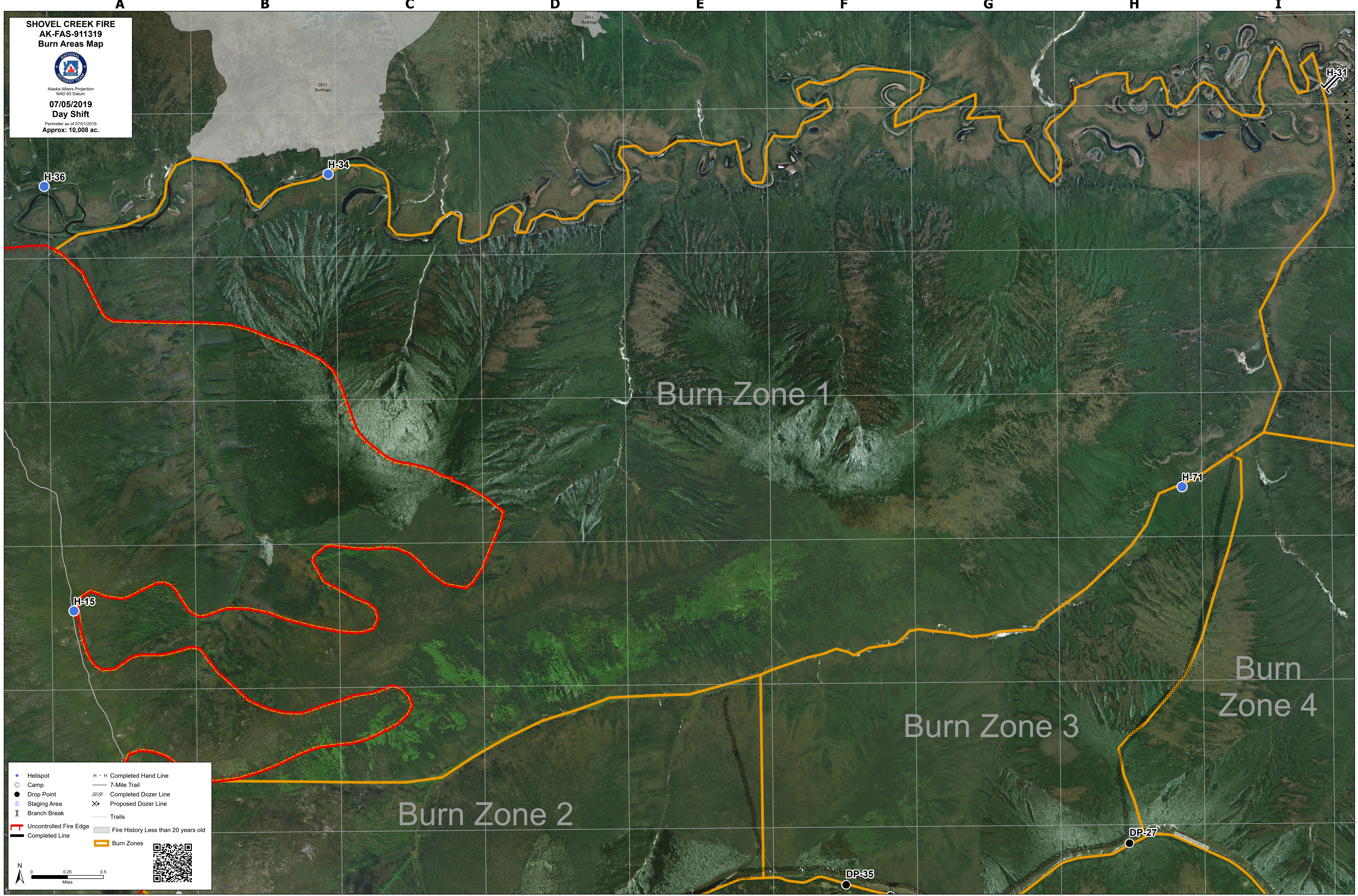


**SHOVEL CREEK FIRE
AK-FAS-911319
Burn Areas Map**



Alaska Albers Projection
NAD 83 Datum
07/05/2019
Day Shift
Perimeter as of 07/01/2019
Approx: 10,008 ac.



Burn Zone 1

Burn Zone 2

Burn Zone 3

Burn Zone 4

• Helispot	H · H Completed Hand Line
○ Camp	— 7-Mile Trail
● Drop Point	⊗ Completed Dozer Line
⊙ Staging Area	⊗ Proposed Dozer Line
⊥ Branch Break	⋯ Trails
— Uncontrolled Fire Edge	■ Fire History Less than 20 years old
— Completed Line	— Burn Zones

0 0.25 0.5 Miles

H-31

2011
Hastings

2011
Hastings

DP-27

DP-35